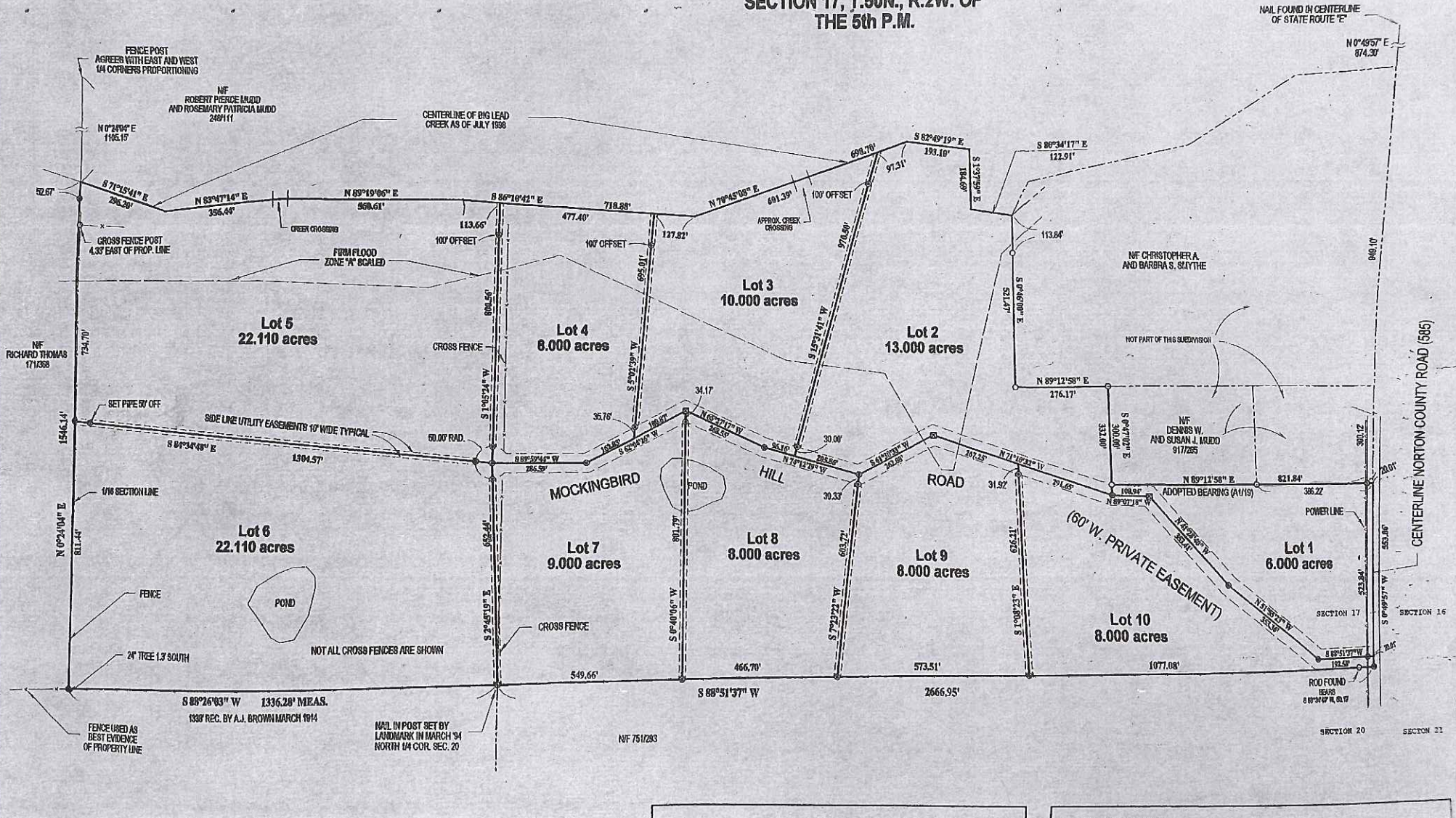


THE OUT-BOUNDARY SURVEY IS RECORDED UNDER SLIDE A127, P81 278A IN THE LINCOLN COUNTY RECORDERS OFFICE.

SECTION 17, T.50N., R.2W. OF THE 5th P.M.



NAIL FOUND IN CENTERLINE OF STATE ROUTE 2

N 0°49'57" E 874.30'

FENCE POST AGREE WITH EAST AND WEST 1/4 CORNERS PROPORTIONING
NF ROBERT PIERCE BAIRD AND ROSEMARY PATRICIA BAIRD 249111

CENTERLINE OF BIG LEAD CREEK AS OF JULY 1998

Lot 5
22.110 acres

Lot 4
8.000 acres

Lot 3
10.000 acres

Lot 2
13.000 acres

NF CHRISTOPHER A. AND BARBARA S. SMYTHE

NF RICHARD THOMAS 171358

Lot 6
22.110 acres

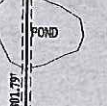
Lot 7
9.000 acres

Lot 8
8.000 acres

Lot 9
8.000 acres

Lot 1
6.000 acres

NF DENNIS W. AND SUSAN J. BAIRD 917285



S 88°26'03" W 1336.28' MEAS.
1338' REC. BY A.J. BROWN MARCH 1914

NAIL IN POST SET BY LANDMARK IN MARCH '94 NORTH 1/4 COR. SEC. 20

NF 7517283

SECTION 20

SECTION 21

CENTERLINE NORTON COUNTY ROAD (365)

FENCE USED AS BEST EVIDENCE OF PROPERTY LINE

NOT ALL CROSS FENCES ARE SHOWN

FENCE

2" TREE 1.3' SOUTH

1/16 SECTION LINE

SET PIPER OFF

CROSS FENCE POST 4.33' EAST OF PROP. LINE

N 0°24'04" E 1105.15'

S 71°15'41" E 206.26'

N 63°47'14" E 395.44'

N 89°19'06" E 568.61'

S 86°10'42" E 477.40'

718.88'

N 70°45'08" E 601.33'

S 82°49'19" E 193.10'

S 86°34'17" E 122.91'

N 89°12'58" E 276.17'

N 89°11'58" E 821.84'

N 71°16'24" E 391.45'

S 61°20'35" W 343.09'

S 72°22'22" W 605.72'

S 64°00'06" W 800.27'

S 74°45'19" E 552.44'

N 0°24'04" E 811.44'

1546.14'

734.70'

52.67'

113.66'

477.40'

718.88'

601.33'

193.10'

122.91'

276.17'

821.84'

391.45'

343.09'

605.72'

800.27'

552.44'

811.44'

1546.14'

734.70'

52.67'

113.66'

477.40'

718.88'

601.33'

193.10'

122.91'

276.17'

821.84'

391.45'

343.09'

605.72'

800.27'

552.44'

811.44'

1546.14'

734.70'

52.67'

113.66'

477.40'

718.88'

601.33'

193.10'

122.91'

276.17'

821.84'

391.45'

343.09'

605.72'

800.27'

552.44'

811.44'

1546.14'

734.70'

52.67'

113.66'

477.40'

718.88'

601.33'

193.10'

122.91'

276.17'

821.84'

391.45'

343.09'

605.72'

800.27'

552.44'

811.44'

1546.14'

734.70'

52.67'

113.66'

477.40'

718.88'

601.33'

193.10'

122.91'

276.17'

821.84'

391.45'

343.09'

605.72'

800.27'

552.44'

811.44'

1546.14'

734.70'

52.67'

113.66'

477.40'

718.88'

601.33'

193.10'

122.91'

276.17'

821.84'

391.45'

343.09'

605.72'

800.27'

552.44'

811.44'

1546.14'

734.70'

52.67'

113.66'

477.40'

718.88'

601.33'

193.10'

122.91'

276.17'

821.84'

391.45'

343.09'

605.72'

800.27'

552.44'

811.44'

1546.14'

734.70'

52.67'

113.66'

477.40'

718.88'

601.33'

193.10'

122.91'

276.17'

821.84'

391.45'

343.09'

605.72'

800.27'

552.44'

811.44'

1546.14'

734.70'

52.67'

113.66'

477.40'

718.88'

601.33'

193.10'

122.91'

276.17'

821.84'

391.45'

343.09'

605.72'

800.27'

552.44'

811.44'

1546.14'

734.70'

52.67'

113.66'

477.40'

718.88'

601.33'

193.10'

122.91'

276.17'

821.84'

391.45'

343.09'

605.72'

800.27'

552.44'

811.44'

1546.14'

734.70'

52.67'

113.66'

477.40'

718.88'

601.33'

193.10'

122.91'

276.17'

821.84'

391.45'

343.09'

605.72'

800.27'

552.44'

811.44'

1546.14'

734.70'

52.67'

113.66'

477.40'

718.88'

601.33'

193.10'

122.91'

276.17'

821.84'

391.45'

343.09'

605.72'

800.27'

552.44'

811.44'

1546.14'

734.70'

52.67'

113.66'

477.40'

718.88'

601.33'

193.10'

122.91'

276.17'

821.84'

391.45'

343.09'

605.72'

800.27'

552.44'

811.44'

1546.14'

734.70'

52.67'

113.66'

477.40'

718.88'

601.33'

193.10'

122.91'

276.17'

821.84'

391.45'

343.09'

Lincoln County, MO



Legend

- Road
 - US Highway
 - State Highway
- + Railroad
- Address Point
- Parcel Number/Acres
- Corporate Limit Line
- Land Hook
- Subdivision
- Right-of-Way
- Building on Leased Land
- Section
- County Boundary

Notes

This map is a user generated static output from an Internet mapping site and is for reference only. Data layers that appear on this map may or may not be accurate, current, or otherwise reliable.
 THIS MAP IS NOT TO BE USED FOR NAVIGATION