

**HOUSEHOLD & MISC**



Whirlpool refrigerator, white



Kenmore chest type, deep freeze, approx. 15 cu. ft.



Oak, dining room table w/6 chairs & matching hutch, very nice set



Round oak table, pedestal type w/claw feet, repo



Massive, 2 door chest w/matching oversize dresser w/mirrored & storage top, nice pc.

- Sofa
- 4 bar stools
- Wheel chair
- Floor rugs



Glass top, patio table, 4 chairs & umbrella, nice set

- 2 bookshelves
- New Presto 16 qt. pressure canner
- Lot Christmas décor
- Lot pictures, frames, wall mirrors
- Log cabin cast iron
- 2 white utility cabinets
- Lot canning jars
- 3 pc Red Cast cooking pans
- Lot pots, pans, bake ware

- Maytag Legacy Series, automatic washer & electric dryer, white
- Roper chest type deep freeze, approx. 17 cu. ft.
- Coldspot chest type, deep freeze, old model
- Refrigerator
- Frigidaire, window air conditioner, NIB
- Brown leather, recliner love seat
- 4 oak, pressed & spindle back kitchen chairs
- 32" flat screen TV
- Full size bed, complete
- Hide-a-bed w/matching love seat
- Flour meal grinder
- 3 swivel bar stools
- Gold's Gym, Air Stride Plus treadmill, like new
- 3 pc set, glass top end tables/coffee table
- 1960s Wizard sewing machine
- 3.5 gal. beverage dispenser
- Rubbermaid storage chest
- Ironman inverter
- Crock pots
- Kitchen Aide
- Bread machine
- Lot sewing supplies
- Lot kitchen appliances
- Lamps
- Magnum heater
- LP Bass Pro fish fryer
- LP Bass Pro turkey fryer
- File cabinet
- Farberware
- Flatware
- Microwave
- Partial List

**OWNERS:  
WILLIAM K. & IMOGENE L. MERRY**

**AUCTIONEERS NOTE:** If you are looking for a nice, move in ready home with a wooded, lake front setting and a view of your lake, here it is. Country at its best, wake up to deer in your yard or the sound of an old gobbler, with fishing less than 300' from your deck. Be sure and check this home out. William served in the Air Force and returned home to work in the medical field installing medical equipment. His hobbies are woodworking & carving. Imogene worked as an elder caregiver & loved to sew, great people. Quality sale, super nice firearms collection, motorcycle's like new, good line of household & woodworking tools. See you at the sale. David, Dusty & Bill

**AUCTIONEERS:**



DAVID THORNHILL  
Troy, MO



DUSTY THORNHILL  
Troy, MO



BILL UNSSELL  
Frankford, MO



**Troy Office: 636-366-4206.**  
**For Full Listing, visit**  
**www.thornhillauction.com**



Lunch will be served. All buyers will be photographed. Terms: Cash or Good Check with Current Photo I.D. Out of State Photo I.D.s and Out of State Checks must be accompanied with a Bank Letter of Credit, call for details. We do not accept Cashier Checks. Items sold with no warranty. They stand sold AS IS. Owner & Auction personnel not responsible for accidents day of sale! Announcements made day of sale take precedence over any advertisement!

David Thornhill - 314-393-7241 Dusty Thornhill - 314-393-4726 Bill Unsell - 573-470-0037  
Troy Office: 636-366-4206 For full listing & terms of this auction - www.thornhillauction.com

**THORNHILL AUCTION & REAL ESTATE COMPANY**

Having purchased a home in Blue Eye, MO, we will sell the following Real Estate & Personal Property at Public Auction on:

**WEDNESDAY OCTOBER 11, 2017**  
**BEGINNING AT 9:45 A.M.**

SALE SITE: 16624 Hinterwald Rd; Warrenton, MO 63383

**DIRECTIONS:** Take Hwy 70 to Warrenton Hwy 47 Exit 193, go south on Hwy 47 ¼ mile to left or east on Hwy M, go 2.6 miles to right on Schuetzenground Rd., 2.4 miles to left on Hinterwald Rd. to 3rd home on left.

**OR Take I-70 to Wright City Exit 199, take Hwy F south to right on Hwy M, go 3.8 miles to left on Schuetzenground Rd., go 2.4 miles to left on Hinterwald Rd. to 3rd home on left.**



**OWNERS:  
WILLIAM K. & IMOGENE L. MERRY**

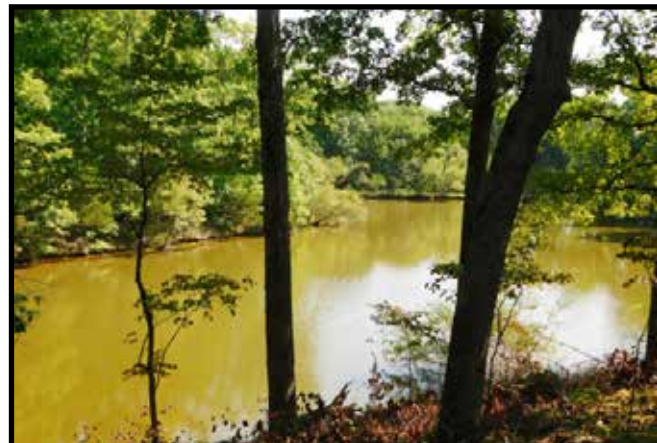
**AUCTIONEERS NOTE:** If you are looking for a nice, move in ready home with a wooded, lake front setting and a view of your lake, here it is. Country at its best, wake up to deer in your yard or the sound of an old gobbler, with fishing less than 300' from your deck. Be sure and check this home out. William served in the Air Force and returned home to work in the medical field installing medical equipment. His hobbies are woodworking & carving. Imogene worked as an elder caregiver & loved to sew, great people. Quality sale, super nice firearms collection, motorcycle's like new, good line of household & woodworking tools. See you at the sale. David, Dusty & Bill

*Celebrating 54 Years In Business*



**REAL ESTATE TO BE OFFERED AT 12:30 P.M.**

Lot 3 Hinterwald – AKA 4.3 acres m/l, Section 1 TWP 46N R 2W in Warren County, Exact Legal to Govern.



**OPEN HOUSE**  
ON THE REAL ESTATE is  
Thurs. Sept. 28, 2017 from  
5:00 – 7:00 P.M. Or by  
appointment

Improvements include a 1 ½ story brick, 4 bedroom 2 ½ bath home w/2 bedrooms & 1 ½ baths on the main level w/living room/dining room combo, kitchen w/breakfast nook and the step down family room w/brick fireplace w/pellet insert is on a concrete slab & has patio doors to a deck. The 2nd level has 2 bedrooms & full bath. The home has hardwood, laminate & tile floors on the main level and carpet on the 2nd level.

The home has a walkout basement w/full bath (3rd full bath), attached 2 car garage & deck.

The home is total electric w/deep well & septic and located in the Warren County School District. Updates include new roof (complete tear off) 30 yr. shingles, new siding on over hang & new garage door opener in 2014.

Beautiful wooded tract, that fronts on a stocked 2 party lake w/catfish, bass & blue gill. Truly a park like setting with mature trees, one of nature's best, as we watched 4 deer in the yard while we were writing up the sale.

Terms: 10% down day of sale with the balance of cash at closing on or before 30 days after the sale with possession at closing.

**MOTORCYCLE & TRAILERS SELL AT 1:00 P.M.**



1980, 16' tandem axle trailer w/ steel bed, ball hitch, ramps & removable sides

2011 Honda Shadow motorcycle, direct drive, water cooled, red w/saddle bags, only 2,700 miles, always garaged, nice

- 1987, 7'x42" wide, utility trailer w/sides, homemade

**RODS – REELS – MISC TACKLE**

**LAWN & GARDEN TOOLS**



Snapper 8 ¼ hp rear tine garden tiller



DeWalt, 3100 PSI power washer

- 2 Stihl chainsaws; 1 – 029 w/20" bar & 1 w/18" bar
- Shovels, rakes, axes, forks, mauls, garden tools, etc.
- FS 80 Stihl weed eater
- Lot splitting wedges
- Hydraulic floor bottle jacks
- Log chains
- Pruners
- Battery charger
- Come along
- Step ladders
- Lot gas cans

**FIREARMS – SCOPES – AMMO – RELOADING SUPPLIES SELL AT 11:00 A.M.**



- Browning Model A500G, 12 ga
- Browning Model A-5, 12 ga, SN B42922
- Remington Model 1100, 12 ga.
- Smith & Wesson M&P 15, 223-556, semi
- Ruger 10/22, stainless, 22 LR, semi
- Remington 750, 30-06 semi
- Ruger Mini-14, 223, semi
- Ruger Mini-14, stainless, 223 semi
- JC Higgins 103229, 22 LR bolt
- Winchester (Pre 64) Ranger SN 5392253, 30-30 lever action
- Winchester (Pre 64), 94 AE, SN 6493497, 30-30 lever action
- Springfield/Armory, M1 Garand, 30-06, semi
- Remington 700 SPS stainless, 300 ultra mag bolt
- Ruger Super Black Hawk, 44 mag, revolver
- Springfield Armory 1911-A1, SN 535953, 45 semi
- Brma lugar, ERMA LA22, German, SN 43828
- Remington 552, 22 LR, semi
- Savage 10, 243 bolt
- BSA 2494, 30-06 bolt
- Browning 300 Win mag, semi
- S&M, Sig MA, SW40VE, 40 semi
- Skyy CPX-1, 9mm
- Colt New Agent w/laser, 44 mm
- CZ 75B stainless, 9mm
- Stoeger Luger, 22 LR
- Taurus Luger stainless, 410/45LC
- Sig Sauer, Whiskey 3, 4-12x50 scope
- Nikon Pro Staff 3-9x40 scope
- Large lot ammo, approx. 30 minutes
- Large lot reloading supplies; dies, press, powder, etc.
- Bows, 1 Robin Hood

**ALL FFL LAWS APPLY. ALL OUT OF STATE FIREARM BUYERS MUST PRESENT A CURRENT FFL LICENSE. NO EXCEPTIONS**

**RED HEAD FLOOR MODEL GUN SAFE SELLS AFTER FIREARMS**



**WOOD INSERT NEW PELLET WOOD INSERT STOVE**



New pellet wood insert

- Lot wood fuel pellets
- Blaze King wood insert, used

**LUMBER**

- 14 pc, 1"x6" rough cut, walnut lumber, stored inside
- Large lot red oak, 1" rough sawn lumber
- Misc, oak, cherry & walnut

**SHOP & WOODWORKING TOOLS**



Woodmaster 12" planer, floor model

- 4400 watt, 8 hp generator
- Craftsman 12" wood lathe
- Delta, floor model band saw
- Craftsman 10" radial arm saw
- Craftsman 4"x36" belt, 6" disk sander, 1/3 hp
- Delta scroll saw, table type
- Craftsman 10" table saw
- Craftsman 30 gal. 5.5 hp portable air compressor
- Cummins electric drill bit sharpener, NIB
- Rixon floor model drill press
- New, 6 drawer tool cabinet
- Makita, electric sharpener, NIB
- 16 gal. shop vac
- Portable air compressor
- Sand blaster
- 12" planer
- Set wood lathe chisels
- Ryobi 8" bench grinder, NIB
- Ridgid orbital jig saw, NIB
- DeWalt HD jig saw, NIB
- 10 pc, T-handle hex key set
- Makita orbital sander
- Makita hammer drill
- Homemade sharpener for wood carving tools
- Lot pipe & grip clamps
- Lot woodworking tools
- Model 6911 Porter Cable router
- DeWalt 3/8" drill in case
- DeWalt orbital sander, NIB
- Cummins 4" disk grinder



8" floor model, Grizzly jointer/planer

- 1/2" drill
- 40 pc, tap/die set
- Router table
- Shaper bits
- Planes
- Brace
- Lot hand saws



Powermatic shaper

- Tool boxes
- B&D drill set
- B&D soldering gun
- Torque wrenches
- Pipe wrenches
- B&D router
- Biscuit cutter
- 3 5/8 craftsman hand planer
- Craftsman 19.2 volt, tool set, NIB
- Lot Craftsman 1/4", 3/8" & 1/2" socket sets, complete
- Deep well sockets
- Husky socket set
- Craftsman power saw
- Porter Cable power saw
- Craftsman storage chest
- Lot biscuits
- Milwaukee saws all
- Hilti rotary hammer w/bits
- Partial List

**ANTIQUES & MISC**

- Victrola, floor model
- Treadle sewing machine
- Oil lamps
- Carnival glass berry bowl set
- Tea pot
- Small crock bowl
- Broad axe & hatchet
- Weed scythe
- Planes
- Buck saw
- Cross cut saw
- 4 oak sewing machine drawers
- Broilers
- Partial List