

HOUSEHOLD & MISC.



Oak roll top desk w/chair

Hearth Stone, wood burning stove

Leather sofa & loveseat w/ matching high back chair

Queen Anne 4 poster full size bed w/Serta bedding complete, dresser & night stand

China cabinet hutch



Head & footboard w/Sealy queen bedding, mirrored dresser, hutch, chest & 2 night stands

Bedroom set, antique head & footboard w/Sealy queen bed, mirrored dresser, chest & night stand

7pc living room set, loveseat, cocktail table w/beveled glass, 2 end tables w/glass, sofa table & matching side chair



Rectangle oak table, 72"x42" w/5 chairs(1 armed)

- King headboard, mirrored hutch, matching mirrored dresser
- Big oak book hutch, 98"Hx74 1/2"Wx15 1/4"D
- Kenmore, window air conditioner 230V, 18,000 BTU
- 2 infrared quartz heaters, 1,500 watt
- Kerosene heater, Dura Heat, like new
- Lots of stainless steel Revere Ware
- Assorted other cook ware
- Assorted pots, pans, skillets
- Lot of assorted house ware
- Lots of prints, some framed
- Lot misc. household
- China cabinet
- Quilt rack
- Corner hutch
- Lamps
- Chairs
- Rocker
- 2 cherry end tables
- Mirrored hall tree
- 2 peacock sofa table lamps
- 2 oriental end table lamps
- Lot comforters & bedding



Dresser w/mirror

BEE EQUIPMENT



Dadant 20 frame radial, like new 8 years old

- Bottom boards
- Pollen trap

- 2 double story hives complete w/bees
- Hive bodies assembled and painted
- Shallow supers assembled and painted
- Kelley plastic molded telescoping covers
- Shallow supers MT drawn comb ready for crop
- Several square & round section comb supers
- Sheets wired brood foundation w/ hooks
- Sheets wired shallow super foundation hooks
- 10 hives stands(wood)
- 10 screened bottom boards
- Unassembled hive bodies
- Unassembled shallow supers
- 3 cases new 16oz. plastic jars
- 6 cases new 40oz. plastic jars
- Hive bodies w/MT drawn combs
- Assortment of cases of new, glass honey jars

AUCTIONEERS:



DAVID THORNHILL
Troy, MO



DUSTY THORNHILL
Troy, MO



BILL UNSSELL
Frankford, MO



Troy Office: 636-366-4206.
For Full Listing, visit
www.thornhillauction.com



Lunch will be served. All buyers will be photographed. Terms: Cash or Good Check with Current Photo I.D. Out of State Photo I.D.s and Out of State Checks must be accompanied with a Bank Letter of Credit, call for details. We do not accept Cashier Checks. Items sold with no warranty. They stand sold AS IS. Owner & Auction personnel not responsible for accidents day of sale! Announcements made day of sale take precedence over any advertisement!
David Thornhill - 314-393-7241 Dusty Thornhill - 314-393-4726 Bill Unsell - 573-470-0037
Troy Office: 636-366-4206 For full listing & terms of this auction - www.thornhillauction.com

THORNHILL AUCTION & REAL ESTATE COMPANY

55th YEAR IN BUSINESS

Having decided to sell my farm and relocate, I will sell all the following at Public Auction on:

SATURDAY MAY 5, 2018
BEGINNING AT 10:00 A.M.

SALE SITE: 20501 Audrain Co. Rd.962; Mexico, MO 65265

DIRECTIONS: From overpass at Hwy 15 and Hwy 54 in Mexico (by Walmart), go west on Hwy 54 2 miles to right on Audrain Co. Rd. 964 (next to Maxwell Trailers) go 1 mile to right on Co. Rd. 917, go 1/4 mile to left on Co. Rd. 962 and go approx. 1/4 mile. Tract #2 starts on the right. From Auxasse MO go east on Hwy 54 5 miles to left on Audrain Co. Rd. 964 (next to Maxwell Trailer Sales) and follow above directions.



Home & 47 acres m/l
Audrain County



OWNER:
GARY MCGUIRE

AUCTIONEERS NOTE: What a neat homestead. Gary keeps a very nice home, everything is very neat and clean. The 4 wheeler is like new along with a nice selection of shop tools and wood cutting equipment. If you are in the market for a nice homestead in the country with a great location, here it is. See you at the sale. David, Dusty & Bill

Celebrating 55 Years In Business

REAL ESTATE TO BE OFFERED AT 1:00 P.M.

TRACT #1: 17 acres m/l in Section 21 TWP50N R 9W in Audrain County.



NOTE: Due to the law on lead based paint & lead based paint hazards on any home built prior to 1978, any inspections for lead base paint by a purchaser must be done 10 days prior to the auction. Buyers will be given an EPA pamphlet & will be required to sign a disclosure acknowledging that you were given the information.

Improvements include a 1 1/2 story farm house w/4 bedrooms(2 on 2nd floor), 2 full baths, kitchen, living room, family room and utility room. The house has a FA propane furnace w/central and flue for wood stove. Is on public water w/septic. Updates on the home on the home approx. 10 years ago; central air, thermo windows, added insulation in attic and metal roof on the garage. The home has an oversize attached 2 car garage w/overhead doors, metal roof and siding w/partial cultural stone front and large covered front porch. Other improvements include a 24'x24' metal storage shed w/roll up door electric and 17ft. lean to, a 12'x24' storage shed & garage, a 24'x32' metal storage shed(RV type) and a 12'x16' storage shed w/floor & electric. This is a nice tract that lays nice, approx. 15 acres in hay or pasture, nice natural lake site. Co. Rd. dead ends at the home, big garden area, lots of deer signs, no restrictions, great country retreat or place for your horses, chickens and pets.

TRACT #2: 30 acres m/l lays north of TRACT #1. Approx. 25 acres in hay, could be farmed.



No improvements, county water and electric available. Fronts Co. Rd. 962, very nice add on tract, home sites, or hay or tillable tract, all kinds of deer signs and only minutes to Hwy 54 & Mexico.

OPEN HOUSE ON THE REAL ESTATE is Thursday April 19th, 2018 from 5:00 to 7:00 P.M. or by appointment. Call David or Dusty at 636-366-4206

Terms: 10% down day of sale with the balance of cash at closing on or before 30 days after the sale with possession at closing.

NOTE: Gary's mom and dad bought this farm in 1970 and it has been in their family since.

ORGAN



Gulbransen series 600 w/magic touch, w/ bench seat, organ dimensions 55"X44"X30"

FARM EQUIPMENT

- Heavy Duty Massey 14", 2 bottom plow, nice
- Older 5' House brush hog, rough but works
- Old John Deere lawn tractor snow blade, SN 9659 Model 42, 42"
- Old Massey Ferguson lawn tractor snow blower attachment
- 3 aluminum contractors scaffolds; 2 - 30'x2', 1 - 32'x2'
- 14 hp Craftsman 38" cut, riding mower, not running
- Round, galvanized stock tank, 6 1/2'x2'
- Oblong, galvanized stock tank w/heater, 4'x2'
- Old 6 hp reel mower w/sulky
- 3.8 hp Murray push mower
- 5' Caroni finish mower, 3 pt
- 250 gal. water tank, plastic
- Older 6' blade, 3 pt
- Farm gates
- Lot used T post

RECREATION

- Trek 1100 road bike, 21 speed, red, excellent

4 WHEELER, TRAILERS & WAGON SELL AT 12:30 P.M.



2005 Honda TRX650 4 wheeler, 4x4 electric or automatic shift, GPS system, dealer installed Warn Winch, 231.7 hrs, excellent condition, red

- 3' Moose 4 wheeler snow blade
- ATV front & rear cargo baskets, new in box
- ATV mount seeder/spreader, electric
- Aluminum, 4 wheeler ramps
- Cyber, full face, motorcycle helmet, like new, large

- 11'X49" light duty homemade trailer w/ramps, holds 2 4 wheelers, removable sides, w/title
- Craftsman garden 2 wheel dumpcart
- Rubber tired chuck wagon, as is



12'x6 1/2' farm wagon, pin hitch, lights wired for road use(hayride wagon), 4 prong

MACHINIST/TOOLMAKER PRECISION TOOLS

- Starrett Last Word dial indicator in cushioned case, .0005" graduations, .030 travel
- Starrett stainless steel radius gage set w/holder in case, 1/64" - 1/2"
- Starrett No. S154L, adjustable parallels, set of six w/case
- Starrett planer gage w/1", 2" & 3" extensions in mahogany wood case
- Starrett 0-8" depth mic. w/4" base; 1", 2", 3", 4", 5", 6", 7", 8" standards in 2 mahogany wood cases
- Mitutoyo 1-2" outside mic. ratchet handle
- Telescoping gages, Starrett; 4 gages .1" - .375" in plastic Lufkin case
- Yvasa magnetic base
- Ingersoll Rand air die grinder kit in plastic case, Model 307-A, 27,000 RPM, new
- General stainless steel angle gage 0°/180°

LAWN & GARDEN

- Stihl hedge shears 22", model HS46CE
- 4 1/2' aluminum glider, old, rough
- 40" wrought iron porch glider w/frame - 5 concrete bird baths
- 6' wrought iron oblong patio table w/glass top, umbrella and 6 chairs
- Stainless Charbroil 5 burner grill, propane tank
- Wrought iron 24" patio table & 2 chairs
- Hebe figurine fountain, 38" bowl w/ pump available
- Concrete buck/doe lawn ornaments, light damage

SHOP TOOLS & MISC

- 14 assorted antique wrenches: Craftsman, Walden-Worchester, Westline
- 26 pc. Craftsman wrench set, chrome, 5/32" - 1 1/8", like new
- 16 pc. Craftsman wrench set, chrome, metric, 7mm - 22mm, like new
- Compressed air hoses, 200 PSI, 50', 1 new; 600 PSI, 50' used
- Craftsman 8", 1.0 hp, bench grinder w/stand
- DeWalt 12V drill w/case, need batteries
- King 3/4 hp, 6" bench grinder, new in box
- Werner 24' extension ladder, fiber glass
- Reddy Heater, 30,000 BTU, electric
- Assorted other old wrenches
- Craftsman 84T 1/2" ratchet, new
- 3/4" twist clevis, 1" twist clevis
- Heavy duty, steel shelving, 2 - 83"x49"x23", 1 - 83"x37"x18"
- Assorted shovels, rakes, lawn & garden tools, water hoses, planting bar
- Misc. oil, anti freeze, hydraulic fluids, funnels
- 30' 14/2 underground cable
- Skil 16" scroll saw
- Craftsman 10 gal. air tank
- 3/8"X14' tow chains, 2
- Misc. extension cords
- 2 Impact lawn sprinklers
- 12' step ladder
- T post puller

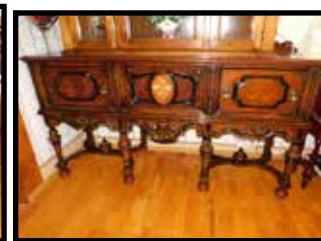
PHOTOGRAPHY

- Olympus OM-1N, 35MM body
- Olympus OM-10, 35MM body
- Olympus OM-2N, 35MM body
- Vivitar 80-200 tele./zoom w/macro
- Vivitar 400MM tele. lens
- Zuiko 35-70MM zoom lens
- Zuiko 28MM wide angle lens
- Zuiko 55MM lens
- Aubell 135MM portrait lens
- Vivitar 283 flash
- Quantum battery 1+, flash battery
- Vivitar 283 flash
- Nice hard storage case

ANTIQUES & COLLECTIBLES



1940's art deco 62"x42" dining room table(w/inlaid wood motif in table & 4 chairs) w/matching china cabinet & buffet



Upholstered rocker



Cedar chest



3 piece oak parlor set, cane back, love seat & 2 chairs(1 high back)



Dinner bell, 18" w/#3 yoke dated 1886



Assorted antique chairs



Carved tea table w/marble top



1940's art deco vanity w/mirror



BS Aires chiffonier mirrored 3 door wardrobe, super piece

- Corner table
- Milk cans
- Partial list

WOOD SPLITTER - CHAINSAWS & FIREWOOD



Buchheit 22 ton log splitter, vertical/horizontal, excellent

- Stihl chainsaw, MS250 w/16" bar
- Stihl chainsaw, MS290 w/20" bar
- Poulan chainsaw, 16" bar
- Stihl axe
- Stihl hatchet
- Old axes
- 1 antique axe
- 1 maul splitter
- 1 steel wedge
- Approx. 2 cords split seasoned hardwood, oak & locust

ARCHERY

- Collectable Browning Nomad Wood Riser compound bow w/ quiver and 33" aluminum arrows w/ field points