

SATURDAY OCTOBER 17, 2020

BEGINNING AT 9:30 A.M.



OWNERS:

LATE HAROLD & MARJORIE SUDBRACK

LEONARD & ROGER SUDBRACK, WANDA SCHELLERT & CONNIE MITTLER

AUCTIONEERS NOTE: Harold and Marjorie were married in 1949 and moved to the farm in 1952 and have never had a sale. This is truly a lifetime collection. They were members of the St. Paul Lutheran Church in New Melle. Harold worked at MFA as a store manager and Wheel Horse dealer/small engine mechanic and retired from Cuivre River Electric Coop. Marjorie was a hardworking farm wife who helped in the fields and raised a large garden every year. The Sudbrock's worked hard for what they have. This is a real nice, clean line of farm equipment, along with Harold's toy tractor collection. Everything is very neat and clean. See you at the sale. David, Dusty & Bill
Note: We will be selling in 2 rings part of the day, come prepared.

AUCTIONEERS:



DAVID THORNHILL
Troy, MO



DUSTY THORNHILL
Troy, MO



BILL UNSELL
Frankford, MO



Troy Office: 636-366-4206.

For Full Listing, visit

www.thornhillauction.com



Lunch will be served. All buyers will be photographed. Terms: Cash or Good Check with Current Photo I.D. Out of State Photo I.D.s and Out of State Checks must be accompanied with a Bank Letter of Credit, call for details. We do not accept Cashier Checks. Items sold with no warranty. They stand sold AS IS. Owner & Auction personnel not responsible for accidents day of sale! Announcements made day of sale take precedence over any advertisement!
David Thornhill - 314-393-7241 Dusty Thornhill - 314-393-4726 Bill Unsell - 573-470-0037
Troy Office: 636-366-4206 For full listing & terms of this auction - www.thornhillauction.com

THORNHILL AUCTION

57th YEAR IN BUSINESS

& REAL ESTATE COMPANY

We will sell the following Personal Property of the Late Harold & Marjorie Sudbrock at Public Auction on:

SATURDAY OCTOBER 17, 2020

BEGINNING AT 9:30 A.M.

SALE SITE: 50 Foristell Rd.; New Melle, MO 63385

DIRECTIONS: Take I-70 to Wentzville/Hwy Z Exit 209, go south on Hwy Z to right on Foristell Rd. to 1st home on left OR from New Melle, go north on Hwy Z approx. 1 mile to left on Foristell Rd to 1st home on left.



OWNERS:

LATE HAROLD & MARJORIE SUDBRACK

LEONARD & ROGER SUDBRACK, WANDA SCHELLERT & CONNIE MITTLER

AUCTIONEERS NOTE: Harold and Marjorie were married in 1949 and moved to the farm in 1952 and have never had a sale. This is truly a lifetime collection. They were members of the St. Paul Lutheran Church in New Melle. Harold worked at MFA as a store manager and Wheel Horse dealer/small engine mechanic and retired from Cuivre River Electric Coop. Marjorie was a hardworking farm wife who helped in the fields and raised a large garden every year. The Sudbrock's worked hard for what they have. This is a real nice, clean line of farm equipment, along with Harold's toy tractor collection. Everything is very neat and clean. See you at the sale. David, Dusty & Bill
Note: We will be selling in 2 rings part of the day, come prepared.

Celebrating 57 Years In Business

TRACTORS & FARM EQUIPMENT SELL AT APPROX. 1:30 P.M.



1969 IH Farmall 856 diesel tractor, wide front-end, dual hydraulics, 3pt hitch, power steering, 540 & 1000 PTO, 18.4-38 tires w/hubs, 7,085hrs, SN 26476SY, extra clean (Entered in local tractor show and won Best in Class)



1963 IH Farmall 560 diesel tractor, tri-front end, power steering, 2pt hitch, 15.5-38 tires, sells w/IH front-end hydraulic loader w/scoop & manure bucket, 4,574hrs, super sharp (Note: new pistons, sleeves, etc.; approx. 500hrs)



1955 Massey Harris #30, tri-front, 3pt w/PTO, 12.4-38 tires, SN 12304-30-CR, sharp, parade ready



John Deere 8200, 18-hole grain drill w/drag chains, kept in shed



John Deere 7000, 4-row wide corn planter, no till w/fertilizer boxes, kept in shed, extra clean



John Deere #535 boom sprayer, approx. 350gal, trailer-type, approx. 30' booms



7'x14' Huskee flatbed farm wagon

- John Deere #230, 20' hydraulic fold wheel disk
- John Deere 9-shank, pull-type chisel plow
- IH 2pt sickle mower, good condition
- 6'x12' flatbed farm wagon w/grain sides & hoist
- New Holland #254, 2-basket tedder, 3pt
- Kewanee 9-shank, pull-type chisel plow
- John Deere 3pt, 2-bottom plow, kept in shed
- 8'x5' single-axle trailer w/removeable sides, FFA built
- 3pt, 5' adjustable blade
- John Deere 4-row, 3pt cultivator, rotary tine
- IH 2pt, 4-row cultivator
- Clipper Fanner Mill w/screens & electric motor
- 12' tandem-axle trailer w/ball hitch
- IH #510, 5-bottom semi-mounted plow
- 6'x14' rubber-tired farm wagon w/hoist
- 3pt big bale carrier
- Tri-front for 460-560 tractor
- 2-section John Deere harrow, bar only
- Harrow attachment for John Deere 230 disk
- Set 18.4-38 duals
- 14' Husky farm wagon w/grain sides & hoist (150bu.), kept in shed

BUTCHERING EQUIPMENT SELLS AT 12:00 NOON



110 Biro Model 11 stainless steel, floor-model meat saw, good condition



Toledo meat grinder

- Lard stuffer & press
- Lot butcher tubs
- Butcher knives
- Worktable
- Hand meat saw
- Lot galvanized tubs
- Cube steak tenderizer
- U.S. Slicing Machine Co. meat slicer, single phase, model TO, SN 534 GC490

LAWN & GARDEN EQUIPMENT

- Stihl FS 45-C, 2-cycle weed eater
- 5hp chipper/shredder
- Chore Master garden tiller
- Jonsered chainsaw
- Homelite XL chainsaw
- 2 McCulloch chainsaws
- Roll 48" red top woven wire
- Wheelbarrow
- Lot yard & garden tools
- Aluminum scoop shovel
- Lot garden hoes
- Yard windmill
- Picnic table
- Lot yard décor
- Aluminum 16' extension ladder
- Steel traps
- Misc. fishing tackle, rods, reels
- Lot wire tomato cages
- Misc. push lawn mowers & mower parts

POCKET KNIVES SELL AT 10:00 A.M.
Approx. 20 pocket knives

FIREARMS & GUN CABINET SELL AT 10:00 A.M.



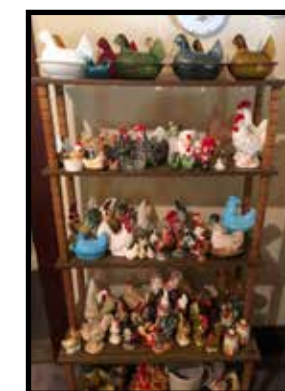
- Ithaca 16ga pump, SN 751286 Z
- Daisy Model 881 BB, .177 cal
- Hann Super Repeater BB rifle
- Daisy Powerline Model 1270, Co2 BB pistol
- 3-gun gun cabinet (Harold made)

ALL FFL LAWS APPLY. ALL OUT OF STATE FIREARM BUYERS MUST PRESENT A CURRENT FFL LICENSE. NO EXCEPTIONS

ARROWHEADS SELL AT 10:00 A.M.
Misc. arrowheads - bird points



LARGE HEN ON NEST & CHICKEN FIGURINES COLLECTION



**ANTIQU PEDAL TRACTORS
SELL AT 11:00 A.M.**



John Deere A pedal tractor & 1951 IH Small H pedal tractor (This was Leonard's when he was a boy)

TOY TRUCKS & TONKA TOYS SELL AT 11:00 A.M.



1/16 scale signed Joseph ERTL 1884, #47 steam engine

- Hwy 61 series 1/16 scale C-65, 1975 farm truck w/box (has custom grain bed handmade by Harold)
- Hwy 61 series 1941 Chevrolet farm truck w/box (has custom grain bed handmade by Harold)
- Tonka dirt shovel
- Tonka dump truck
- Lot cast iron cars
- Lot misc. farm implements
- Lot plastic model cars
- Model cars: Joker, Sting Ray, Etc.

GRAIN TRUCK SELLS AT 1:30 P.M.



1973 Ford F-350 custom 1-ton truck w/12' combination bed & hoist, 360-4 speed, 72,595 miles, extra clean, red

- Set new fenders for '73 Ford truck

FARM SUPPLIES

- Rubber-tired portable loading chute
- Hydraulic cylinders: IH & John Deere
- Misc. lumber: lot 2x4's, some walnut
- IH tractor weights
- Lot misc. IH parts
- Hand post hole digger
- Chicken waterers
- Lot tires & rims
- Mauls
- Wagon jack
- Feed trough
- Hog panels
- Hay feeder
- Lot clevis'
- Log chains

GRAIN BIN SELLS AT 2:00 P.M.

- 3-ring Butler, approx. 1000bu. grain bin, to be moved

**TRACTOR, TRUCKS & FARM TOY COLLECTION
SELLS AT 11:00 A.M.**

John Deere - 16th scale 4020 power shift precision - John Deere 70 precision - John Deere 4255 - John Deere 4230 - John Deere 7600 - John Deere Hit & Miss - John Deere 4040 - IH Farmall 460 precision - Farmall High Clearance 100 Farmall F-20 - IH 786 - Precision Farmall H - F-20 Precision - IH 966 - IH 656 - IH 404 - IH 606 - IH 5088 - IH 1586 - Farmall Super MTA - Farmall 560 diesel precision - McCormick Deering Hit & Miss - IH disk - Ford - TW20 - 8-N - Case 930 precision - Massey 44 - IH 340 precision w/3-bottom plow - Oliver 1855, White 185 - Case 8465 round baler - Case 7140 - MF 1100 - AC 190 - AC D19



**1-8TH SCALE TOYS SELL AT 11:00 A.M.
Farmall H - John Deere B - Farmall 806**



COLLECTION OF JOHN DEERE FARMER PLATES

**2-HORSE, HITCH BOX BED HIGH WHEEL WAGON,
ST. LOUIS FARM SHOW**

**FLAT-BOTTOM JON BOAT, NO TITLE
SELLS AT 12:00 NOON**

CIGARETTE LIGHTER COLLECTION

GOOD PLATFORM SCALE

SHOP TOOLS



Black & Decker 11/16" Super Service valve refacer, nice



Columbian Vise Co. small anvil

- Portable air compressor
- Miracle Handi anvil
- Retractable shop light
- Mouse sander/polisher kit
- Twentieth Century arc welder
- Ace tap & dies threading tool set
- Craftsman 5 1/2" bench vise
- Bryant hanging gas furnace
- Lot power tools: drills, saws, etc.
- Duracraft 16-speed, floor-model drill press
- Lot welding clamps
- Lot pipe wrenches
- Lot bolts, hardware
- Wood lathe
- Pullers
- Body tools
- Lot wrenches
- Tin snips
- Lot C clamps
- Bolt cutter
- Lot files

**WHEEL HORSE LAWN TRACTORS
SELL AT 12:00 NOON**



Early 1970's Wheel Horse C-100, 8-speed, 10hp riding lawn tractor w/deck, parade ready



David Bradley plow

- 1967 Wheel Horse, 6-speed, 10hp riding lawn tractor, bought new w/42" deck, super clean
- Kohler engine, approx. 9hp, rebuilt for Wheel Horse tractor
- Wheel Horse drag harrow
- Kohler block
- Misc. Wheel Horse parts: hood, fender, seat, etc.

**32"X60" BOX BED FARM WAGON, HANDMADE BY HAROLD,
NEAT PC.**



ANTIQUES & COLLECTIBLES

- 2 waterfall pattern bedroom sets: 2 beds, 2 wardrobe dressers, dresser w/mirror, vanity w/mirror, nightstand

- Cavalier cedar chest
- Primitive drop-leaf table
- Walnut parlor lamp table
- Oak 2-door wardrobe
- Oak slat-back rocker
- Oak kitchen table
- 3pc McCoy: coffee, sugar, creamer
- Library table
- Farm Master chicken brooder
- Set Homer Laughlin (oriental) china
- Knicks Mend Rite 30¢ patch container
- Rooster repo farm bell
- Min-O-Life minnow bucket
- House wooden windows
- Grindstone on stand
- Child's sled
- Character glasses
- Galvanized washtubs & buckets
- Little Lady 21pc, toy china tea set
- AMT Hot Trucks skill level 2 in box
- Radio
- Anheuser Busch horse hitch & wagon picture in frame

- Lot keys
- Little Debbie doll in box
- Tea pots
- Brass horse clock
- Apple peeler
- Retro lamps
- Lot 33 records
- World globe
- Cameras
- Guitar
- Busy Bee candy tin
- Modern Tone carnival glass
- Lot figurines
- Blue swirl dish pan
- Lot glass chicken waterer
- Wizard 4-blade fan
- Cast iron skillets
- Water cooler
- Sugar jar
- Granite pans & canners



Early cast iron dog bank

- Lot 1-4gal stone jars
- Washhouse stove
- Primitive round table
- 1950's metal lawn chairs
- Lot quilt tops
- Lot doilies
- Farmhouse table
- Christmas ornaments
- Stag glasses
- Correlle dishes
- Lot Playboy model pinups
- Lot Playboy magazines
- Ovenware pottery
- Dover Doily sad iron
- 1950's utility step stool
- Oil lamps
- Toy cookstove
- Lot tobacco tins
- Stillard & T's
- Lady car hood ornament
- Hand corn sheller
- Farmyard gate
- Copper wash boiler
- Child's wagon
- 6-volt fog lights
- RR wrenches
- Misc. tools
- Child's highchair
- License plates
- Cast iron kettle
- Cross-cut saws
- Wooden boxes
- Chicken coop
- Buck saw
- Wood plane



Art Deco ashtray, floor-type



18"x2 1/4" mill stone

ADVERTISING & ST. CHARLES CO. MEMORABILIA



1953 ALL NEW Chevrolet (A Preview of You) dealer's catalog

- Harold Sudbrock MFA Member porcelain sign
- Leible & Sons ornamental iron Wentzville advertising thermometer
- National Petroleum Wentzville advertising thermometer
- Blair Feed & Grain, New Melle Mo. advertising thermometer
- Flying Dutchman manure spreader, Moline Plow Repair manual
- Fairbanks-Morse Engines #80H
- Mueller Drugs Wentzville 1945 farm animals book
- Chas F.E. Meier, The Barn Yard Doctor book
- 1868-1963 Watkins almanac
- John Deere Moline ILL Soil Fertilizer book
- GMC 1957 Pickup book
- 2, Kelly Tire ashtrays

COINS & CURRENCY SELL AT 10:30 A.M.

- 1957 blue seal silver certificate
- 1976 \$2 bill
- 2, 1935 A blue seal silver certificates
- 6 Morgan silver dollars: 1921, 1923, 1924 & 1926
- 20, 1972 Eisenhower dollars
- 12 Buffalo nickels: 1 stamped #4
- V nickels: 1883, 1899, 1905 & 1906
- Mercury dimes: 1936-1937
- Indian head pennies: 1886, 1881, 1895, 1900
- Lot Wheat pennies
- Lot D mint pennies
- 10, 1943 steel pennies
- 1858 Seated Liberty quarter
- 1831 large cent
- 1865 2¢ piece
- 1857 1¢ Flying Eagle
- Franklin 1/2 dollars: 1957 & 1961
- Walking Liberty: 1938, 1940 & 1941 D
- 28, Kennedy 1/2 dollars, 40% silver
- Lot 1970's Kennedy 1/2 dollars
- 4, 1964 Kennedy 1/2 silver dollars

MINIATURE OIL LAMP COLLECTION, APPROX. 30

HOSPITAL BED, STRYKER

HOUSEHOLD & MISC.



2012 Empire LP heating stove, bought new from Hechler Hearth

- Maytag refrigerator, white
- GE 18,000 BTU window air conditioner, like new
- Caloric gas cookstove
- China cabinet & hutch, handmade
- Kenmore 14 upright deep freeze
- Recliner
- Amana automatic washer, new in 2016
- Gone With the Wind-type table lamps
- Maytag wringer washer
- Maytag automatic dryer
- Desk
- Siegler living room heating stove
- 2, 4-drawer chests
- Sewing machine cabinet
- Chrome kitchen table
- Lot canning jars
- Lot canning supplies
- Pots, pans, bakeware
- Fans