

ANTIQUE GAS ENGINES



-2 Maytag gasoline engines & starter assembly parts
-New spark plugs for old engine



-Brass drain cocks & brass spigots for gas engines

ANTIQUE & COLLECTIBLE AUTOMOTIVE



-Caterpillar grease barrel, 20 gal.



-Wagner brake parts cabinet

-Molub-Alloy grease barrel, 20 gal.
-1 gal. & 2 gal. advertising cans
-Rochester carburetor cabinet
-N.G.K. spark plug cabinet
-Interstate batteries rack
-1 - 8 oil bottle carrier



-2 glass gear shift knobs



-Carter fuel filter cabinet



-4, 1 qt. oil bottles with spouts

FURNITURE



-High desk with stool, podium type

- Wooden snack tables with rack
- Oak table 2'x4'
- Coffee table
- Taper front display cabinet, 22" wide x 56" long x 16" high
- Lawn chairs, wood & metal

PAPERWEIGHTS



-10 small anvil paperweights, several with advertising



-Buster Brown & Tige paperweight

- Century Electric Motor paperweight
- Heinz cast iron dog paperweight

-IH Cub Cadet paperweight

ANTIQUE & COLLECTOR TOOLS & TOOL BOXES



-Large drill bits, hatchets; Keen Kutter, Winchester, plumb (embossed with wood chopper)



-Cast iron seat



-Keen Kutter leg vise, post vise

- Hand saw collection; boat, airplane, race car, train etchings

- Nail & metal saw, old
- Keen Kutter wall tool box, been painted, 1930s
- Stanley wall tool box, been painted, 1930s
- Hay knives
- Buck saws
- Cross cut saw
- Cattle dehorner
- Push garden plow
- H.D 5' pry bar
- R.R. pry bar
- Oliver single tree

HUNTING & FISHING MEMORABILIA



-St. Charles/Lincoln County Ducks Unlimited Club location map



-Wood duck decoys 1930s

-Fishing plugs

-Salt water rods & reels

- 1993 Winchester metal display box 500, 22 cal LR
- 2 Remington metal display boxes, 400, 22 cal LR
- 14 old boxes 410 shells, 8 full & 6 empty display boxes
- Glass decoy eyes



-Original 1923 Remington Game & Fowl identification poster



-Old iron shooting match duck



-Johnny Stewart electronic predator call, like new



-Winchester calendar



-Keen Kutter, The Dog Doesn't Mind



-Wood shell boxes, 12 ga & 410 ga

SMALLS & SALESMAN SAMPLES



-Flexible Flyer sled, 16" long

- Have A Heart Trap, 10" long
- Singer #20 sewing machine
- Simmons Wonder 1 qt. ice cream freezer
- Witte 1 qt. ice cream freezer



-Baby Jeannette, metal pint ice cream freezer

- Kant Hook, 13" long
- 4" cross cut saw, cut down
- Small buck saw
- 2 boat paddles, 14" & 18" long
- Wood shovel, 35" long



-Pasthole digger, 21" long



-Jemco salesman sample wood stove, 12" high

SHOP & POWER TOOLS



-Small metal punch press, 3 ton



-Horizontal metal cutting band saw



-2 large flood lights 500w/1,000w

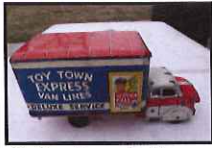
- Salesman sample elevator grain probe, 18' long
- Salesman sample True Temper pitch fork, 30" long
- Pick axe, 14" long
- Snowshoes, 16" long
- Child's snow shovel, 30" long
- Craftsman belt axe, 11" long
- Small berry bucket, 2 1/2" high

- 220 volt Craftsman air compressor & 1, 110 volt air compressor
- Craftsman arc welder
- Delta band saw, new in box
- Craftsman 10" table saw

ANTIQU & COLLECTORS TOYS



-Concrete mixer



-Toy Town Express Van Lines



-Tonka sand loader/ Tonka Dump Truck



-Buddy L 1930 sand loader



-Buddy L trucks



-Satellite Jumping Shoes



-Tonka ladder fire truck



-Nylint tractor & dump trailer



-Doll fainting couch, 30" long



-Nylint farm truck & trailer



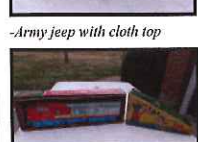
-Stucco tractor & earth mover



-Arcade & Hubler car hauler



-Arcade toys



-Bear Playing Ball



-1950s tin merry-go-round



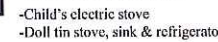
-Ertl 1993 Maytag washer



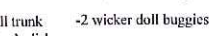
-Horse drawn wagon



-Snowman bag toss game



-Child's electric stove
-Doll tin stove, sink & refrigerator



-Old child's doll trunk
-Vintage children's dishes
-Doll quilts
-2 wicker doll buggies
-Schoenhut piano

-1987 farm toy show tractor Massey-Harris 33

-Small 2 wheel Simmons Koffee Krusher, Keen Kutter



-Oak coal or ash box



-Tin washing machine & Childs sad irons



-3 Aladdin lamps compete with shades

ANTIQU & COLLECTORS DOLLS

- 1920s unmarked, composition & cloth doll in white highchair
- Antique bisque head German A&M
- American character Tiny Tears, all original
- 20" 1950s Miss Revlon, all original
- 1950s American character Sweet Sue, all original
- Arranbee, all original, composition
- Unmarked, bent leg, composition baby
- Unmarked composition & cloth doll



-Madame Alexander Marybel in original box

- Pair small china head, Dutch dolls from Germany
- Small china head dolls
- 1950s Circle P, 10 1/2 in, fashion dolls
- 1950s unmarked, hard plastic Ginny type dolls
- 1950s vinyl dolls by Flagg Co.
- Unmarked 9" hard plastic dolls
- 14" vinyl doll by Egee, all original
- Misc. doll clothes

ANTIQUES & COLLECTIBLES

- Arcade wall coffee grinder
- Oak wall telephone
- 2 brass lamps
- 2 brass electrified lamps with shades
- Flat wick kerosene lamps
- Gasoline lamp with glass shade
- Terminal railroad lantern
- M.K. & T. etched red globe railroad lantern
- Seth Thomas mantel clock
- Graniteware coffee pots, pans & potty
- Bayonet & German knives
- Old books
- Robinson Caruso
- Adventures of Perrine
- Adventures of Huckleberry Finn
- Lightning rod glass balls
- 15" blade fan



-Wabash, etched globe railroad lantern



-Train motion lamp



-Dutch Boy Paint lamp



-2 Harper's 1866 pictorial Civil War books



-The Adventures of Tom Sawyer



-Weather vane lightning rods, 1 horse & 4 arrows



-Child's chairs



-Cast iron cake filler



- Whirly birds
- Skunk & Wild Turkey decanter in box
- Bear Cub & Wild Turkey decanter in box
- Duck hunter decanter
- 1940s Philco table top radio, works



-Delft Blue and blue & white; 4 clocks, 2 coffee grinders, misc



- Fenton glassware, 12 pieces
- Watch fobs
- Grain drill ends



-Arrowheads, mostly St. Charles County, approx. 9 total



- 2 chicken watering crocks, 2 sizes
- Cream top milk bottles, 3 sizes
- Russell's 1/2 pint cream top bottle with spoon
- Small coffee cream bottles
- Small gray berry bucket & funnel

- 2 silver electric coffee pots
- 2 - 1858, 2 qt. blue Atlas mason jars with zinc lids
- 2 - 1 pint glass top, blue jars
- Apple box
- Oxydol wooden box
- Wood dynamite box
- Large glass jar with lid
- Brass lady candle holder
- 3 pair antique, high top women's shoes; cream color, brown, black & white
- Winchester food grinder
- Winchester flashlights
- 5 German Homer harmonicas



-2 amber lighting jars, 1 qt.



-Army drill sergeant hat



-Eagle flagpole top



-Rooster weathervane

- Sewing machine legs
- Quilts
- Canning jars
- Vintage holiday items
- Old Bell & Howell 16MM camera
- 127 Argus camera kit in box
- Old Sony digital still camera, MVC-FD81 in case with charger



-Antique skirt, jacket & hat on dress form



-Folk art wooden, drunk men bottle openers & corkscrews



-Farm tractor & engine manuals