

**TO BE SOLD THURSDAY APRIL 20TH**

**POWER WASHER – GENERATOR – GARDEN & YARD TOOLS**



- Honda F-401 tricycle type garden tiller

- Dayton Model 37830, electric sprayer with wand
- Ex-cell Pressurewave power washer, 2200 PSI, 5.5 hp
- Honda E2500 generator
- John Deere yard trailer
- Pull type yard aerator
- John Deere walk behind edger, gas type
- 3 – 2 cycle weed eaters, 1 Stihl FS 75 2 cycle
- 2 Echo EA500, 2 cycle augers
- Echo CS 3450 chainsaw
- Lot garden hose & reels
- Lot soaker hose
- Mole traps

**DOORS – STREETLIGHTS – POLES – MISC**

- 3 fiberglass light poles with lamps
- Allister ½ hp garage door opener
- 12' decorative iron panel
- Set 36" French doors
- Lot 36" interior doors
- Porcelain sinks
- Lot wooden spindles
- Misc lumber

**PAINT SPRAYER**

- Graco Magnum Pro LTS 17 air type paint sprayer, 110, like new

**50+ GEESE & DUCK DECOYS**

**NOTE: The farm has an electronic gate. Gate will open on Wednesday and Thursday morning (days of sale) at 8:00 A.M. Everything must be out by Saturday April 23rd at 5:00 P.M. NO EXCEPTIONS**

**OWNERS  
KENNETH A. & LINDA BEHLMANN**

**AUCTIONEERS:**



**DAVID THORNHILL**  
Troy, MO



**DUSTY THORNHILL**  
Troy, MO



**BILL UNSSELL**  
Frankford, MO



**Troy Office: 636-366-4206.**  
**For Full Listing, visit**  
**www.thornhillauction.com**



Lunch will be served. All buyers will be photographed. Terms: Cash or Good Check with Current Photo I.D. Out of State Photo I.D.s and Out of State Checks must be accompanied with a Bank Letter of Credit, call for details. We do not accept Cashier Checks. Items sold with no warranty. They stand sold AS IS. Owner & Auction personnel not responsible for accidents day of sale! Announcements made day of sale take precedence over any advertisement!

David Thornhill – 314-393-7241 Dusty Thornhill – 314-393-4726 Bill Unsell – 573-470-0037  
Troy Office: 636-366-4206 For full listing & terms of this auction – www.thornhillauction.com



*Having decided to sell our home in Eolia and spend more time in Florida, we will sell all*

*the following at Public Auction on:*

**Wednesday April 20, 2016 at 10:00 A.M.**  
**& Thursday April 21, 2016 at 10:00 A.M.**

**SALE SITE 2293 Hwy 61; Eolia, MO 63344 – Look for American Flag, lake and gated entrance.**

**DIRECTIONS:** From Hwy 61 & 47 at Troy, MO go north on Hwy 61, 20 miles to farm on right (north of Eolia 3 miles) From Bowling Green go south on Hwy 61 approximately 11 miles to Hwy 00 Exit. Turn left, cross the median and head back north on Hwy 61 approximately ½ mile to sale on right – Sale is on the east side of Hwy 61



**2 Day Auction**

**OWNERS:  
KENNETH A. & LINDA BEHLMANN**

**AUCTIONEERS NOTE:** The Behlmanns started in the GMC van & truck sales in 1972 in Florissant that grew into the GMC van & Pontiac dealership that relocated in 1990 to 270 & McDonnell Blvd, where they continued to sell GMC trucks, vans and Pontiacs. Their business grew to be the #1 retail dealer in the country. Ken retired in 2003. Their farm in Eolia has been admired by anyone traveling north on Hwy 61. When the Behlmanns did it, they truly did it right. You'll never meet two kinder or more humble people than Ken and Linda. We are honored to have the privilege to sell their sale. This is as good as it gets, from trucks to furniture. Here's one you won't want to miss. See you at the sale. David, Dusty & Bill

*Celebrating 53 Years In Business*



**TO BE SOLD WEDNESDAY APRIL 20TH BEGINNING AT 10:00 A.M.**

**PRINTS QUAILS UNLIMITED – DUCKS UNLIMITED & ARTWORK**



- 2. 2005 Quails Unlimited Bob Whites and Prickly Pear by Stephen Snyder, #4064 of 4500 print in frame



- 6. Budweiser 2005 Quails Unlimited Adopt-A-Covey by Allen Copeland print in frame



- 8. Sundown Covey by Richard Plasschaert, 4064 of 4500 print in frame

- 1. Unto The Least of These by G. Harvey #5260, Limited Edition Print in frame
- 3. Lookin For The Right One by Pamela Kelley #4064 of 4500 print in frame
- 4. 1985 R. Hinton Autumn's Proud Pair Pheasants Forever print and button in frame
- 5. 1997 Widgeons Missouri Ducks Unlimited sponsor print by Harold Roe print in frame sponsored by Riggs
- 7. Mallards at Meyer Lake by Rose Mary Millette, 412 of 2000 print in frame
- 9. Steady by Allen Copeland 4064 of 4500 print in frame
- 10. Busting Out by Harold Roe, 394 of 2500 print in frame
- 11. Meadow Pond by S. Bloom, 6 of 215 print in frame
- 12. Waters Edge, 96 of 275 print in frame
- 13. Bob White Trio by David Lanier print in frame
- 14. Print in frame from Sidney Australia
- 15. Old Town Florissant Conway House print in frame, signed
- 16. Print in frame, St. Ferdinand Shrine Florissant signed by Victor Joseph Kunz
- 17. South western prints

**AMISH MADE DINING ROOM SET**



- Oak table, 9'x40" wide with 10 oak chairs and 2 piece oak hutch, massive set



**8" TOMAHAWK**



**COMMERCIAL FLOOR SCRUBBER**

- Power Flite 17 – 300 rpm Super High commercial performance scrubber/buffer, nice piece

**FISHING EQUIPMENT**

- 25+ rods & reels
- Lot fishing tackle
- Lot tackle boxes
- Lot spotlights

**OAK 10 GUN, GUN CABINET**



**BUNK BEDS**



- 2 custom made 13' double bunk beds, oak, handmade, sleeps 4

**AIR RIFLE & AIR PISTOL COLLECTION**

- Daisy Model 98 BB gun
- Daisy Model 30-30 Buffalo Bill Scout BB
- Daisy 20th Anniversary Power Line 880
- Power Line #917 .177 caliber
- 3 Power Line Model 722, 22 cal pellet pistols
- Daisy .177 cal pistol with holster
- Note: most have boxes
- Portable shooting target
- Hoppe's clay bird thrower

**SET MOTOROLA CLS 1110 SERIES TWO-WAY RADIOS**

**LOT BIG MOUTH BASS & CRAPPIE MOUNTS**

**COIN MASTER METAL DETECTOR**

**TO BE SOLD THURSDAY APRIL 20TH**

**SHOP TOOLS & MISC**



- DeWalt 13" thickness planer on stand
- Craftsman 4 hp, 25 gal. portable air compressor
- Performax 12" miter saw
- Craftsman table saw
- Skil router with table
- B&D table top band saw
- B&D compact saw
- Stanley heater
- DeWalt 7.2V flex head drill
- Bosch 9.6V drill
- B&D Fire Storm 14.4 cordless power tool set in case
- Craftsman 6hp shop vac
- Skil power hand saw
- 11' work bench with bench vise
- Jump box
- Miter box
- Lot pliers, screwdrivers, etc.
- Coleman propane radiant heater
- Tool boxes
- Chain hoist
- Mr. Goodwrench stools
- 30 amp battery charger, Power-Mate
- Ten amp battery charger
- Ray-O-Vac 20 amp battery charger
- Adjustable top lengths
- Drawbars
- Reese hitches
- Steel post driver
- Lot chains
- Shovels, tamps, axes, forks, rakes, hoes, pruners, etc.
- Chocker cables
- Partial List

**LOG SPLITTER SELLS AT 1:00 P.M.**



- Troy Bilt 8 hp LS338, 33 ton trailer type, vertical/horizontal log splitter

**METAL BRAKE & LADDERS  
SELL AT 12:00 NOON**

- 126" Tapco metal brake, like new
- 28' aluminum extension ladder
- 1 set scaffolding
- Werner 26' extension ladder
- Werner 12' step ladder
- Lot wooden step ladders

**SEEDER SELLS AT 1:00 P.M.**

- Gill STR 72-2 Woods 3 pt seeder, looks new
- Salt Easy 12 volt seeder

**FIREWOOD  
SELLS AT 12:00 NOON**

- Approximately 10 cords of split firewood

**POWER SYSTEM SUBPANEL FOR CHRISTMAS LIGHTS  
Designed by David Wommack**



## TO BE SOLD THURSDAY APRIL 20TH BEGINNING AT 10:00 A.M.

### TRUCK SELLS AT 1:00 P.M.



- 2003 GMC 3500 Duramax diesel, 1 ton cabin chassis with 9' Rugby electric bed with 8' side tool boxes, 4 wheel drive, automatic with air, power steering, brakes & doors, AM/FM stereo, leather interior, 51,500 actual miles, kept in climate control garage, one owner, showroom condition, red

### TRACK HOE SELLS AT 1:00 P.M.



- 1985 Kubota KH-90 EXC Bull Pet X with tracks, Ser. UM007769 with 2' bucket & 14' arm, cab with heat, bought new, kept garaged, only 275 hrs.

### TRAILER SELLS AT 1:00 P.M.



- 2003 Brooks Bros. 21' dovetail pintle hitch trailer, tandem axle (2 - 6,000 lb. axles), 16,000 GVWR-W, 16' removable metal sides with ramps, built to match above truck, like new

### 4 WHEELERS SELL AT 12:30 P.M.



- 2003 Sportsman Polaris 600 Twin True 4x4 on Demand, automatic with winch, only 63.4 hrs or 315 miles, dark green, this was Ken's  
- 2003 Sportsman Polaris 600 Twin True 4x4 on Demand, automatic with winch, only 35 hrs or 189 miles, dark blue, this was Linda's



- 1996 Polaris Sportsman 400 4x4, liquid cooled, Demand 4 drive, automatic, 3,350 miles



- 1986 Honda 4x4, FourTrax, 4 wheeler, looks new

- 4 wheeler tires & rims

- NOTE: All the 4 wheelers are as clean as you'll see

### GATOR SELLS AT 12:30 P.M.



- John Deere 6x4 Gator with Curtis cab with heat, electric dump bed, like new only 713 hrs.

### GOLF CART SELLS AT 12:30 P.M.



- Yamaha gas golf cart with headlights, roof, windshield & winter enclosure, like new

## TO BE SOLD WEDNESDAY APRIL 20TH

### SAUNA & EXERCISE EQUIPMENT



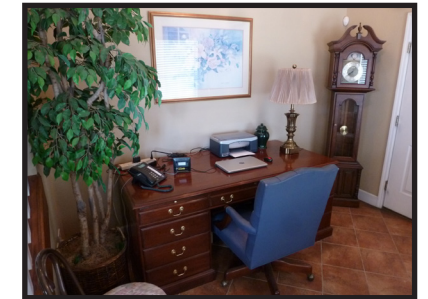
- Red Cedar sauna
- Body Build Fitness equipment
- Tectrix Climb Max
- True treadmill
- Hoist fitness system
- Fit Master massage table
- Pads
- Health-O-Meter scale



- Everlast punching bag

- Dumb bell weights
- Barbell weights
- Partial List

### OFFICE EQUIPMENT



- Large mahogany office desk

- Oak roll top desk with oak swivel chair
- Oak drafting table
- Cherry wood wall mount bookshelf
- Epson fax/copy machine wireless
- Office chair

### GRANDFATHER CLOCK

- Howard Miller grandfather clock, beautiful piece

### WESTERN SADDLES & STAND



- 2 western saddles; 1 full size, 1 youth

- Misc bridles & tack
- Fancy portable saddle stand, handmade

### ORGAN



- Hammond organ & bench, oak case, nice piece

### PFALTZGRAFF



- Napoli pattern; pitchers, bowls, platters; dinner set & accessories, etc.  
- Complete set of dinnerware

### PATIO & YARD SETS



- Cast metal type patio table & 8 chairs, 2 small tables, very nice set with umbrella



- Wire mesh patio table & chair sets, 1 with extra lounge, etc.
- Weber propane grill, nice
- Ornate heavy duty custom made wood rack
- Fish fryer
- Lot cedar birdhouses
- Lot patio furniture
- Concrete flower pots

### LOT BARBIE DOLLS



### PRECIOUS MOMENTS COLLECTION 150+ Pieces from 1980s to approximately 2000



- Dolls, train set, plates, figurines, etc - most N.I.B.



**TO BE SOLD WEDNESDAY APRIL 20TH**

**ANTIQUES & COLLECTIBLES**



- 1930s oak breakfront armoire, 4 door, very ornate piece



- Oak carved sideboard with bevel mirrored top, 6' long by 7' tall by 19" deep, beautiful piece



- Fenton cranberry color pitcher & tumbler set



- Western Electric oak wall telephone



- Early cigar stand



- Waterfall pattern Art Deco bedroom set; bed complete, dresser & wardrobe

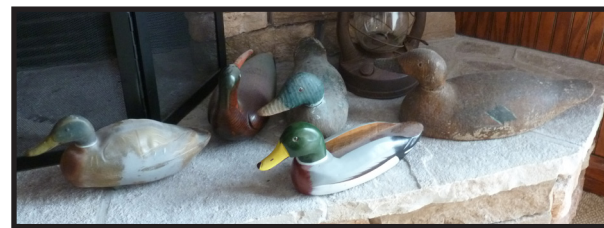


- Lane retro cedar chest



- Doll buggy

- Pelouze postal scale



- Carved wooden decoys

- Oak hall tree, seat type
- Oak slat back rocker
- Wicker child's rocker
- 4 oil lamps
- 3 oak child's rocking chairs
- Lot crystal stemware
- Signed Fenton fluted server by Nancy Gribble
- Johnson Bros. pitcher
- Bavaria plates
- 2 Cabbage Patch dolls
- Bronze bookends
- Child's tea set in box
- Retro bookcase
- Fire Department Co. #1 fire truck, peddle type
- 1950s step stool
- Seritago wooden coach & horse set
- Hanging leaded glass lamp
- Barn lanterns
- Wooden soda crates
- License plates 1929, 1967, 1969, 1971
- Weather vane
- Tools
- Hat collection
- Hinges & hardware
- Lot 60s, 70s, 80s games
- Snoopy pull toy
- Child's Flyer wagon
- School desk
- Washtub set
- Partial List



- Cast iron implement seat

**TO BE SOLD WEDNESDAY APRIL 20TH**

**HOUSEHOLD**



- Pottery Barn 3 cushion sofa & chair, brushed canvas, sierra color, nice set



- Round oak table with leaf & 4 chairs



- 5 piece oak queen size bedroom set by Stanley; bed complete, chest type wardrobe, dresser with mirror & 2 nightstands, nice



-Pottery Barn bedroom set; 2 twin beds complete



- Oak bedroom set by Chatham-Oaksby-Drexel; queen size bed complete, highboy dresser, wall mirror & nightstand



- King size bed complete with headboard



- 3 piece Flexsteel top grain leather sectional corner sofa, seats 8, periwinkle, nice



- 2 Century, plaid cloth recliners, same as new



- 2 Pottery Barn, 20 bin storage cabinets



-Pottery Barn spool/rope lamp table

- Flexsteel 3 cushion sofa & side chair
- Flexsteel 3 cushion sofa
- 3 Hitachi 42" flat screen TVs, Ultravision with stands & wall mounts, like new
- 4 piece Harden end table/coffee table set
- Ballard design entry table
- Set 4 maple, swivel bar stools
- Oak entry table, coffee table, end tables
- Headboard and dressers, hard maple
- West Bend 25 - 55 cup coffee maker
- Mikasa fine china service for 12 with accessories
- 66"x36" ornate framed wall mirror
- Fruit pattern dining room picture in frame, large
- Brass planters with artificial plants
- The Hunting & Fishing Library
- Lot nautical decorations; sea shells, etc.
- Large lot Christmas interior decorations
- Lot Christmas animated decorations
- Wrought iron custom made nativity set, outside set
- Large lot exterior Christmas decorations
- Lot kitchen appliances
- Oak portable bar
- Leather recliner
- 2 Pottery Barn lamps
- Art Deco wall mirror
- Lot duck memorabilia
- Lot decorative baskets
- Lot table & floor lamps
- Fireplace sets
- Lot brass decorations
- Lot bedding
- Lot dishes & glassware
- Wall clocks
- Fans
- Bar memorabilia
- Lot bird decorations
- Directors chairs
- Tent
- Lot golf clubs & bags
- Game tables
- Fold up tables
- Rattan side chairs
- Lot hard back books
- Lot kitchen appliances
- Lot coolers
- Lot DVD players



- Dark mahogany drop front secretary with bench



- Trend oak case wall clock



- Huge hurricane type chandelier



- 2 stenciled back rockers