



# THORNHILL AUCTION

## & REAL ESTATE COMPANY

Due to the death of my husband, I will sell all the following at Public Auction on:

# SATURDAY AUGUST 13, 2016

## BEGINNING AT 10:00 A.M.

SALE SITE: 511 N. 5th Street; Elsberry, MO 63343

DIRECTIONS: Take Hwy 79 to Elsberry, MO, at 3-way stop, go west on Hwy B (Main Street) to right on N. 5th Street to #511 on the left

### WELDERS - WELDING SUPPLIES



Lincoln Electric Ranger 250, shows 1030 hrs, K1725-7, 10954, U1030601335, CT Chopper Technology, nice set



Idealarc 250 Lincoln welder



Tig Magnum welder, SG control module, spool gun



6'x33" welding table w/ 1 1/2 in. steel top

- 6'x6' portable welding trailer, single axle w/vise & tool box
- Dry rod by Phoenix welding rod box
- Large assorted welding rods, lot E7018, etc.
- Set new acetylene gauges
- Lot cutting tips & torches
- Milwaukee power disk grinder
- DeWalt power disk grinder
- Acetylene set, complete
- Lot welding clamps
- Welding gloves
- Welding leads

### CANOE - FISHING TACKLE - HUNTING SUPPLIES

- Grumman 16' aluminum canoe
- Sears 7.5 hp outboard motor
- Large lot rods, reels, fly rods, etc.
- Large lot tackle - several tackle boxes
- Minnow seine
- Size 10 & 11 waders, boots
- Fishing vest
- Lot traps
- Boat winch
- Lot decoys

### STEEL - METAL



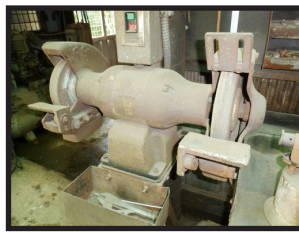
Lot steel; flat iron, square tubing, I-beams, pipe, rectangular tubing, etc.

- 4'x7' & 4'x10' sheets stainless steel

### SHOP & MACHINIST TOOLS



LeBlond lathe, floor model, spindle speed w/42" bed, 3 phase, chuck & accessories



Baldor 3 phase, commercial grinder, floor model



Dake Aubor press on stand



Floor model, belt driven drill press



Fairbanks Morse platform scale



3 phase, 5 hp air compressor



Metal Devil, 14" metal cutting saw w/diamond notched blade



Chain hoist on portable crane type frame



Commercial chain hoist

- Mayer Bros. trip hammer, floor model
- Electric engraver
- DeWalt metal chop saw
- Sears 10" 2.75 hp, radial arm saw
- Small hand metal shear
- Floor model grindstone on stand
- Craftsman 12 gal. 3 hp shop vac
- Craftsman 3/4 drive socket set
- Floor model shop fan
- Hitachi power drill in case
- Roll around floor jack
- 1/6 hp submersible pump
- Porter Cable tiger saw in case
- Lot open end/box end wrenches, various sizes

- Craftsman bench grinder
- Craftsman electric hand sander
- 2 metal bolt bins w/hardware, 1 Curtis
- Chain hoist on portable crane type frame
- Craftsman sawsall
- Pack Mule come along
- Die Hard battery charger
- Lot machinist drill bits
- 1/2 in. drive socket set
- Adjustable wrenches
- Lot hammers, hatchets
- Chicago 1/2 in. reciprocating saw

- Lot channel locks
- Iron sawhorses
- Drill Doctor in case
- Aluminum straight edge
- Extension cords
- Lot pipe wrenches
- Small anvil
- Socket sets
- Lot power tools
- Ratchet hoist
- Rod metal shear
- Log chains
- Come along
- Caster wheels
- Lot hardware
- Lot C clamps
- Wagon jack
- Tools boxes
- Lot punches
- Lot hardware
- Mauls
- Machinist vise

### ANTIQUES & MISC

- Small, 3 drawer chest w/buttermilk paint
- Milk can
- Mobile Oil cans, approx. 20 gal.
- Blow torch
- Washtubs
- Wooden Pepsi soda crates
- Columbian bench vise
- Lot planes
- Deluxe dart board set
- Sears apartment size refrigerator
- Coleman coolers
- Hunting magazines

### BLACKSMITH FORGE 32"X32"

### STEEL HAULING HOMEMADE TRAILER

- 12' single axle trailer w/adjustable tongue & 2" ball, hauls up to 20' pieces

### CHAINSAWS & MISC

- McCulloch 610 chainsaw
- McCulloch Mac 110 chainsaw
- Scaffolding
- Misc 2x10s & 2x12s
- Steel post driver
- 18' - 3"x12" cedar beam
- Steel barrels
- Wheelbarrow

**OWNERS:**  
**PEARL V. LAGEMANN**  
**LATE VIRGIL (JOHN) LAGEMANN**

## AUCTIONEERS NOTE:

John & Pearl were married over 65 years. They were active members of Sacred Heart Catholic Church in Elsberry. John worked as a maintenance man and had his own shop behind their home. He loved to fish, hunt & trap. Please note, this is a partial list as the cabinets are full. See you at the sale. David, Dusty & Bill

Lunch will be served. All buyers will be photographed. Terms: Cash or Good Check with Current Photo I.D. Out of State Photo I.D.s and Out of State Checks must be accompanied with a Bank Letter of Credit. We do not accept Cashier Checks. Items sold with no warranty. They stand sold AS IS. Owner & Auction personnel not responsible for accidents day of sale! Announcements made day of sale take precedence over any advertisement!

David Thornhill - 314-393-7241  
Bill Unsell - 573-470-0037

Dusty Thornhill - 314-393-4726  
Troy Office: 636-366-4206



## AUCTIONEERS:



DAVID THORNHILL  
Troy, MO



DUSTY THORNHILL  
Troy, MO



BILL UNSELL  
Frankford, MO

Celebrating 53 Years In Business