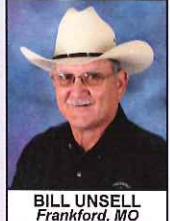
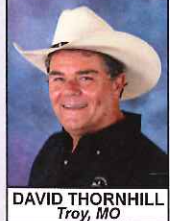


**OWNERS:
MICHAEL J. & DONNA L. NOONAN**

AUCTIONEERS NOTE: Michael & Donna have a beautiful home. Everything is very neat and clean. The horse arena is like new, Michael likes to restore gas pumps & collect gas memorabilia. He also has a large collection of toys. The furnishings in the home are extra clean. Great country sale with plenty of parking, we may sell in 2 rings part of the day, so come prepared. David, Dusty & Bill

AUCTIONEERS:



DAVID THORNHILL
Troy, MO

DUSTY THORNHILL
Troy, MO

BILL UNSSELL
Frankford, MO



Troy Office: 636-366-4206.

**For Full Listing, visit
www.thornhillauction.com**



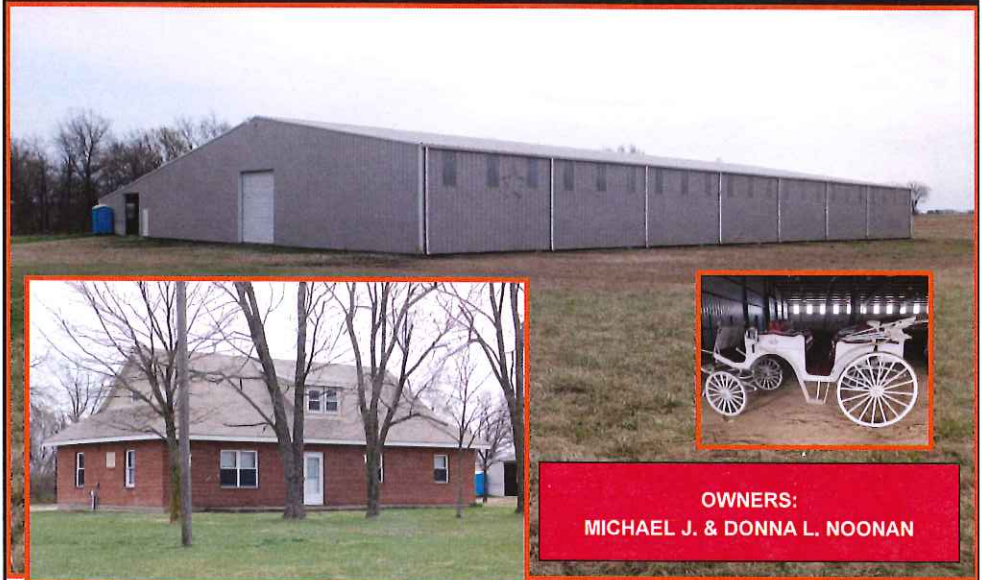
Lunch will be served. All buyers will be photographed. Terms: Cash or Good Check with Current Photo I.D. Out of State Photo I.D.s and Out of State Checks must be accompanied with a Bank Letter of Credit, call for details. We do not accept Cashier Checks. Items sold with no warranty. They stand sold AS IS. Owner & Auction personnel not responsible for accidents day of sale! Announcements made day of sale take precedence over any advertisement!
David Thornhill - 314-393-7241 Dusty Thornhill - 314-393-4726 Bill Unsell - 573-470-0037
Troy Office: 636-366-4206 For full listing & terms of this auction - www.thornhillauction.com

THORNHILL AUCTION

& REAL ESTATE COMPANY

We will sell all the following at Public Auction on:
SATURDAY MAY 20, 2017
BEGINNING AT 10:00 A.M.

SALE SITE: 92 Hwy NN; Jonesburg, MO 63351
DIRECTIONS: Take I-70 to Jonesburg Exit 183. Go north on Hwy E/County Rd. 250 approx. ¼ mile to first right on Hwy NN. Go 0.8 mile to left on Hwy NN and go 1 mile to sale on right



**OWNERS:
MICHAEL J. & DONNA L. NOONAN**

AUCTIONEERS NOTE: Michael & Donna have a beautiful home. Everything is very neat and clean. The horse arena is like new, Michael likes to restore gas pumps & collect gas memorabilia. He also has a large collection of toys. The furnishings in the home are extra clean. Great country sale with plenty of parking, we may sell in 2 rings part of the day, so come prepared. David, Dusty & Bill

Celebrating 54 Years In Business

REAL ESTATE TO BE OFFERED AT 2:00 P.M.

Brick Home – Indoor Arena - Acreage



Tract #1: 3.97 acres m/l in Section 6 TWP 47N R 3W in Montgomery County, MO, subject to Easements of Record, Exact Legal to Govern

Improvements include a 1 ½ story, brick home on a concrete slab with 3 bedrooms, 2 baths, living room, kitchen, dining room, utility room/mud room and attached carport built in 1980. The home has LP space heaters with a 25 ton window unit and 200 amp service. Other improvements include a 36'x83' machine shed with sliding doors and 100 amp service, 2 deep wells and fronts Hwy NN. Lays very nice.



Tract #2: Horse Lovers Dream. 18.6 acres m/l in Section 6 TWP 47N R 3W in Montgomery County, MO, Subject to Easements of Record, Exact Legal to Govern (Joins Tract #1 to the south)

Improvements include a 140'x200' steel frame, indoor riding arena (100' clear span), 5 overhead doors, approx. 40 overhead lights, insulated ceiling, same as new with concrete footing on east wall & concrete piers. Nice Tract, approx. 75% tillable, fronts on Hwy NN and Fischer Farm Road

Tract #3: Combination of Tracts #1 & #2

GAS PUMPS – PETROLEUM & STORE ADVERTISING SIGNS



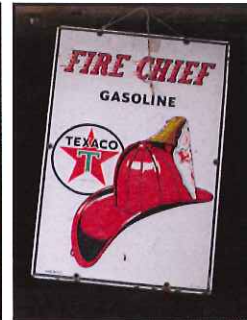
2 Wayne visible gas pumps to restore



4 Bennett shoulder pumps to restore



Browser Phillips 66, 11 doors



1950s Fire Chief Texaco (T) sign



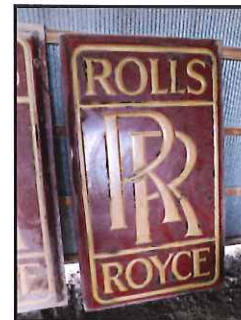
2 Armstrong Tires tin signs



Bentley 4'x7' advertising sign



Bentley Rolls Royce Service sign



Rolls Royce 4'x7' advertising sign



Phillips 66 Auto Cleaner in tin N.O.S.



Wolverine Boot & Shoe Co. electric sign

- Sinclair Gasoline sign
- Contains Lead sign
- Gas nozzles
- Repo Mobile Gas signs
- Brass radiator nozzles
- Road maps
- Phillips 66 chrome tin

- Bailey Hats advertising sign
- Dr. Pepper Frosty Cold thermometer
- Repo Crown Gasoline signs
- Repo Marathon Products sign
- Drink Coca Cola 1950s in bottles cooler
- 1974 Chevy Camaro manual
- Coca Cola thermometer
- Pepsi Cola thermometer
- 2 Sinclair Extra Duty motor oil can banks
- The Eldorado Handmade Boot electric sign
- Georgia Boots advertising light



Repo - Crown glass globe

GAS STATION PAPER ADVERTISING



Willard Batteries & Phillips 66 tires



Cold Weather Calls for Champion Spark plugs



Lot store misc. advertising

- Hey Pop Don't Forget Lubri-tection Phillips 66
- Lot Robert Williams 76 advertising automotive prints
- Season's Greetings 66
- Get Set for Summer Champion

ANTIQUES & COLLECTIBLES



4 qt. butter churn



Glasco, Coca Cola dry box



The Barnum & Bailey Greatest Show On Earth by The Strobridge Lith Co. in frame



1950s era, 1¢ floor model, Tom Boys, gumball machine

- Wooden workbench w/wise, Emmery Waynesboro, PA
- Norman Rockwell Coca Cola thermometer
- Dale Earnhardt Winston Cup Champion picture w/stats; 1980, 86, 87, 90, 91, 93 & 94
- Set old west leather boots
- Oak frame w/girl & dog print
- Lot iron implement wheels
- Grant Fuhr, St. Louis Blues photo
- Annie Frances Lee painting in frame
- 9, Lucy by Morgan Weistling plate collection
- Western prints and advertising
- Repo cardboard diner advertising
- Budweiser 1999 Limited Edition tray
- Winchester 12 ga. wooden advertising cooler
- Mystic Guides, Rhythms of the Wild collection
- Grandpa's Treat by Hallmark Back Roads of America plate
- Butter crock w/cow scene
- White porcelain pans
- Wooden well bucket
- Galvanized wash tubs
- Race car memorabilia
- Repo Betty Boop cookie jar
- Lot repo Coca Cola trays
- Campbell's Soup trays
- Mac tool memorabilia
- Lot miniature collectables



1950s Coca Cola cooler

- Railroad trolleys
- Sad irons
- Implement seats
- 10' work bench
- Blacksmith forge
- Wooden ladder
- Railroad lantern
- Milk cans
- Wall mirror
- Antique tins
- Barn lanterns



Wells Fargo Co. reflector lantern, repo



2000 - 2 cases Budweiser #8 Dale Earnhardt beer bottles, 12 total



Tract #4: 8.9 acres m/l, unimproved, fronts on Hwy NN & Fischer Farm Road, 75% tillable, nice home site or add on Tract.

OPEN HOUSE ON THE REAL ESTATE is
Thursday May 4, 2017 from 5:00 to 7:00 P.M.
Or by appointment

REAL ESTATE TO BE SOLD AS FOLLOWS

Tract #1: 3.97 acres m/l in Section 6 TWP 47N R 3W in Montgomery County, MO, subject to Easements of Record, Exact Legal to Govern

Improvements include a 1 ½ story, brick home on a concrete slab with 3 bedrooms, 2 baths, living room, kitchen, dining room, utility room/mud room and attached carport built in 1980. The home has LP space heaters with a 25 ton window unit and 200 amp service.

Other improvements include a 36'x83' machine shed with sliding doors and 100 amp service, 2 deep wells and fronts Hwy NN. Lays very nice.

Tract #2: Horse Lovers Dream. 18.6 acres m/l in Section 6 TWP 47N R 3W in Montgomery County, MO, Subject to Easements of Record, Exact Legal to Govern (Joins Tract #1 to the south)

Improvements include a 140'x200' steel frame, indoor riding arena (100' clear span), 5 overhead doors, approx. 40 overhead lights, insulated ceiling, same as new with concrete footing on east wall & concrete piers. Nice Tract, approx. 75% tillable, fronts on Hwy NN and Fischer Farm Road

Tract #3: Combination of Tracts #1 & #2

Tract #4: 8.9 acres m/l, unimproved, fronts on Hwy NN & Fischer Farm Road, 75% tillable, nice home site or add on Tract.

NOTE; if you are looking for a move-in ready horse set-up, here it is. One of the nicest indoor arenas you'll see with easy access off I-70. The home is extra clean and move-in ready. Or if you are in need of a large storage building to store your car collection or warehouse, etc., here's a building that will work.

For more information contact David or Dusty at 636-366-4206

Terms: 10% down day of sale with balance of cash at closing on or before 30 days after the sale with possession at closing, subject to 2017 crop land.

For Virtual tour visit www.thornhillauction.com

TRACTOR - FARM & HAY EQUIPMENT SELL AT 2:30 P.M.



1135 Massey Ferguson, diesel tractor w/cab, 20.8-38 tires, shows 37xx hrs



Vermeer 555, The Hay Specialist XL Series, belt type, big round hay baler w/ electric tie, approx. 1000 bales, like new



Vicon, 3 pt, 2400 disk mower, 7'10", bought new



John Deere 336 string tie hay baler, small bales

- John Deere 660, 3 wheel, side delivery hay rake
- NOTE: Above hay equipment kept shedded, extra clean
- John Deere, pull type ground driven, rubber tired manure spreader
- 3 pt, 8' arena, 9 knife dirt grader
- John Deere 3 pt, 3 bottom plow
- John Deere 2 row, pull type rotary hoe
- Massey Harris 3 pt, 7' disk
- 1 section drag harrow

DUMP TRUCK SELLS AT 2:30 P.M.



1977 Chevy C-65 dump truck, 4 speed w/2 speed axle, 366 gas engine

CATERPILLAR SELLS AT 2:30 P.M.



Caterpillar D4, diesel high lift

TRAILER SELLS AT 2:30 P.M.

- 1995 Davis, 20' tandem axle, goose neck trailer w/ramps

HORSE - LIVESTOCK & ARENA EQUIPMENT



12' white, 12 panel corral w/walk through & gate, like new

- 1 - 18' set bleachers (3 tier)
- 1 - 16' set bleachers (5 tier)
- 8 cattle panels
- 550 gal. poly water tank
- Atlas barn lights
- Stock tanks
- Lot feed buckets
- Portable 8' sheep feeder
- Pitch forks
- Used T posts

FABTEK V24 10'X6' PLATFORM LIFT - APPROX. 24' LIFT



COLLECTORS TOYS - TRUCKS - AIRPLANES - ETC.



Die cast airplane collection; Mobile, John Deere, True Value, Coca Cola, Texaco, Wings of Texaco, Stearman Biplane, etc. all NIB

- 100+ Ertl truck banks; Sinclair, Citco, Big A Auto, Coca Cola, True Value, Budweiser, John Deere, Fire Truck, Amoco, Vintage Trucks, Shell, Texaco, etc. all NIB
- Shell & Texaco gas pumps
- Shell HO trains
- 3 Christmas porcelain gas station sets; Mobile, Texaco light up, NIB
- 1990 St. Louis Toy Show tractor trailer, NIB
- World's Toughest Cowboy bobble head

HOUSEHOLD & MISC



Mission style dining room set; oak trestle table w/2 leaves, 6 chairs & china cabinet, very nice set



Mission oak sofa & loveseat, southwest style

- Handmade cedar chest, very nice piece
- Matching oak secretary bookcase, dresser & desk
- Yard swing
- Picnic table
- Tramontina stainless steel servers
- Max Cold cooler
- New canopy in bag
- Welcome cast iron mat
- Horseshoe racks
- Wooden child's table & chairs
- Lot western memorabilia
- Western cuff links, silver collar tips
- Christmas sleigh
- Lot pots, pans, bake ware
- Lawn chairs
- Mr. Coffee
- Lot canning jars
- Leather woman's coat
- Men & women's insulated coveralls
- Atrium 6' door
- Shepherd hooks
- Concrete birdbath

WILLCOX GIBBS S.M. CO. COMMERCIAL SEWING MACHINE



LAWN & GARDEN TOOLS – FARM SUPPLIES & MISC

- Pry bars
- Log chains
- Adjustable top lengths
- Aluminum walk board, Model 20-24, 24'x14" wide
- Lot wooden telephone poles, corner post
- Aluminum I beam
- Lot square tubing, solid stock misc steel
- Lot wire panels
- Set rear axles
- Pallet split firewood
- Approx. 20 sheets, galvanized roofing, 14'
- Lot 2"x8", 12' oak used lumber
- Lot plastic barrels
- Electric fence supplies
- Lot water hose & reel
- Chevy, 2 ton truck radiator
- Lot scrap iron
- Shovels, rakes, yard & garden tools



Troy Bilt 8 hp, rear tine tiller

SHOP TOOLS & MISC

- Spot welder, Lincoln Mig Welder, Tombstone Welder, AS IS
- 2 air compressors
- Torpedo Reddy heater 55
- 3 – 8' roller tables
- Duracraft ¾ hp, 8" bench grinder
- ¼ drive socket set
- Large shop fan
- Lot assorted wrenches
- Partial List

PA SYSTEM

- Peavey PVi 4B power unit, 2 way speakers, stands & mike, nice unit

JOHNNY ON THE SPOT

BICYCLES

- Schwinn Classic Cruiser 1970s, woman's bike
- 2 child's bicycles, 1 Huffy

VISA VEE 2 SEAT CARRIAGE W/TOP (WEDDING TYPE) SELLS AT 2:30 P.M.
White with single & double hitch, nice



WINDMILL SELLS AT 12:00 NOON



Arrow Motor, Chicago Ill., approx. 30' windmill, disassembled, ready to move

6 PIECES OF HORSE DRAWN EQUIPMENT

HESTON BELT BUCKLES COLLECTION
77, 79, 84, 86, 88 ETC.

3 NIB US COMMEMORATIVE SOCIETY CLOCKS
1 - 1787-1987 1 - 1886-1986

