

## 2 HIGH-WHEEL FARM WAGONS

**SELL AT 11:30 A.M.**



High-wheel wagon w/scoop board, great condition

- Buck board wagon w/John Deere running gear w/iron wheels, great condition

## FARM MACHINERY

**SELLS AT 11:30 A.M.**

- John Deere BW 10' wheel disk  
- John Deere Van Burnt 15-hole wheat drill

## MARBLE COLLECTION

Large water jug full of shooter marbles & several small jars full



## POCKET KNIVES

**SELL AFTER FIREARMS**

- Winchester 3-knife set, N.O.S.  
- Browning Buckmark Hunter, N.O.S.  
- Uncle Henry limited edition set, N.O.S.  
- Old Timer 3-knife set, N.O.S.  
- Knife sharpener

## HOUSEHOLD & MISC.



Speed Queen wringer washer, good, works



Leather rocker recliner

- Leather rocker recliner  
- Kitchen table & 6 chairs  
- Single bed, complete  
- Lifestyler 700 exercise bike  
- Rival microwave  
- Fellowes paper shredder  
- Coffee table/end table set  
- 2, living room armed chairs

- RCA propane gas dryer, white  
- Sleeper sofa w/matching living room chair  
- Domestic sewing machine w/cabinet  
- Lot kitchen appliances: coffee, etc.

- 1950's United Furniture 4pc. bedroom set: headboard, dresser, chest & nightstand  
- Flexsteel 2-cushion sofa  
- Flexsteel swivel rocker  
- 2-door china cabinet  
- Cedar-lined wardrobe  
- Water pitcher & bowl  
- 2, wicker patio chairs  
- Metal fold-up chairs  
- Pots, pans, bakeware  
- Proctor Silex toaster  
- Lot Christmas décor

- Comfort lift chair  
- Pool table  
- Crosley stereo  
- Rival crockpot  
- GE child's organ  
- 2, metal lockers  
- Drive wheelchair  
- Picnic table & 2 benches  
- Meat grinder, hand-type  
- Lot baking dishes  
- Desk  
- Chest  
- Dome clock  
- Fans  
- Lot bedding  
- Coolers  
- Lamps  
- Scales, 70lb cap.  
- Corelle dishes  
- Partial list

## GOOSE DECOYS

- 2 dozen full body decoys  
- 2 dozen shell decoys  
- 1 dozen silhouettes

## ANVILS SELL AT 11:00 A.M.

- Trenton 180lb  
- Peter Wright 120lb  
- Unmarked 80lb  
- Golden Fleece motor oil anvil  
- Several paperweight anvils  
- Anvil Hardy



## OWNERS:

**LATE HARVARD & MARIAN JUNGERMANN  
JERRY JUNGERMANN & JOYCE PEZOLD & OTHERS**

AUCTIONEERS NOTE: Harvard & Marian were married over 50 years. They were members of St. Paul United Church of Christ, Defiance. Harvard farmed and Marian worked at Schnucks. Due to parking, the sale will be held at our Auction Barn. See you at the sale. David, Dusty & Bill

## AUCTIONEERS:



DAVID THORNHILL  
Troy, MO



DUSTY THORNHILL  
Troy, MO



BILL UNSELL  
Frankford, MO



Troy Office: 636-366-4206.

For Full Listing, visit  
[www.thornhillauction.com](http://www.thornhillauction.com)



Lunch will be served. All buyers will be photographed. Terms: Cash or Good Check with Current Photo I.D. Out of State Photo I.D.s and Out of State Checks must be accompanied with a Bank Letter of Credit, call for details. We do not accept Cashier Checks. Items sold with no warranty. They stand sold AS IS. Owner & Auction personnel not responsible for accidents day of sale! Announcements made day of sale take precedence over any advertisement!

David Thornhill - 314-393-7241 Dusty Thornhill - 314-393-4726 Bill Unsell - 573-470-0037  
Troy Office: 636-366-4206 For full listing & terms of this auction - [www.thornhillauction.com](http://www.thornhillauction.com)

# THORNHILL AUCTION & REAL ESTATE COMPANY

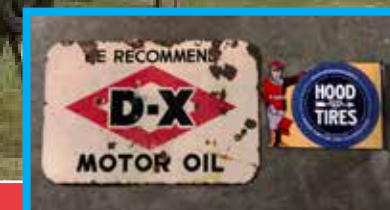
We will sell the following Personal Property of the Late Harvard & Marian Jungermann and others at Public Auction on:

**SATURDAY APRIL 24, 2021  
BEGINNING AT 9:30 A.M.**

SALE SITE: Thornhill Auction Barn; 421 John Deere Drive; Troy, MO 63379

DIRECTIONS: From Troy, MO go south on Hwy 61 to Moscow Mills Hwy C Exit. Go east on Hwy C to first 4 way stop, turn left on John Deere Drive (by Bank of Old Monroe) and go approximately 1 mile to sale on right, next door to Thornhill Real Estate Office.

Note: Sale will be held indoors in case of bad weather, come rain or shine.



## OWNERS:

**LATE HARVARD & MARIAN JUNGERMANN  
JERRY JUNGERMANN & JOYCE PEZOLD & OTHERS**

*Celebrating 58 Years In Business*

**ADVERTISING & PETROLIANA**



*D-X motor oil, double sided*

- Lot new John Deere metal/cast iron signs, new
- Winchester Rifles cast iron sign
- Lot oil cans: Mobil, Phillips 66, Sinclair, Kendall
- Texaco & Mobil signs, new
- Arkansas & Missouri RR oil can
- Velvet pipe tobacco, porcelain sign
- Good Year rubber tires porcelain sign
- Hoods Tires flanged sign, double sided
- Cow & horse weathervane toppers
- St. Louis Cardinals sign
- Mobilgas spouted oil can
- Aristo motor oil sign, new
- Red Crown gasoline sign
- Gulf gasoline porcelain sign
- Texaco INC porcelain sign
- Michelin Tires sign, new
- Coca-Cola cast iron base
- Glass oil bottle carrier
- Texaco oil bottles, new
- Case cast iron sign
- John Deere oil can
- Phillips 66 sign, new
- Oldsmobile sign, new
- Standard porcelain sign
- Texaco porcelain sign
- Glass oil bottles
- Partial list

**LAWN EQUIPMENT, TOOLS & MISC.**



*John Deere LT 155 riding lawn mower, 15hp, 38" cut, automatic, bought new, like new*

- Sears battery charger
- Step ladder
- 2-wheel dolly
- Pruners
- Portable air tank
- Weed scythe
- Lot used T post

- Farm Center portable air compressor
- Black & Decker cordless trimmer
- Lot assorted Craftsman tools & wrenches
- Legacy retractable air hose
- Shovels, rakes, hoes, etc.

**YARD & GARDEN DÉCOR**



*6' tall flower pot, Ferris wheel moves, neat pc.*

- Wooden art lanterns
- John Deere metal truck
- Craftsman vise
- John Deere bench
- Amish made wooden stars
- 3 1/2' metal rooster
- Partial list

**CAST IRON SEAT COLLECTION**

**SELLS AT APPROX. 1:00 P.M.**

VanDiver corn planter (round), VanDiver (Quincy II. 1872), Kingman, Maxwell, Hocking Valley, Tiger (Stoddard MFG Co.), Oliver Chilled Plow Works, Grand Detour, JI Case Plows Works, Esterly, Hoover & Co. (Miamisburg Ohio), Eureka, Pedal Grinder seat, 3 Deere-N-Co (Moline Il.), Albion, Champion, McCormick, Parlin & Orendorff Co. (Canton Il.), Crown, Rock Island Plow Co., Racine Wis, Bonanza, Milwaukee, Hoosier, Sylvester, Blackstone & Compy Ltd, Sattley, Budlong, Keystone (backwards), Browne Sulky, Howard, Deering, Taylor, Jenkins, Barlow, The Rake (Toronto), Fuller & Johnson MFG Co. (Madison WI), Empire, Buck Eye (Akron OH), Texas, Frost & Wood, Toronto 34, 3 no name



**GUNS & AMMO SELL AT 12:00 NOON**

- Savage Axis 308 Win, bolt-action, camouflage, N.I.B. w/scope, SN N113786
- Remington Model 700, 243 Win, bolt-action w/scope, N.I.B., SN RR29350G
- Savage Axis 308 Win, bolt-action w/Realtree wrap stock & Bushnell scope, SN 089148
- L.C. Smith 12ga, 32" full on full, side-by-side, SN 92587
- Winchester Model 67, 22 S-L-LR, bolt-action
- S & R Model 53A, 30-06, Springfield bolt-action w/scope, SN V165502
- Pardner Model SB1, 410ga, 3" full, single-shot, SN NL352099
- Winchester Model 1906, 22 S-L-LR, pump (crack n barrel), SN 463948
- Winchester Model 94, 30-30 Win, pre 64, lever-action, SN 2114963
- Forehand Arms, patented August 16, 1881, fine decarbonized steel, side hammer
- J.C. Higgins Model 20, 12ga pump
- Winchester Model 25, 12ga full, pump, SN 37028
- Stevens 16ga, model 94C, single-shot
- J. Stevens crack-shot 26, 22 LR
- Jimenez Arms Model J.A. 380, 380 cal, SN 122805
- Winchester Model 74, 22 LR, semi-auto, SN 385676A
- High Standard Elite King Deluxe, Model K4111, 410
- Revelation Model 260, 30-30 pump, SN B750288
- Hi Point Model 1095, 10mm, camouflage, SN M01161
- Wards Model 30, 12ga pump, SN SB562A
- Winchester Model 1200, 20ga, SN L684194
- Hi Point Model JCP, 40 S & W, SN 792613
- Taurus PT-22, 22 LR, SN Y101333
- Western Field 410, bolt-action
- SCCY CPX-2, 9mm, SN 901441
- 500 rounds of 223 cal



**ALL FFL LAWS APPLY. ALL OUT OF STATE FIREARM BUYERS MUST PRESENT A CURRENT FFL LICENSE. NO EXCEPTIONS**

**BUFFALO WEATHERVANE**



**6' BARN COOPALA**



**CIGAR INDIAN**



*6' wooden cigar store display*

**ANTIQUES, TOYS, COLLECTIBLES & PRIMITIVES**



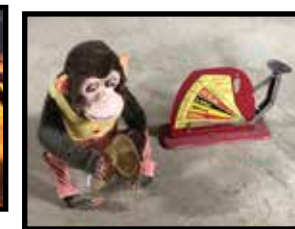
*6 lightning rods w/glass balls*



*Oak buffet w/mirrored back, nice*



*Tin 1950's child's dollhouse*



*Jolly Chimp toy*



*2 RR lanterns*



*Pony corn sheller*



*Wooden goat wagon*



*Folding Sawing Machine Co. Chicago, IL, museum pc.*



*6gal crown pattern crock 6gal Pittsburg pottery crock & 4gal bee sting crock*



*Wooden ship wheel*



*Oak turned-leg lamp table*

- Retro child's desk
- Child's wagon
- Early child's painted cabinet
- High-wheel tricycle
- Set 4 oak kitchen chairs
- Banana bike
- Accordion
- Beacon Camera II
- Retro lamp tables
- 5-gal western crock
- 3 & 5-gal crock, 1-IL
- Child's furniture
- Child's 6pc. dinner set
- Toy cap guns, 1 spitfire
- Lot games
- Barbie & Stacey set
- Lot doll clothes
- Lite-Brite set
- Child's cookware
- Pyrex bowls
- Crock bowls
- Grey granite pans
- Retro table lamps
- Tinker toys
- Toy machine gun
- Croquet set in box
- World globe bank
- Roller skates
- Toy firetruck
- Radio Flyer wagon
- Doll buggy
- Structo concrete truck
- Tonka dozer
- Buddy L pickup
- Toy Teddy pull toy
- 2 large pulleys
- Wagon seat

- 2, 1950's kitchen utility cabinet, counter-type
- 1950's plastic rabbit, Easter candy containers
- Set colored Pyrex refrigerator dish set
- Lot needle work, embroidering, etc.
- True Scale toy hay baler & manure spreader
- Fisher Price little lamb pull-toy
- Bride & bridesmaid dolls in box
- 2-wheel trailer for pedal tractor
- Etched glass basket
- Lot costume jewelry
- Retro Anchor glass server
- Retro pinecone set dishes
- Retro 1950's water glass set
- 2, Budweiser beer pitchers
- Galvanized washtubs & bucket
- 1950's child's kitchen set
- Root Heath #2 coffee grinder
- 2gal Macomb pottery w/horseshoe design crock
- MK-G wooden cartridge w/container, 1944
- Hampton Glassware Co. water dispenser
- John Deere, Ford, IH, MHF wrenches
- Spencer Kellogg's linseed oil can
- Wire milk bottle holder w/bottles
- Black Americana cast iron banks
- Flexible Flyer/Planet Jr. sled
- Wiah Charm small cast iron stove
- 4, 6' wooden porch columns
- 2, 5 1/2' wooden porch columns
- Brower MFG Co. egg scale
- License plates, 1920's-1970's
- Bull Meat Brand floor bin
- Brass bell mold
- RR oil cans
- 4qt. cream can
- Cotton scale



*Wolf trap*



*Primitive well bucket*



*1940's retro black & white Philco TV*



*Lard kettle & stand*



*1930's vanity*

- Wire egg basket
- Old judge jar
- Hand planter

- Standard oil can
- Longhorn horns
- 2 whiskey barrels

- Anchor brand wringer
- Louden Junior hay trolley
- Purina chicken feeder
- Levenworth ball & chain
- Coca-Cola cooler
- Wooden egg crate
- Cast iron elephant banks
- Child's crosscut saw
- 10gal glass water jug
- IH No. 9 toolbox lids
- Cast iron mailbox
- Pepsi Cola syrup jar
- Wabash RR lantern
- Brass paperweights
- Large blue jars
- Large glass jar w/handle
- 3 blue churns
- Crosscut saws
- Lot milk buckets
- Galvanized buckets
- Coca-Cola trays
- Blocks & pulleys jar
- #13 blue mason jar
- Enamelware
- Water can
- Newel posts
- Broad axe
- Primitive hall tree
- Large kraut cutter
- Snow shoes
- Butter churn
- Double ox yoke
- Single ox yoke
- 2 western-type mirrors
- Large dough bowl
- Partial list

