

OUTDOOR & SPORTING ANTIQUES SELL SATURDAY



Newhouse #15 bear trap



Assortment of old fish decoys & lures, River-Runt, Shakespeare, Mouse, rare K lures in box, etc.



Loggers bobsled in red paint, oval glass for table convert

DECOYS SELL SATURDAY



Duck & goose decoys: Mason Pintail set, Bluebills, Mallard, Dodge Working, etc. approx. 10



Crow decoy

- Illinois River, including Perdw
- Rare Anderson tin decoy
- Madison Mitchell early goose decoy

- Vintage Express sled in original paint
- Vintage child's pulling sleigh in green paint
- 7 tine, hand wrought fish spear

- Pair of old snowshoes
- Old wooden ice skates
- Beaver pelt, otter pelt

CHILDREN'S ITEMS SELL SATURDAY



Early steel wheeled tricycle



Old wooden wagon/ wooden wheels



Child's toolbox w/tools

- Straw stuffed animals: elephant, hippo, bulldog
- Old stuffed lion, rabbit, elephant, bear on wheels
- Fisher Price & Disney pull toys
- Die cast Allis Chalmers G tractor

- Small Steiff & mohair bears
- Old blocks
- Clay & glass marbles
- Elephant marionettes

AUCTIONEERS:



DAVID THORNHILL
Troy, MO



DUSTY THORNHILL
Troy, MO



BILL UNSELL
Frankford, MO



On any item purchased through our auctions, we are not experts on description or authenticity of item, buyers, it is your decision to purchase item as it appears day of auction.

Troy Office: 636-366-4206.
For Full Listing, visit
www.thornhillauction.com



Lunch will be served. All buyers will be photographed. Terms: Cash or Good Check with Current Photo I.D. Out of State Photo I.D.s and Out of State Checks must be accompanied with a Bank Letter of Credit, call for details. We do not accept Cashier Checks. Items sold with no warranty. They stand sold AS IS. Owner & Auction personnel not responsible for accidents day of sale! Announcements made day of sale take precedence over any advertisement!

David Thornhill - 314-393-7241 Dusty Thornhill - 314-393-4726 Bill Unsell - 573-470-0037
Troy Office: 636-366-4206 For full listing & terms of this auction - www.thornhillauction.com

THORNHILL AUCTION & REAL ESTATE COMPANY

59th YEAR IN BUSINESS

HISTORICAL EASTERN MISSOURI ANTIQUE & COLLECTIBLE AUCTION FROM THE LATE ALLAN & ANN BRADSHAW TRUST - MANY OF MUSEUM QUALITY

SATURDAY FEBRUARY 12, 2022

BEGINNING AT 9:45 A.M. - DOORS OPEN AT 8:00 A.M. &

SUNDAY FEBRUARY 13, 2022

BEGINNING AT 11:00 A.M. - DOORS OPEN AT 9:30 A.M.

SALE SITE: Thornhill Auction Barn; 421 John Deere Drive; Troy, MO 63379

DIRECTIONS: From Troy, MO go south on Hwy 61 to Moscow Mills Hwy C Exit. Go east on Hwy C to first stoplight, turn left on John Deere Drive (by Bank of Old Monroe) and go approximately 1 mile to sale on right, next door to Thornhill Real Estate Office.

Sale will be held indoors with heat and seating.



OWNER:
ALLAN & ANN BRADSHAW TRUST
MARK BRADSHAW TRUSTEE

AUCTIONEERS NOTE: Al & Ann lived in the Weldon Springs area from the 1970's to 1991 and became prolific collectors of good quality antiques and primitives from St. Charles County and beyond. They retired to a log house in Northern Minnesota, where the collecting bug didn't go away. Allan passed away in 2016, which eventually led to Ann's return to the area and the collection came home with her. She has recently passed, so we have been commissioned by their son, Mark, and the family to liquidate the following collection. See you at the sale, David, Dusty & Bill

Celebrating 59 Years In Business

COUNTRY STORE AND ADVERTISING SELLS SATURDAY



Museum Quality 7' Wooden "General Blacksmith" sign, Lebanon, OH, all original, great condition



6 spool cabinets: 2 – 6 drawer walnut J.P. Coats; 1 rare hanging walnut J.P. Coats; 1 Belding Brothers, 2 drawer, project; 2 - 2 drawer



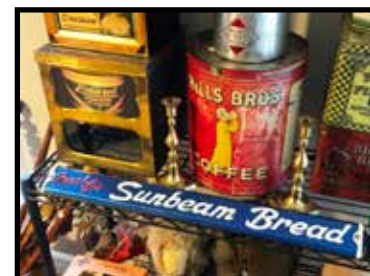
3 multi-drawer apothecary and store chests, walnut/ cherry



Elgin #42, 2 wheel coffee grinder, excellent, original example



2 Enterprise #2 coffee grinders, excellent condition



Sunbeam bread door push



Wood boxes, hoods, tobacco box Quincy IL., Home Shoe Repair, etc.



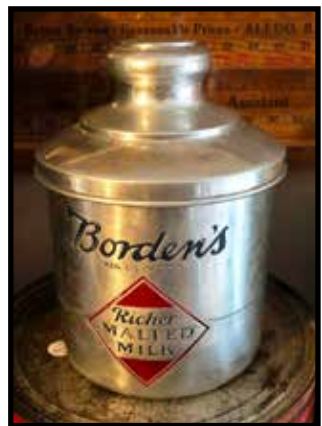
Rare Fairbury, Nebraska steer windmill weight



Signs including rare embossed Arterial Route Stop sign, Grape Nuts self-framed and wooden Minnesota Forest Service Fire sign in Old Paint, nice piece



3 fishtail scales, restored red/black



Malted Milk, coffee, tobacco & spice tins, some rare

- 1 Wright & Co, 2 wheel mini grinder
- Advertising thermometers including excellent Mail Pouch Tobacco
- Blanke's teapot w/chips & cracks
- Tip trays
- Match safes, Minnesota, Hermann, MO
- St. Charles & Barnum Dairies milk bottles & boxes
- Misc. advertising jars: Horlicks, Tom's Peanuts, etc.
- Advertising rulers & yardsticks, some Missouri
- Misc. advertising ephemera
- Roly Poly tobacco tin
- Tobacco cutter



World War II Bonds poster



Coffee bin: Bell & Conrad; 2 project boxes

BALANCE OF ANTIQUES & COLLECTIBLES SELLS SUNDAY

GARAGE & POWER TOOLS SELLS SUNDAY



Shopsmith multifunction system w/accessories, manuals, etc.



Porter cable joiner



Drill Doctor bit sharpener

- Delta miter saw
- Porter cable air nailer
- Makita sawsall
- Porter cable router
- Black & Decker drills
- Rockwell sander
- Grinders, sanders, etc.
- Porto power in case
- Shop Vacs – 2
- Proto rolling toolbox
- Heavy duty vise
- Assorted mechanics tools
- Come along
- Giant pipe wrench
- Sledgehammers
- Tap & die set
- Wrenches, sockets, drivers, pliers, chisels, clamps, drill bits, all varieties: Snap-On, Craftsmen, Stanley, etc.

LAWN & GARDEN SELLS SUNDAY

- Metal park bench
- Assorted lawn chairs
- Birdhouses & feeders
- Fertilizer canister spreader
- Husqvarna gas blower
- Asst. flowerpots
- Patio furniture: chairs, small tables
- Pickaxe, axe, saws, pruners, maul
- Misc. waterers, nozzles, etc.
- Assorted yard tools: shovels, hoes, rakes, etc.
- Fishing rods, reels, tackle boxes, nets/baskets, canoe seat, fuel tank for motor
- Wheelbarrow
- Metal trashcan
- Posthole digger
- Tarps
- Misc.

VINTAGE & NEW HARDWARE SELLS SUNDAY

- Pulls
- Lock & keys, latches
- Knobs
- Screws, bolts, nuts
- Nails including square
- Tacks, brads & nailers
- Furniture clamps
- Clamp assortment
- Step ladders
- Misc. electric testers including automotive, volt meters, etc.
- Central Machine wheel balancer
- Car ramps
- Misc. auto supplies
- Heavy duty, 2 handle dolly
- Old creeper

OLD WALNUT LUMBER; 8'X28" WIDE BOARD, STORE COUNTERTOP SELLS SUNDAY

HOUSEHOLD SELLS SUNDAY

- Knives, including Chicago Cutlery
- Corelle Ware "Abundance" assortment of plates, bowls, canisters, bakeware
- Glassware: goblets, tumblers, etc.
- Assorted pots & pans
- Lot assorted towels
- Christmas & holiday décor
- Royal upright vacuum
- Box women's scarves
- Stainless steel silverware set
- Modern baskets
- New greeting cards
- Misc. desk & office
- Cloth bags assortment
- Ironing board & iron
- Decorator candleholders, signs, frames, etc.
- Large set Pfaltzgraff heavy china table sets & accessory bowls, tureens, etc.
- Rug hooking, needlepoint, cross stich, crochet supplies & hoops
- Misc. boxes: wood, metal gift asst.
- Queen size, Tempur-Pedic mattress
- CD's & cassette tapes, mostly country western, 100+
- Metal, 4 drawer file cabinet
- Kitchen ware
- Lot bedding
- Afghan throws
- Vintage Electolux
- Costume jewelry
- Used books
- Lamps w/shades
- Meat paper roll
- Couch pillows
- TV tray set
- Coat hangers

MODERN FURNITURE SELLS SUNDAY

- Flex Steel swivel rocker
- 2 computer desks
- Small bookcase

STONEWARE SELLS SATURDAY



2 salt glazed, decorated jars, Bird & Stinger, 3 gal.



Various jugs & crocks plain

- Hand thrown brown, 2 gal. urn, Missouri
- Minnesota stoneware Blue Band jug
- Ovoid jug, blue decoration - 3 gal. crock
- Red Wing slip jug w/advertising - Weir Pottery jar
- Cobalt design water cooler, cracks & chips, converted to a lamp

ANTIQUe TOOLS SELL SATURDAY



Wooden rakes & pitchfork

- Squares & Stanley rulers
- Hay scale, scribes, calipers, etc.
- Wrenches, hand drills, hammers, etc.



Wood planes.

- Mallets - Hay knife
- Broad axe - Measures
- 2 man saws

KITCHEN & HOUSEHOLD PRIMITIVES SELL SATURDAY



Museum piece, "Woods" patented cast iron coffee roaster, 1849



Wooden butter mold



Assortment of brass & copper pots & pails



Tramp art sewing box

VINTAGE METAL SELLS SATURDAY



Feather tree stands

- Brass scoop
- Brass school bell



Washing stomper & dipper

- Hand wrought chain w/hooks
- Cast iron shoe last
- Commercial string holder
- Cast hat & coat racks
- Goat & calf shoes
- Street sign, Ann St.
- 12 & rare 24 count candle molds
- Old Feeney hand duster
- Early Monta mower, dated

SPINNING WHEELS SELL SATURDAY



Nice, early Norwegian spinning wheel, old blue paint & Early, upright design spinning/flax wheel

- Box spinning wheel parts

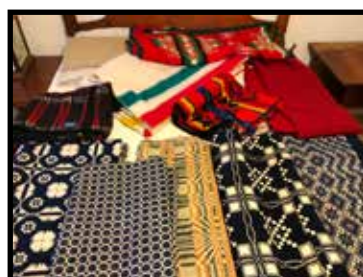
INDIAN ITEMS SELL SATURDAY

- Clay Navajo olla pots, large & small
- Assorted tapestries, New Mexico
- 2 arrowheads

VINTAGE TEXTILES SELL SATURDAY



10+ quilts: Stars, Double Stars, Dresden Plate, Double Wedding Ring, etc. all hand quilted



5 woven coverlets, early overshot blue & white, etc.

- Assorted woven & loom rugs: braided, rare leather runner
- Assorted Pendleton blankets
- Several wool blankets: Minnesota, Wisconsin, etc.
- 5 hooked rugs: pig, cat, etc.



Huge 12x9 braided, semi-oval rug, good shape

STAINED GLASS SELLS SATURDAY

- Teal & pink, leaded glass, some damage
- Contemporary pheasant portrait, Leeseburg

- Large framed, orange, gold, brown w/gems
- Small floral square



Cast iron sewing thread caddy in old paint



Hand carved squirrel inkstand



Hand carved folk art eagle from Missouri w/poly chrome paint, signed, museum piece



Modern folk art sculptures, pheasant & rooster

- Grasby Wisconsin stove top waffle iron, floral pattern
- Rare Cavanaugh lap top coffee grinder
- 2 Sinclair & Scott Hearts apple peelers
- Brass banded wooden churn
- Rare brass, key wind cooking spit, dated
- Grain Lithod round spice box w/individual spice tins
- Exceptional large and well-worn wooden dough bowl
- 2 rolling pins, "Fire" maple & Yellowware
- Assorted hand wrought choppers
- Old wooden spoons & stirrers
- Hand wrought, standing pot rack
- Brass grain scale
- Brass & pewter candlesticks

- Food molds, small irons, sad iron, cast juicer
- Wooden tool caddies
- Document boxes, walnut
- Burlled bowls and boxes
- Walnut shaving mirror w/towel rack, Missouri
- Pine bible box
- Carved fireplace bellows
- Assortment of canes & walking sticks
- Clock work yarn winder, rare form
- Folk art boxes, bowls, small carvings
- 5 wood framed writing slates
- Butternut folk art carving of a bear
- Folk art carvings of Old Men, Santas, Birds, etc. some newer & signed
- Roosevelt Bears lamp

LOCAL MEMORABILIA SELLS SATURDAY

- 1875 St. Charles County Plat Atlas
- 1905 St. Charles County Plat Atlas
- St. Charles County Reference books
- Charles Van Ravensway German Settlers of Missouri book
- St. Charles County advertising plates & bowls
- Warrenton, MO Binkley War Effort Letter, framed
- Postcards
- 1924 Missouri road map

ANTIQUe GLASSWARE & MISC SELLS SATURDAY

- Pink depression plate & cookie jar
- Oatmeal pattern clear platter w/silver band
- Sea coral bowl
- Green Anchor Hocking block glasses & tumblers
- Misc. clear glass jars & bottles, including East St. Louis, IL
- Kerosene lamps
- Skating & candle lamps
- 2 folk art lamps, 1960's carved ducks & wood
- Sterling silver flatware, teapot, bowl
- Lake Superior agates

HUMMEL FIGURINES SELL SATURDAY 18 Hummels, Old Hummels, Various Marks

ANTIQUe FURITURE – MOSTLY WALNUT & CHERRY SELLS SATURDAY



Walnut 2 piece step back cupboard, 12 panes original glass w/arched doors, Hermann, MO pc.



Walnut 2 piece secretary desk, carved front glass door top, Hermann or Drake MO origins



Large cherry blind door wardrobe, Weldon Springs, MO pc.



Walnut milk cupboard, St. Charles pc.



Walnut washstand, New Melle, MO pc.



Pine meal bin of rare build, in Old Red paint



Cherry Sheraton dresser, Indiana pc.



Walnut Whimsy table, Norwegian, Minnesota pc.



Rare walnut train station agents' desk, project, nearly complete



Cherry cannon ball, rope bed, queen size from Hermann, MO pc.



Large 5x5 square, walnut chair table, very early w/peg construction, St. Peters, MO River Lands



Walnut tapered leg, worktable, St. Charles pc.



Walnut bucket bench, Loose Springs, MO pc.



Pine and poplar church pew, small 4', Beaufort, MO pc.



Walnut pewter cupboard base, mortised construction, Indiana pc.



Cherry Hepplewhite, drop leaf table



Fine grain, painted heavy toolbox, w/drawers & trays, exceptional piece

- Accompanying trundle bed in Old Red paint from Palmyra, MO
- 8' wooden bench, mortise & tenon construction
- Rare walnut "Pool Hall" Windsor chair "one of a kind"

- Maple child's school desk
- Pine tool box in Old Red wash
- Walnut hanging small cupboard

- Walnut child's drop leaf table
- Early cherry Jelly cupboard, project
- Country store hat rack in Old Red paint

- Large walnut hanging cupboard
- 4 quality repro Windsor side chairs, custom made
- Restored buggy seat w/original cushioning
- Single repro Windsor side chair in Old Yellow paint



Framed U.S. Fur St. Louis, MO poster "Hunters and a Skunk"

BLACK MEMORABILIA SELLS SATURDAY

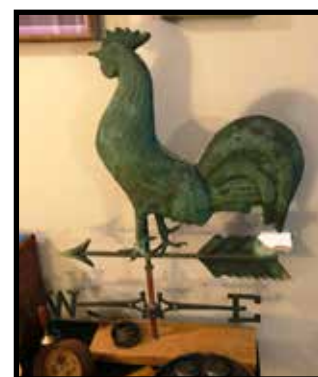
- McLoughlin Bros. "Simple Addition" rare counting book
- 2 Little Brown Koko books w/a scrap book
- Southern Pacific R.R. rare train station sign, reverse glass directions
- Mammy saltshaker and small figurine
- Repro Jigger Dance toy
- Ad card from Iowa, Little Black Sambo sentence cards

BASKET COLLECTION SELLS SATURDAY



- 30+ antique woven baskets, several from Missouri weavers: gizzard, buttocks, egg, gathering, apple, swing handle, etc. (including set of 3 from one maker)
- Pine needle camp, project
- Mini basket collection
- Rare flat-sided baskets
- 15 contemporary baskets as well
- Several pine needle baskets & bowls

WEATHERVANES SELL SATURDAY



Rare full bodied copper rooster with E/W directional, needs minor repair, very old



Full bodied copper cow 1900's

COLLECTIBLES SELL SATURDAY

- Old magazines: Colliers, Saturday Evening Post, Time
- Vintage St. Louis & Jefferson City papers
- Lot postcards
- Lot St. Louis & Missouri advertisers
- Missouri railroad map
- 1961 Minnesota Rose Bowl Parade pennant, rare item
- Other antiques & primitives to numerous to mention

MUSICAL INSTRUMENTS SELL SATURDAY



1925 Bacon banjo Ukulele, all original, neat piece & 1940's Slingerland snare marcher's drum, wood sides. VGC

REFERENCE BOOKS SELL SATURDAY

Several boxes of antique reference books, 1970's to current, all subjects