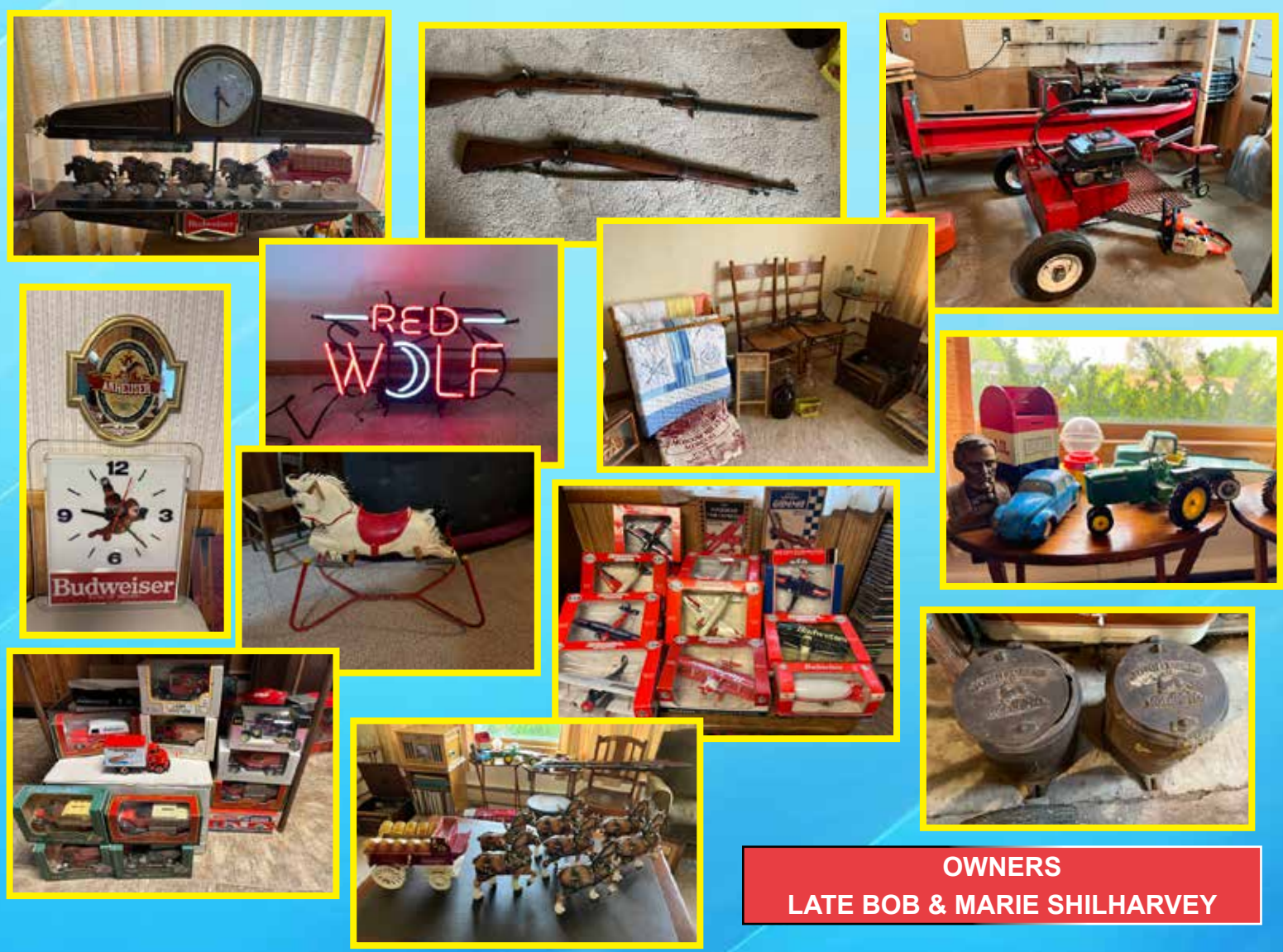


**SUNDAY JUNE 5, 2022**  
**BEGINNING AT 10:30 A.M.**  
**DOORS OPEN AT 9:00 A.M.**



**OWNERS**  
**LATE BOB & MARIE SHILHARVEY**

**AUCTIONEERS:**



**DAVID THORNHILL**  
Troy, MO  
**DUSTY THORNHILL**  
Troy, MO  
**BILL UNSELL**  
Frankford, MO



On any item purchased through our auctions, we are not experts on description or authenticity of item, buyers, it is your decision to purchase item as it appears day of auction.

**Troy Office: 636-366-4206.**  
**For Full Listing, visit**  
**www.thornhillauction.com**



Lunch will be served. All buyers will be photographed. Terms: Cash or Good Check with Current Photo I.D. Out of State Photo I.D.s and Out of State Checks must be accompanied with a Bank Letter of Credit, call for details. We do not accept Cashier Checks. Items sold with no warranty. They stand sold AS IS. Owner & Auction personnel not responsible for accidents day of sale! Announcements made day of sale take precedence over any advertisement!  
 David Thornhill - 314-393-7241 Dusty Thornhill - 314-393-4726 Bill Unsell - 573-470-0037  
 Troy Office: 636-366-4206 For full listing & terms of this auction - www.thornhillauction.com

**THORNHILL**  
**59th**  
**YEAR IN BUSINESS**  
**AUCTION**  
**& REAL ESTATE COMPANY**

We will sell the following personal property of the Late Bob & Marie Shilharvey at Public Auction on:

**SUNDAY JUNE 5, 2022**  
**BEGINNING AT 10:30 A.M.**  
**DOORS OPEN AT 9:00 A.M.**

**SALE SITE:** Thornhill Auction Barn; 421 John Deere Drive; Troy, MO 63379  
**DIRECTIONS:** From Troy, MO go south on Hwy 61 to Moscow Mills Hwy C Exit. Go east on Hwy C to first stoplight, turn left on John Deere Drive (by Bank of Old Monroe) and go approximately 1 mile to sale on right, next door to Thornhill Real Estate Office.

Note: Sale will be held indoors in case of bad weather.



**OWNERS**  
**LATE BOB & MARIE SHILHARVEY**

**AUCTIONEERS NOTE:** Bob & Marie were married 64 years & lived in Warrenton. Marie's maiden name was Pietzman, she was raised in Moscow Mills. Bob was 96, he was a WW II Veteran & a carpenter by trade. Their son Mike worked for Anheuser Busch for 35 years, this is a lifetime collection of beer & bar memorabilia. Bob's AC tractor was a crowd pleaser in the Warren County parades. See you at the sale, David, Dusty & Bill

*Celebrating 59 Years In Business*



**COLLECTOR TRACTOR SELLS AT 1:00 PM**



*Late 1940s Allis Chalmers WD tractor with tri front end, restored complete tear down, parade ready*

**FIREARMS SELL AT 12:00 NOON**



- Winchester Woodmaster Model 742, 30-06 with Leupold scope SN 261446
- US Rock Island Arsenal 1903 Infield rifle SN 293328
- Carbine Japanese rifle w/bayonet SN 600882
- Red Ryder Model 94 carbine BB gun

**ALL FFL LAWS APPLY. ALL OUT OF STATE FIRE-ARM BUYERS MUST PRESENT A CURRENT FFL LICENSE. NO EXCEPTIONS**

*To be sold for the Late Gilbert Pieper*

**TRACTOR, LOADER & FARM EQUIPMENT SELL AT 1:00 PM**



*John Deere 4010 diesel tractor with wide front end, 3 pt. hitch, single hydraulics, canopy, 16.9-34 tires sell with Koyker 510 hydraulic front end loader with 7' bucket, shows 7770 hours*



*John Deere MX10, 10' pull type brush hog, solid tires with chains, bought new in '05, like new*

- 3 pt. H/D 8' adjustable blade
- Ford 2 bottom plow 3 pt. model 10-158
- 3 pt. homemade big bale fork

**SHOP & WOOD WORKING TOOLS**

- Lincoln AC 225 amp welder
- Craftsman radial arm saw
- Craftsman 10" ½ hp drill press, bench type
- Craftsman 6 hp shop vac
- Craftsman table saw
- Acetylene set
- Bench vise
- Skill miter saw
- Powermatic scroll saw
- Lot power tools, saws, drills, etc.
- Lot carpenter tools
- Skill 6" B&D bench grinder
- Shop lights
- Lot wrenches
- Air tank
- Crow bars
- Soldering, stove, pot, ladle

**WOOD SPLITTER & CHAINSAW**



*20 ton wood splitter 5hp trailer type, nice*

- Stihl 032 AV chain saw

**BIKES**

- Klicker Jet 1960s girls' bike
- Roadmaster 1960s mans' bike

**LAWN & GARDEN**

- Bolens 3 hp 22" snow blower
- Precision garden planter
- Aluminum scoop shovel
- Earth way seeder
- Shovels, forks, hoes, axes, post hole digger, etc.
- Ladders

**STEREO & RECORDS**

- 1960s Pioneer stereo w/speakers
- 1960s GE console stereo
- 1930s GE record player
- Large lot vinyl records
- Grosley stereo repo

**KUBOTA RTV SELLS AT 1:00 PM**



*2017 Kubota RTV, X1140W, power steering, VHT-X variable hydro transmission, 4x4, windshield, extra duty independent rear suspension, 2nd row seating w/extra large cargo bed, shows 410 miles, like new, adult driven, one owner*

**PFAFF SEWING MACHINE IN CABINET**

**RODS, REELS, MISC. TACKLE**



## BEER STEIN COLLECTION

- Louie Frank Stein, 4
- Holiday Steins: 1983, 1985, 1986, 1987, 1988, 1990, 1991, 1992, 1995, 1998, 1999, 2001, 2003(2), 2005, 2008, 2009, 2010, 2011, 2013, 2014
- Inaugural Season Dale Jr. 2000
- Adolphus Busch
- August Busch Sr
- Adolphus Busch III, 2
- August Busch Jr., 2
- August Busch III, 3
- August Busch IV, 6
- Label Stein 1891-1908-1917-1918 & 1920-1933-1934-1939
- 25th Anniversary Clydesdale, 3
- 75th Anniversary Clydesdale
- St. Patrick's Day: 1997, 2004, 2007
- Dale Jr.: 2002
- Call of the Wild: Mountain Lion & Grizzly
- Upland Game Wild Turkey, 3
- Olympic, 1988
- 50th Anniversary Nascar
- Clydesdale Parade Dress
- Clydesdale Mare & Foal
- Holiday Stein lidded, 1993
- Winter Olympics, 1988
- Bud Salutes: Grid Iron Legacy, Heroes of Hardwood, Par For The Course, Center Ice, Favorite Pastime, & Chasing The Cherished Flag
- Upland Game Birds Prairie Chicken
- Ducks Unlimited Mississippi Flyway, 2
- Bud Discover America Santa Maria, Nina & Pinta
- American Originals Faust, 2
- Wake Up To Missouri, 1991
- 50th Anniversary Clydesdale 1933-1983, 2
- Holiday 1st of Series, 1981
- Wheat & Hops
- 50th Anniversary Nascar
- Endangered Species: Gorilla, Cougar, Grizzly
- Animals of the Prairie: Mustang
- Bud helmet bank, 2
- Bud Light helmet bank, 2
- A & E Mariner Conservation: Great White, Dolphin, Manatee
- Tin & Stein "When Gentlemen Agree"
- Grey Eagle Boot, 1994
- Bud Light Baron, 2
- Bud Evolution of Label: 1891-1908, 1917-1918, 4
- Legacy of Quality Busch IV, 4
- Post Convention: Adolphus III (6), August Busch (2), August Busch Sr. (4), Adolphus Busch
- Clydesdale Horseshoe
- Advertising Thru Ages 3rd in Series
- Michelob 100th Anniversary
- Advertising 4th in Series
- San Fran & LA Olympic, 6

## BEER SIGNS & ADVERTISING



*Budweiser hanging Clydesdale spectacular*



*Red Wolf neon*



*Bud guitar neon*



*Michelob Classic dark mirror*



*Custer's Last Stand*



*Clydesdale hitch*



*60s Bud rotating clock*



*Bud man clock*



*Budweiser mirror*

- Budweiser light mirror
- Bud Dry mirrors
- Bud license holder
- Bud Light baron mirror
- Anheuser mirror
- Bud American Ale sign
- Bud on draught tin

- Bud framed frog
- Killarney's neon
- Rotating pocket watch clock
- Michelob mirror

## 10 BEAM VINTAGE CAR DECANTORS



## RACING

- Bud Pit Stop Scene, 2
- 1994 Chevy Suburban Inaugural Brickyard with stein
- Back on Track (Salute to Legend) #8 black
- 2007 Dale Jr. Stars & Stripes, 2
- 50th Anniversary (Red #50) Racing Champs
- 1:18 American Muscle Bud #50 1998 Monte Carlo, 2
- 1:24 #50 Bud Stock car rep
- Dale Jr. Dave Matthews race car
- Dale Jr. Choice of Champs car
- Dale Jr. white #8
- Dale Jr. camo #8

## TURKEY DECANTORS



## 12 BVP BOWL FOOTBALLS



**COLLECTORS TOYS**



*Texaco toy truck*



*1960s Hi-Prancer child's spring horse*



*John Deere tractor*



*Erector set, complete w/box*



*Tonka: jeep, concrete truck, dozer*

- Cast iron toy cars
- ERTL truck line toy truck
- Farmall 404 tractor
- Fighting Eagle by Marx w/box
- Hasbro Amaze-A-Matics w/box
- 4-On-The-Floor-Funny car drag strip

- Farm Implement
- US mail bank
- Ball gloves
- Marbles
- Child's wagon

**ANTIQUES & COLLECTIBLES**



*2 Quilts*

- 3 school desks, 1 bench type
- Slat back rocker
- Oak kitchen chairs
- Armed oak side chair
- Split hickory baskets, 2 Longaberger 1989 & 1991
- Split hickory baskets by John B. Wilson 1993
- 6 wooden fold up chairs
- Monroe early adding machine
- 2 barrel type bar stools 1960s
- Galvanized washtub, bucket, water can
- Hand corn planter
- Lot license plates
- Burroughs adding machine advertising box
- Cardboard Falstaff, Stag, & G-B beer boxes & bottles



*RR lantern, red globe*



*2 early John Deere corn planter boxes*

- Oil lamps
- Childs rocker
- Highchair
- Jugs
- Blue jars
- Sugar jar
- Ammo box
- Cross cut saw
- Single trees
- Soda crates
- Coal oil stove
- Wood planes

**COLLECTOR CAR & TRUCK BANKS**

- 1932 Ford Panel Delivery
- 1938 Bud Panel Barley Malt
- 1931 Hawkeye Bud Crate
- 1952 GMC Dry Goods Van, 2
- 1991 Tractor/Trailer Bud Clydesdale, 2
- 1950 Bud Panel Truck Horseshoer
- 1931 A-B Delivery
- 1951 A-B/Bud Delivery van
- 1926 Mack Crate
- Trolley car
- 1923 truck
- 1931 A-B Bud Stake truck
- 1932 Ford panel A-B Yeast
- 1905 Delivery A-B Bud car
- 1936 Dodge Panel delivery
- 1932 Ford Bud (Speccast)
- 1930 A & Eagle Delivery, 2
- 1957 Chevy "Task Force" truck (Speccast)
- 1949 Mercury Custom (Bud Logo)
- 1947 Studebaker pickup
- Model "A" Tanker (Amoco Logo)
- 1998 Monte Carlo #50, 2
- 1957 Chevy "Task Force" Stake truck, 2
- 1936 Ford Panel A-B Yeast



**COLLECTOR PLANES**

- Bud 1936 DC-3
- Bud Light 1935 DC-3
- Bud F4U-1 Corsair (Louie & Lizard)
- Bud Light Twin Beech 18, 2
- Bud Ford Tri Motor
- 1929 Lockheed Air Express A-B, 2
- Bud P-51D Mustang
- Red Wolf P-51D Mustang
- 1932 Northrup Gamma, 2
- Budweiser Airship, 2
- 1932 Stearman Bi-Plane, 2
- Budweiser P-51D Mustang
- Beechcraft D17 Bud Light



**PLATES**



- Something Brewing, 3
- Buddies, 2
- Outstanding in their Fields, 2
- Winter's Day
- Six Pack
- American Tradition (Clydesdale)