

**MOUNTS**



Antelope mount



Wild Boar mount



Ram mount



Javelina mount



Whitetail mounts

- Bear rug

**HOUSEHOLD & MISC.**



Rocker recliner, like new



Oak 3 in 1 game table w/adjustable set of 4 oak chairs w/golf pattern, super nice set



Vissani 52 bottle wine cooler

**COMMERCIAL SEWING MACHINE W/TABLE**



**OAK CASE GRANDFATHER CLOCK-BEAUTIFUL CASE NEEDS CLOCK WORK**



2, 3-tier lamp tables



Antique oak treadle sewing machine (Henrietta)



3 Tier water fountain



Brass propellers

- Hall table w/glass top
- Oak end table
- Kitchenaid mixer, new in box
- 2 sets table lamps

- 2 side tables
- Gas logs
- Misc.

**AUCTIONEERS:**



DAVID THORNHILL  
Troy, MO



DUSTY THORNHILL  
Troy, MO



BILL UNSELL  
Frankford, MO



On any item purchased through our auctions, we are not experts on description or authenticity of item, buyers, it is your decision to purchase item as it appears day of auction.

**Troy Office: 636-366-4206.**

**For Full Listing, visit  
www.thornhillauction.com**



Lunch will be served. All buyers will be photographed. Terms: Cash or Good Check with Current Photo I.D. Out of State Photo I.D.s and Out of State Checks must be accompanied with a Bank Letter of Credit, call for details. We do not accept Cashier Checks. Items sold with no warranty. They stand sold AS IS. Owner & Auction personnel not responsible for accidents day of sale! Announcements made day of sale take precedence over any advertisement!

David Thornhill - 314-393-7241 Dusty Thornhill - 314-393-4726 Bill Unsell - 573-470-0037  
Troy Office: 636-366-4206 For full listing & terms of this auction - www.thornhillauction.com

# THORNHILL AUCTION & REAL ESTATE COMPANY

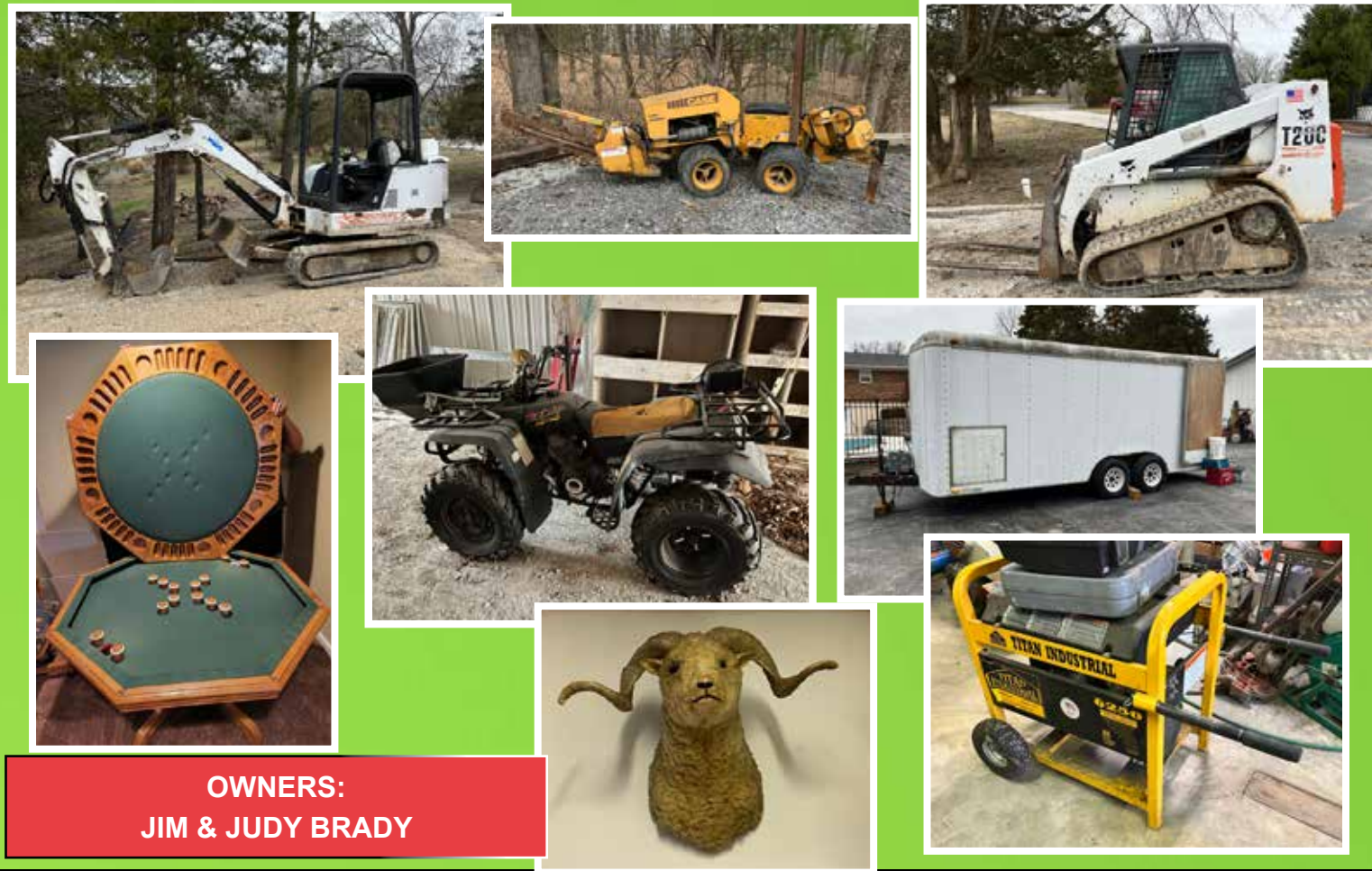
60th YEAR IN BUSINESS

Having sold our home & moved to our retirement home in Florida, we will sell all the following at Public Auction on:

**SATURDAY APRIL 8, 2023  
BEGINNING AT 9:30 A.M.**

SALE SITE: Thornhill Auction Barn; 421 John Deere Drive; Troy, MO 63379

DIRECTIONS: From Troy, MO go south on Hwy 61 to Moscow Mills Hwy C Exit. Go east on Hwy C to first stoplight, turn left on John Deere Drive (by Bank of Old Monroe) and go approximately 1 mile to sale on right, next door to Thornhill Real Estate Office.



**OWNERS:  
JIM & JUDY BRADY**

AUCTIONEERS NOTE: Jim has a good line of equipment to sell along with his tools. He was a brick mason by trade but could do about any job from electric to heat & cooling to remodeling. See you at the sale. David, Dusty & Bill.

*Celebrating 60 Years In Business*



### TRACK HOE



Bobcat X331 diesel track hoe, rubber tracks, good machine  
- 2 track hoe buckets 1 & 2 ft.

### SKID LOADER



Bobcat T200 turbo diesel w/ cab & rubber tracks, foot operated, good machine



2 buckets, 1 6 1/2 ft. w/teeth

- 7ft. plow blade
- 12 ft. gin pole
- Bob Cat #20 post hole digger

### SHOP TOOLS



Lincoln electric welder



Titan Industrial 6250 electric generator



Titan Industrial air compressor 5 hp, nice unit



Acetylene set w/ cart

### TRENCHER



Case Maxi Sneaker gas trencher, puller, borer – 2600 hrs. good unit

### TRAILERS



2002 18 ft. Trailer H/D tandem axle trailer w/ramps, 16 ply tires & ball hitch



1991 20 ft. Bropes box trailer



18 ft. box type job site trailer w/generator

### 4-WHEELER



Big Bear 4 x 4, 350 4-wheeler with front mount spreader

### GILSON 8 HP REAR TINE TILLER



### LOT FISHING TACKLE, RODS, REELS, ETC.



### RYAN MATAWAY OVERSEEDER MODEL OMC 4130 POWER WALK BEHIND



### LADDERS, WALKBOARDS & SCAFFOLDING



2 Aluminum walk boards approx. 30 ft.



Lot brick scaffolding

- Lot Louisville ext. ladders up to 30 ft.
- H/D 20' step ladder
- Husky 7 & 8 ft. step ladders

### SIDING METAL BRAKE



### KEWANEE 8 FT. BED, METAL BRAKE FLOOR MODEL ON ROLLERS



### SAW DEVIL MASONRY SAW



Thermal-Arc AC/DC welding generator



Sand blaster floor model



Drywall screw gun



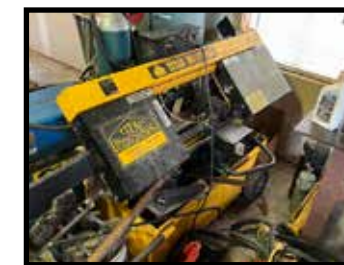
Milwaukee right angle drill



Hardware bins



Stihl weed eater



Titan H/D Industrial portable power band saw



Large lot power tools



Kasco De-Icers F-2400



Pipe wrenches



Concrete bull floats

- Millermatic 250VC-DC welding source wire feed
- 5500 lb. pallet jack
- Homelite XL-98D, 14" concrete saw
- Shop fan
- Welding table
- Galvanized hand crank lift
- Coffin hoist
- Portable sand blaster
- Craftsman tool chest
- Ridgid pipe stand
- Welding torch & lead
- Diltile wet-dry tile saw
- Portable work tables
- Bottle jacks
- Senco 14.4V duraspin drywall screw gun
- Sears 2hp router
- Drywall steps
- Air hose & reel
- Pipe bender
- Lot air tools, jack hammers & bits

- Tiller
- Sump pumps
- Lot concrete tools
- Load binders
- Saw horses
- Craftsman 4x6" belt sander
- Aluminum Reese hitch
- Lot work tables
- Lot hardware
- Lot electric supplies
- Lot plumbing supplies
- Lot brass fittings
- Lot 2" water hose
- Partial list – Jim had loaded a 20ft. box trailer full of tools, concrete & brick, heat & cooling tools that are not on this list.



Ridgid pipe threader, up to 2"