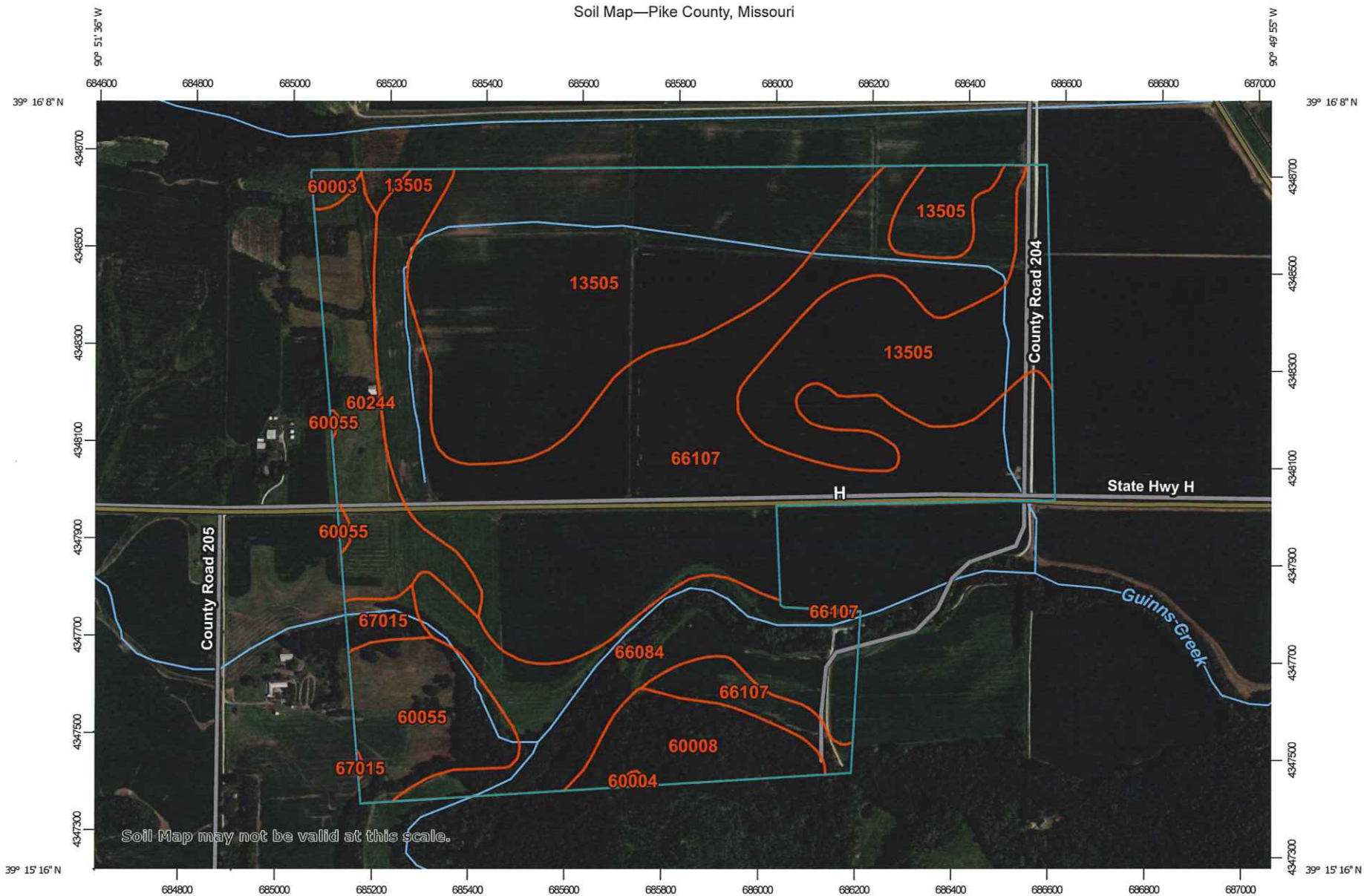


Soil Map—Pike County, Missouri



Map Scale: 1:11,100 if printed on A landscape (11" x 8.5") sheet.

0 150 300 600 900 Meters

0 500 1000 2000 3000 Feet

Map projection: Web Mercator Corner coordinates: WGS84 Edge tics: UTM Zone 15N WGS84

Map Unit Legend

Map Unit Symbol	Map Unit Name	Acres in AOI	Percent of AOI
13505	Blackoak silt loam, 0 to 2 percent slopes, occasionally flooded	142.3	35.3%
60003	Menfro silt loam, 9 to 14 percent slopes, eroded	1.5	0.4%
60004	Menfro silt loam, 14 to 20 percent slopes, eroded	0.3	0.1%
60008	Menfro silt loam, 20 to 45 percent slopes	16.8	4.2%
60055	Winfield silt loam, 2 to 5 percent slopes	21.6	5.4%
60244	Winfield silt loam, 5 to 10 percent slopes, eroded	27.4	6.8%
66084	Dupo silt loam, 0 to 2 percent slopes, occasionally flooded	44.5	11.1%
66107	Tice silt loam, 0 to 2 percent slopes, occasionally flooded	144.6	35.9%
67015	Belknap silt loam, 1 to 3 percent slopes, frequently flooded	3.7	0.9%
Totals for Area of Interest		402.6	100.0%