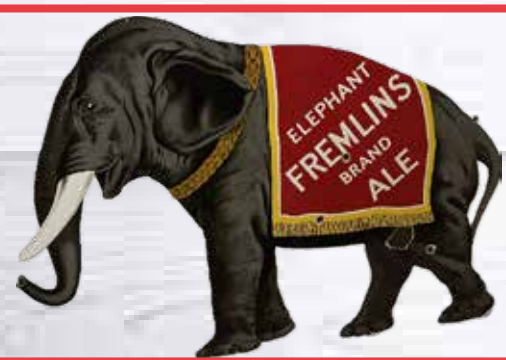


SATURDAY MARCH 2, 2024

BEGINNING AT 9:45 A.M.

DOORS OPEN AT 8:00 A.M.



**AUCTION PREVIEW
MARCH 1, 2024
3:00 - 6:00 P.M.**

THORNHILL AUCTION & REAL ESTATE COMPANY



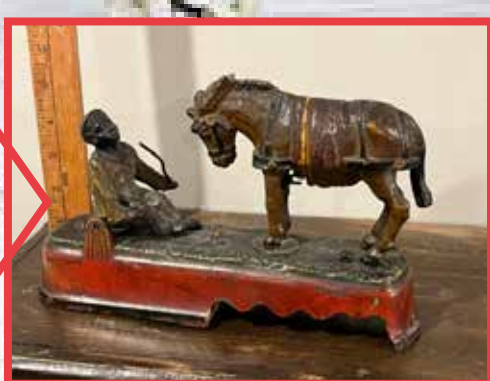
**SATURDAY MARCH 2, 2024
BEGINNING AT 9:45 A.M.
DOORS OPEN AT 8:00 A.M.**

SALE SITE: Thornhill Auction Barn; 421 John Deere Drive; Troy, MO 63379
DIRECTIONS: From Troy, MO go south on Hwy 61 to Moscow Mills Hwy C Exit. Go east on Hwy C to first stoplight, turn left on John Deere Drive (by Bank of Old Monroe) and go approximately 1 mile to sale on right, next door to Thornhill Real Estate Office.

Note: Sale will be held indoors with heat and seating.



**AUCTION PREVIEW
MARCH 1, 2024
3:00 - 6:00 P.M.**



AUCTIONEERS:


DAVID THORNHILL
Troy, MO


DUSTY THORNHILL
Troy, MO

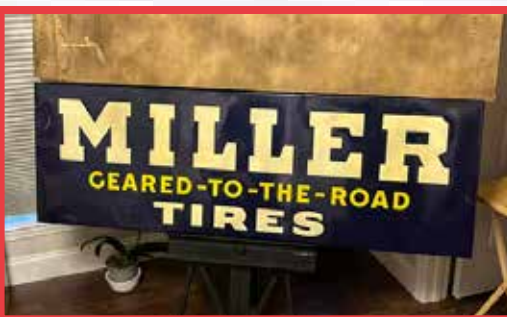

BILL UNSSELL
Frankford, MO




On any item purchased through our auctions, we are not experts on description or authenticity of item, buyers, it is your decision to purchase item as it appears day of auction.

Troy Office: 636-366-4206.
For Full Listing, visit
www.thornhillauction.com

Lunch will be served. All buyers will be photographed. Terms: Cash or Good Check with Current Photo I.D. Out of State Photo I.D.s and Out of State Checks must be accompanied with a Bank Letter of Credit, call for details. We do not accept Cashier Checks. Items sold with no warranty. They stand sold AS IS. Owner & Auction personnel not responsible for accidents day of sale! Announcements made day of sale take precedence over any advertisement!
David Thornhill - 314-393-7241 Dusty Thornhill - 314-393-4726 Bill Unsell - 573-470-0037
Troy Office: 636-366-4206 For full listing & terms of this auction - www.thornhillauction.com



AUCTIONEERS NOTE: Folks, we are privileged to be able to bring to you one of the best antique auctions we have had in a while. All from one private collection. This auction has a fantastic, fresh to market selection of just about anything a person can collect. Original Advertising, Gas & Oil, Automotive, Soda, Country Store, Stain Glass, Victorian, Antique Car Pedal Cars, Bicycles, Architectural Salvage & lot of cool smalls. There are more items than what is listed, something for everyone. See you at the sale. David, Dusty & Bill

Celebrating 60 Years In Business

SELLER NOTE: I am offering up for auction my personal collection, I spent many years accumulating these items through various swap meets & flea markets in and around different parts of the country during my travels. I hope the next owners will cherish & preserve these items like I have.

CHEVROLET STYLELINE



1951 Chevrolet 2 door Deluxe Styleline Bel Air hardtop, Style No. 51 1037

ARCADE GAME



1980's Gyruss stand up arcade updated with 60 1980's games

ANTIQUE RADIOS

- 1957 Blaupunkt Granada with "green tuning eye" radio, working condition
- Zenith transoceanic radio, working condition

COIN OP



- Stamp machine
- 1 cent strength machine
- Sparky trade stimulator 5 cent machine
- Match book 1 cent machine
- Hershey's 1 cent chocolate machine
- Peanuts 1 cent machine
- Peanut w/warmer 5 cent machine
- 1 cent fortune teller napkin holder
- Ko-Pak-Ta toasted peanuts 5 cent motion lamp

ANTIQUE POCKET WATCHES



South Bend 14kt gold filled 12 size 21 jewel Studebaker pocket watch circa 1925 SN 6440489 (movement stamped "Studebaker")

- Waltham Mass Size 16s, 15 jewel SN 16924606, grad: 620 circa 1908 in Dueber 10K gold filled case gifted in 1912

ARCHITECTURAL SALVAGE



22" x 9' Beautiful Victorian stain glass

- 31" x 24" 1940's post office eagle aluminum
- Barn copula with copper roof
- Victorian iron chandeliers converted to electric
- Heavy Iron Victorian fireplace insert
- Post office box section



- Cookie jars
- Tin litho toys
- Victorian mirrors
- Old framed pictures
- Autograph books
- Railroad lanterns
- Victorian hair receiver
- Victor table top record player
- Edison cylinders
- Furniture
- Cut glass
- Clock toppers
- Soap box
- Pocket watches
- Children's toy pull wagon
- Copper kettle
- 1960's whirly bird toy helicopter with box
- Toolbox with hand crafted copper applications
- Lots of 78 records featuring (Les Brown, Stan Kenton, Ink Spots with Ella Fitzgerald, Guy Lombardo, Leo Reisman) to name a few

ANTIQUE POPCORN MACHINE



1929 Creators floor model popcorn & peanut roaster - unrestored original

ANTIQUES & COLLECTABLES



BICYCLES & PARTS



- 1950's Firestone Monarch bicycle, nice original
- 1940's Hawthorne bicycle, nice original
- N.O.S. bicycle pedals
- Vintage bicycle lights
- Vintage bicycle horns
- Old English sidewalk bike
- N.O.S. bicycle siren
- Bicycle safety mirror with original box
- Early bicycle - motorcycle horn

ANTIQUe ADVERTISING OTHER

- Late 1950's Donkey Horn countertop display
- CD-2 countertop display featuring Mickey Rooney, N.O.S. w/original box
- Early milk glass globe featuring pointing hand
- Early milk glass standard flame sign topper globe
- Pearl beer light up
- Pabst Blue Ribbon light up
- STHL motion display
- Genesee Beer & Ale light up
- Bardahl counter top display
- CR seals hanging shelf
- AC spark plugs gaskets counter top display
- 1950's sputnik round red ball approx. 24" dia. flashing light display mainly used on diners and other businesses to attract customers
- Lipe Clutches reverse painted glass countertop light up
- Carter carburetor shelf



ANTIQUe ADVERTISING BANNERS

- 47" x 41" Mobil Tires Banner Cloth
- 34" x 55" 1941 Quaker State Banner winter snow
- 35" x 24" Zerone Anti-freeze cloth banner
- 42½" x approx. 20 ft. 1956 Chevrolet dealer banner
- 55" x 34" Kendall banner
- 42½" x 24 ft. 1949 Studebaker trucks
- 3' x 5' Chevrolet accessories banner
- 38"x10' Pure gas pole banner



BLACK AMERICANA



Virginia ceramic jug featuring polychrome medallion on Virginia State seal with Figural African American head stopper marked sterling with makers mark "blue printed crown and interlaced TTC" Circa 1900



Always did "Spise a mule" early mechanical bank with original paint, works great, J.E. Stevens of Connecticut circa 1889



Key wind Jazzbo Jim tin litho circa 1920's



"Amos" key wind tin litho, mint condition, works circa 1930

- Unmarked Bisque black boy head with green hat, humidor jar
- Large black woman head bust Berlin majolica humidor
- Black boy bobble head tip tray
- Berlin majolica Mammy and Uncle Tom humidor
- Black mammy iron soap holder
- Black head salt & pepper shakers



ANTIQUe ADVERTISING THERMOMETERS



- Qty (2), 12" dia. TV radio service
- 12" dia. Pure Oil one fill
- 12" dia. Casite
- 36x8 Prestone thermometer
- 14½ x 5 ¼ Nesbitt's thermometer plastic
- 25½ x 9¾ Barg's thermometer SST
- 21 x 8¾ Ramon's Pills Laxative SST thermometer
- 18 x 10¼ Pabst Blue Ribbon SST thermometer

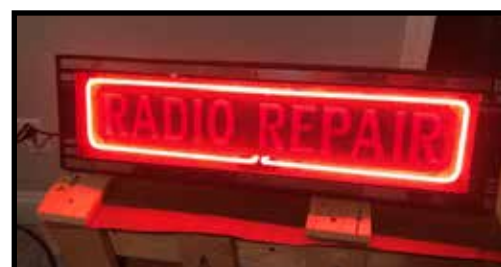
ELECTRIC ADVERTISING CLOCKS



- Frostie root beer
- Sealtest ice cream
- Nugrape
- Royal Crown Cola
- ICEE freeze
- Qty (2), Dr. Pepper
- Morton's Potato Chips
- Hoe Supply Co.
- Sun crest
- Tuffy wire rope circa 1956
- Pard dog food
- Old Mr. Boston bottle shaped clock
- Hamms cash register clock
- 1955 Chevrolet dealer clock with rotating drum



NEON ITEMS



- Radio Repair
- Glodial Used Cars
- Admiral Radio - Refrigerators
- Admiral Radio - Phonographs
- Dr. Gibbs shoes
- Bud light
- 6'x3' Arnold Funeral Home
- Art Deco 6 sided clock with inner and outer neon
- 1930's cathedral rotating drum advertising neon clock

ANTIQUE AUTO RELATED



- 1934 Ford truck grill
- Oil cans
- Antique hood ornaments
- 1920's Steel craft pedal car
- 1930's Garton (nice, original)
- Gas station bathroom Boraxo soap dispenser
- Vintage auto turn signal markers
- 1920's dash mount auto clock rim wind
- 1920's dash mount auto clock marked Ansonia
- Motometer with eagle and wings
- Funeral Car mount with lights
- 50+ pieces of N.O.S. GM auto parts
- 1950's retractable top ford car, battery operated N.O.S. in box
- 1960's Thunderbird battery operated toy car N.O.S. in box
- Structo school bus with box
- Nylent Kennel truck with animals and original box
- Brake (stop)light collection (many are embossed with "stop" in the glass, some are marked the car make)



TOBACCO

- Chinese head humidor continental circa 1900
- Qty (2), Indian head humidor
- Indian in a boat nodder
- Sitting dog with rocking head nodder
- Indian head cigar bust countertop
- N.O.S. Blackhawk cigar countertop display



BB GUNS

- Selection of BB guns in various states of condition

ANTIQUE FURNITURE

- Antique tables
- Very nice 1920's 3 piece bedroom set
- Curved glass china hutch with mirror

ADVERTISING SIGNS



TAG TOPPERS APPROX. 45



- Pays to buy a fine car (Chrysler)
- Salley and CO Dodge and Plymouth
- Goodrich Silverton Safety
- Drink Smile
- Atlantic white flash
- Win With Willkie
- Hoover for President
- Wilson Tobacco Market
- Double duty motor oil
- Hulberts racine
- Mohawk Rugs and capets (porcelain)
- Pledged to Purol Pep Drive Safely
- Clover Farm Stores (porcelain)
- Cherokee Indian Fair
- Drive Safely Farm Bureau
- Knights of Pythias
- Willkie for president
- Pull with USA (WWII)
- Drive safely Skelly
- Penn City motor oil
- National defense worker
- Westinghouse (porcelain)
- Kendall (2 fingers)



- Drink Zesto
- Berkshires (pig)
- Phillips 66
- Cat moving eyes
- Blackhawk coop (Indian)
- Long may it wave (flag)
- Victory (WWII)
- Standard Research Test car
- Globe scratch feed (Porcelain)
- Marathon (running man)
- UMWA
- American Flag (48 star)
- Drive safely (liquor bottle)
- Safety pays (fleetwing)
- God Bless America (48 star flag)
- Blue Cross
- Police Sheriffs assoc.
- RX
- Drive safely (Crown central)
- White rose motor oil
- Safety club republic
- GW York Co (dog on top)



ANTIQUE KEY WOUND CLOCKS



Huge French ornate clock circa 1890-1910

- Pressed oak mantle clock with dolphins
- Beautiful heavily embossed oak kitchen clock with celluloid women portrait pendulum
- Gilbert parlor clock
- More clocks not listed



ADVERTISING SIGNS

(Abbreviations: double sided porcelain = DSP, single sided porcelain = SSP, single sided tin = SST, double sided tin = DST, New old stock = N.O.S.)

- N.O.S. 5' x 7' DSP standard sign, circa 1960 (pictured in custom crate for protection will be removed for preview)
- N.O.S. 60" x 20" Miller Tires SST horizontal wood frame embossed w/original box, circa 1940's
- N.O.S. 72" x 17 1/4" Miller Tires wood frame SST vertical embossed w/original box, circa 1940's
- 4' x 6' Elephant SSP Fremlins Brand Ale
- 28 1/2 x 22 1/2 Approved Clean Restrooms SSP embossed
- 11 x 15 Stop Motor No Smoking DSP flange sign
- 36 x 9 3/4 Early Kraeuter Quality Tools pliers SST litho made by American Art Works
- 22 3/4 x 15 Standard attendant head bust Masonite
- 60 x 18 Zenith vertical radio SSP
- 35 x 5 Raybestos fan belts radiator hoses SST hanger
- Qty (2), 22 x 12 drive carefully mirrors
- 6 7/8 x 19 5/8 Drink Virginia Dare soda SST embossed
- 28 x 22 Veedol motor oil cardboard litho dog
- 70 1/2 x 18 1/2 Delco Sunlight motors SST embossed with wood frame
- 23 1/2 x 17 5/8 American Brakeblock SST embossed w/stopper the dog
- 18 x 14 RCA Electron tubes DST flange
- 18 x 13 3/4 Octagon Coupons DSP flange
- 29 3/4 x 24 Lion natural lube DST
- 23 7/8 x 36 FrigiKing Sales and service DSP
- 29 3/8 x 17 1/2 Napa Gaskets SST
- 9 x 12 Car Wash SST 75 cents
- 11 1/4 x 10 3/4 N.O.S. public telephone DSP Flange
- 14 1/4 x 9 1/2 Esso pricer German Masonite
- 13 3/4 x 27 N.O.S. Bireleys SST embossed circa 1938
- 11 x 19 Rainbo bread N.O.S. w/crate SST embossed
- 14 x 18 ESSO credit cards DSP pole sign w/original brackets
- 19 x 17 Bakery Dept rack topper DST embossed
- 18 1/2 dia. wood watchmaker trade sign, early
- 18 1/4 x 14 Zenith Auto radio DST flange
- 9 3/4 x 28 1/4 Coke fountain service Masonite
- 12 x 24 76 Soft drink SST
- 20 x 17 DSP Apartments for rent
- 20 x 29 7/8 Lambretta Motor Scooters SST embossed
- 10 x 17 1/2 Rainbo bread picture



- 54 1/2 x 16 1/4 6 pack Coke Pilster sign SST
- 60 x 15 SSP Wills's "Star" cigarettes
- 23 3/4 x 23 3/4 embossed stop sign
- 70 1/4 x 57 5/8 7up bottle sign, wood frame SST
- 60 x 36 Economy Auto Stores SSP
- 21 x 9 1/2 Cities Service Batt Cables
- 60 x 15 SSP Captain navy cut Tobacco
- 44 x 28 save gas red crown gasoline snapping fingers poster framed
- 23 3/8 x 6 DSP Stop your motor
- 48 x 96 Desoto - Plymouth SSP NEON skin
- Qty (2), 24 x 12 DSP gas pricer
- 6 x 24 DSP gas pricer
- 28 1/2 x 20 1/2 Cities Service Gas pricer
- Qty (10), 28 1/2 Mohawk tires green SSP building letters
- 46 1/2 x 34 1/2 Hunter Alignment SST
- 42 1/4 x 48 Suffolk Sheep sign
- 45 x 50 IGA DSP, in original bracket
- Qty (11), N.O.S. 56 x 32 SST Monroe shocks in original crate
- 66" dia. DSP Gulf Dealer, circa 1950 in original ring (pictured in custom crate, will be removed from crate for preview/auction)
- 24 x 24 DST Perfect circle pistons w/original bracket
- 25 1/2 x 22 3/4 DSP Coke fountain with original porcelain green bracket, circa 1935
- 42" dia. SSP Texaco (rough)
- 30 1/4 dia. Pepsi bottle cap SST
- 38" x 10' Pure gas pole banner
- 72 x 18 Lee Tires SST wood frame embossed
- 12 X 18 SSP No Smoking
- 6 x 16 visitor parking SSP
- 28 x 12 Team SST embossed (rough)
- 24" dia. Rupp dealer sign
- 12" x 8'3" SSP Cities Service
- 21" x 10" SST embossed Star Brand Shoes countertop display
- 1940's 33 3/4 x 16 3/4 SST embossed Gates Vulco rope drives

