

SATURDAY MAY 4, 2024
BEGINNING AT 9:30 A.M.



AUCTIONEERS:



DAVID THORNHILL
Troy, MO



DUSTY THORNHILL
Troy, MO



BILL UNSELL
Frankford, MO



On any item purchased through our auctions, we are not experts on description or authenticity of item, buyers, it is your decision to purchase item as it appears day of auction.

Troy Office: 636-366-4206.
For Full Listing, visit
www.thornhillauction.com



Lunch will be served. All buyers will be photographed. Terms: Cash or Good Check with Current Photo I.D. Out of State Photo I.D.s and Out of State Checks must be accompanied with a Bank Letter of Credit, call for details. We do not accept Cashier Checks. Items sold with no warranty. They stand sold AS IS. Owner & Auctioneer not responsible for accidents day of sale! Announcements made day of sale take precedence over any advertisement!

David Thornhill - 314-393-7241 Dusty Thornhill - 314-393-4726 Bill Unsell - 573-470-0037
 Troy Office: 636-366-4206 For full listing & terms of this auction - www.thornhillauction.com

THORNHILL
AUCTION
 & REAL ESTATE COMPANY

Having sold our farm & relocating we will sell the following at Public Auction on:
SATURDAY MAY 4, 2024
BEGINNING AT 9:30 A.M.

SALE SITE: 6206 South Hwy 94; St. Charles, MO 63304 (Weldon Springs)
 DIRECTIONS: : From I-70 & I-64E at Wentzville, MO take I-64 9.5 miles to exit #9 towards MO K & O'Fallon/94 St. Charles Defiance onto south outer road. Go approx. 1 mile to left on S. Hwy 94 & go 1/2 mile to farm on right (next to Emmanuel United Church of Christ).
 Note: Plenty of field parking, trailers OK



OWNERS:
JANE & CJ VOGT

AUCTIONEERS NOTE: Mark your calendars, if you are looking for history back to the Bunding Weldon Spring Store area from the late 1870's, here it is. Jane believed in keeping anything that related back to the Bunding's or Siedentop Families, what an impressive collection. CJ was a machinist by trade, working at Boeing. He enjoyed his farm of 25 acres, doing his own hay. The tractors & equipment are as low hours as we've sold. This is a beautiful place with plenty of parking & shade. These types of sales bring back a lot of memories. See you at the sale. David, Dusty & Bill (Note: We will be selling in 2 rings so come prepared. Again, plenty of room for trailers.)

Celebrating 61 Years In Business

TRACTORS SELL AT 1:00 P.M. IN SECOND RING



2012 John Deere 5203 diesel tractor, wide front, open station w/canopy, same as new only 598 hours, bought new



Kubota L3130 diesel tractor GST sells with LA513 hydraulic front end loader, only 687 hours, same as new

EZ GO SELLS AT 12:00 NOON



Workhorse EZ Go 200 gas cart w/electric tilt bed, like new

ANTIQUe FARM PRIMITIVES



2 man saw



Large brass 30 gallon kettle

- 2 Cast iron kettles, 1 w/stand
- 6 Lighting rods; most w/glass balls
- Small dinner bell & yoke
- Spring wagon seat
- Ideal water pump
- 2, 50 gallon wooden barrels
- Buggy lights
- Ladles, strainers, dippers for kettles
- Lot implement iron wheels
- Galvanized water sprinkle cans
- License plates – 1 set 1920's, 1 set 1930's, 1928 & 1938
- 2 Wooden benches approx. 150 years old from the original log home
- 2 piece barn loft lumber approx. 24" wide by 12' & 14' long

- Horse drawn plow
- Barn lantern
- Galvanized wash tubs
- Cream can
- Sickle grinder
- Implement seats
- Hand augers
- Hames, single trees
- Barn pullies
- Wrenches
- Jacks
- Corn knife
- Wooden kegs

HAY & FARM EQUIPMENT SELL AFTER TRACTORS IN SECOND RING



John Deere #336 twine hay baler, extra clean



Vicon Extra 122 7'8" 3 pt. disc mower, bought new 3 yrs. old, less than 100 acres, same as new



John Deere #64 side delivery hay rake w/dolly wheel



Squealer SQ 720, 3 pt., 6 ft., H/D brush hog, like new

- ARPS 6 ft., 3 pt, adjustable blade
- 3 pt. post hole digger w/6", 9" & 12" augers
- Antique Sulky hay rake, iron wheel

- PTO Type 2 basket tedder
- Square bale slider

- 2, 7'x16' hay wagons
- 1 section drag harrow

LAWN, GARDEN & FARM SUPPLIES IN SECOND RING

- 225 Grasshopper Zero-Turn lawn mower w/60" cut bought new (new 20hp. gas engine in 2023)
- 10 hp. Snapper power ride lawn mower, 28" cut, high vac w/vacuum & Snapper thatcherizer, like new
- John Deere #524 garden tiller
- 2 wheel dump yard cart
- Homelite #150 chain saw
- Stihl 2 cycle trimmer
- Antique Dunlap 16" rotary mower
- Craftsman 12 volt, 25 gallon sprayer
- Fence pliers
- Radio easy dumper 2 wheel trailer
- Hand grass seeder
- Iron wheel garden plow
- 100 T post
- 16' farm gate
- Yard machine 20" lawn mower
- Mole traps
- Tow straps
- Aluminum scoop shovel
- Roll barbed wire
- JD lawn sprinkler tractor
- Werner step ladders
- Lot garden hoses
- Shovels, forks, tamps, mauls & axes
- Gas cans
- Concrete water fountain
- Martin house & bird houses
- Log chains
- Car ramps

HOUSEHOLD & MISC.

- Kenmore apartment size refrigerator, like new
- Lazy Boy swivel rocker recliner
- Ethan Allen 3 cushion sofa
- Lazy Boy 3 cushion high back sofa
- Bradington-Young platform swivel rocker
- Recliner loveseat
- LG flat screen TV
- Sony stereo & speakers
- Singer sewing machine w/cabinet & stool
- Retro 3 piece marble top end table, coffee table set
- 1960's Flex steel 3 cushion sofa

- Oval & area floor rugs
- Tappan microwave
- Ping Pong table
- 2 door metal locker
- 3 Kenwood electric heaters
- Rock Chucker combo
- 8 ft. picnic table, like new
- 4 drawer chest of drawers
- 1950's card table & chairs
- Large partial roll carpet

- Set bookcases
- Coleman lantern
- Lot flower pots
- Golf clubs
- Kitchen utensils
- Corn hole game
- Washer game
- Fans
- Canister set
- Corning ware
- Quilt frame

GLASSWARE



Vaseline glass w/gold band, berry bowl set, cruet, sugar, cake plate, etc.

- Set Alfred Meakin Greenville England china w/serving piece
- Carnival glass bowls, creamer
- Bavaria gold inlay tray
- Set rose china
- Hand painted chicken plate
- Fenton glass
- Green Depression bowl
- 1950's oven set dishes
- Mustache cups
- Lot hand painted plates
- Early American – sugar & creamer
- Cups & saucers
- Hens on nest
- P.S. Austria server
- Dresser dishes
- Lot stemware
- Leaded glass
- Chocolate pot
- Partial list



Miss America Pink Depression – plates, bowls, candy, serving piece, etc.

VINTAGE CLOTHING

- 1800's Vintage cape & clothes
- 1875-1880 Vintage ladies hats (Bunding side)
- Lot 1800's Vintage clothes
- Child's high top boots
- Doll clothes, dresses, raincoat & umbrella
- Child's dresses
- Gloves, scarfs
- Furs
- Purses
- Partial list

COMPLETE SET 1950's KITCHEN CABINETS



ANTIQUES & COLLECTABLES

FROM THE WELDON SPRINGS BUNDING, POSTMASTER, GENERAL MERCHANDISE STORE EST. IN 1872



National Specialty stenciled small store type coffee grinder



Wooden sugar barrels, F. Bunding



Store Santa full size cardboard standup, The Palmolive Peet Co., WJR 1926



J.P. Coats - For Hand & machine 2 drawer spool cabinet



Fred Bunding advertising 1909 & 1910-1914 calendars



Lot Fred Bunding general store advertising



1912 Fred Bunding general merchandise Weldon Springs advertising calendar



1910 Fred Bunding Dealer in general merchandise Weldon Springs advertising

- Dad's cookie store jar
- 1940's gift books & toys, Blackwell Wielandy, St. Louis
- Compliments of Chas. F. Bunding, advertising
- Chas. F. Bunding & Son Putnam Fadeless Dyes advertising fan
- Sugar wooden barrel sugar top
- Muschany Bros. Howell, MO 1927 advertising platter
- 1909 St. Louis advertising plate
- 1900 Recreation The Majors Curling Yarn
- John Deere #16 general catalog
- 1896 Jewelry catalog
- 1865 William Homann Saddlery Co. St. Louis catalog
- 1895 The Delineator Store catalog
- 1896 - 1 Christmas, 1 Mid Summer store catalog
- Lot post cards
- Keithly's O'Fallon advertising fans

EARLY BOOKS & BIBLES

- 1893 Family Bible German (Siententop Family)
- 1846 German Bible
- 1887 German Lessons
- 1881 Penmanship Social Educational
- 1946 Sears & Roebuck Christmas Catalog
- 1883 MO Edition Complete Geography
- Lot early German books
- Lot early German Bibles; 1885, etc.
- Partial list

POSTCARDS & SCRAPBOOKS

- 300-400 Postcards
- Several scrapbooks

20+ QUILTS

FULL SIZE NATIVITY SCENE

LOT COSTUME JEWELRY

POCKET KNIVES & BUTCHER KNIVES

SHOP & MACHINIST TOOLS IN SECOND RING

- Miller thunderbolt 225 welder
- Air power Wards portable air compressor
- Craftsman 2 ton roll around floor jack
- 15'x3'3" work bench
- Craftsman 10" table saw
- Craftsman miter saw
- Craftsman tabletop scroll saw
- Jack stands
- Drill doctor
- Torno clamp on wood lathe
- DuraCraft 3/4 hp. bench grinder
- Schauer 6 & 12 volt battery charger
- 2, machinist tool cabinets
- Craftsman reciprocating saw
- Lot machinist tool bits
- Large lot drill bits, 2 Huot complete sets
- Lot machinist tools - tools bars, indicators, radius gauges, hole gauges, micro-height gauges, inside mics, etc.



Craftsman laser trac, 1 hp. floor model drill press

- Lot wrenches
- 4" vice
- Toolboxes
- Lot end mills
- Ryobi 18V drill
- Draw knives
- Stanley planes, 1 #5
- Sunbeam drill
- Lot hammers
- Lot pipe & wood clamps
- Pipe wrenches
- Lot extension cords
- Walkboard
- LP shop heater
- Lot nails, screws, hardware

MUSICAL



Grand Opry floor model Victrola, excellent condition, Burl walnut cabinet



German music box

- Lot records

PORTABLE SHEDS



10'x12' Portable (Red Barn) storage building

- 8'x8' Portable Morgan storage building

ANVIL



TRAILER

- 5'x10' single axle trailer w/ball hitch

FALSTAFF BEER ADVERTISING



Falstaff beer clock



Falstaff fishing advertising

- Falstaff cooler

- Anheuser Busch Clydesdales, print in frame

LINENS, DOILIES, SCARVES, ETC.



Button collection

- Lot quilt tops
- Chenille bedspread
- Lot pillowcases
- Lot doilies
- Lot tablecloths
- Canoe pin cushion
- Patterns
- St. Louis Blues & St. Louis Cardinal jacket & shirt
- Lot sewing supplies
- Quilt blocks
- Early lace curtains
- Vintage needle work
- Partial list

ANTIQUES & COLLECTABLES



Walnut white marble top dresser & matching washstand, beautiful set



Walnut white marble top dresser w/mirror



Brass bed



Round oak dining room table w/leaves



Oak kitchen cabinet, glass doors, nice



Oak washstand



Hull 2 handle vase



Rod iron single bed



Roll top Hoosier cabinet

- Walnut parlor table
- Glass & ball foot turn legged lamp table
- 6 Oak pressed back kitchen chairs (Bunding Family)
- 4 Oak pressed & spindle back chairs w/slat backs (Siedentop Family)
- Bentwood arm Lincoln rocker w/cane seat & back
- Drop leaf oak round table & 6 chairs (tavern type)
- Rocker

- Primitive approx. 6' painted table
- 1950's Blonde oak cedar chest
- 2 Walnut Rose Back cane bottom chairs
- 1950's Living room chairs
- Child's chair
- Oak lamp table
- 1930's Cedar chest
- 1950's Kitchen table & chairs
- 2 door 1950's cabinet
- Wall mount 7 bin cabinet
- Slat back chairs
- Sunny Highland, L. Muninger print in frame
- E. E. Southern Iron Co. St. Louis, advertising box
- Raedeke "Changing Season," 1 signed DU Print



Blue Ribbon 5 gallon 2 handle crock jar



Glass eye buggy lap robe (St. Bernard)

- White & red porcelain
- Salt crock in blue
- Tins
- Ironstone water & pitcher bowl
- Oil lamps
- Copper tea kettle
- 1928 Bookends
- Lot pictures & frames
- Carnival canes, 1 dice, 1 claw foot
- Concertone accordion, early piece
- Wall corner shelves
- 1950's Luggage
- Retro magazine rack
- Granite cooker & coffee pot
- Food molds
- Set car horns
- Ammo box
- Hwy 40-61 & stop signs
- American Eagle sled
- Cast iron tea kettle
- Split hickory baskets
- 3 gallon 2 handle brown crock jar
- Horse & Farm scene, print in frame

- Crock bowls
- Set flatware
- Checker game board
- Keen Kutter grinder
- 3 gallon Western crock
- 2 handle spun jar
- High chair
- Horse hame mirror set
- Tan deer hide & antlers
- Celluloid dresser box
- Celluloid coats & cuff box
- Old Judge coffee jar
- 4 quart butter churn
- Shapleigh washboard
- Crystal water bottle
- Lot bottles
- Lot blue jars & zinc lids
- 2, N.O.S. kerosene heaters
- 1950's playpen
- Toy box
- MG steering wheel
- Percolator



Wall bracket oil lamps



2 Floor lamps



Copper bed warmer



Parlor lamp

- Lot birds, dogs, chickens, figurines, etc.
- Girl & St. Bernard print & frame
- Union Station paper weight
- J. Zeisler, St. Charles Bottle
- Lot advertising medicine bottles
- German sweet chocolate wooden box
- Gray Graniteware, funnels, ladles, etc.
- St. Charles Dairy milk bottle
- Keen Kutter knife sharpener
- Keen Kutter box cutter
- Lot golf trophies
- Apple peeler
- Brass school bell
- Store ring gauge
- Lot Bitter bottles
- Lot Christmas décor
- Sad irons
- Painted stool
- Partial list



Splatterware crock bowl

DOLLS & TOYS



Early bride dolls



Early doll w/glass eyes

- Doll dresser
- Lincoln log set
- Erector set
- Mickey Mouse watch
- Toy tin hen w/eggs
- Lot children's books
- Pencil box
- Texan Jr. handgun
- Misc. toys



Lot dolls

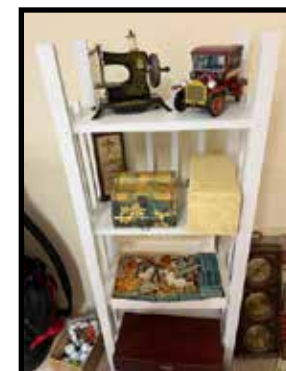


Porcelain doll heads

- Child's Kourt King croquet set in box
- 1950's stuffed bear
- Nintendo games
- Yard dart game
- Tin windup toy
- Farm animal display
- Repo wagon & horse set
- Child's ironing board & iron
- Lot tin noise makers



Perfection child's cast iron cook stove



Lindstrom child's sewing machine