

**PEDAL TRACTORS & CARS SELL AT 11:00 A.M.**



Model T pedal car



Convert-O tricycle  
(Never seen one)



Pedal tractor

- Ford 8730 pedal tractor
- John Deere 9870 STS pedal tractor
- New Holland pedal tractor, pink
- John Deere Bike



Pedal car

- Child's wagon
- Pedal fire truck
- Sleds

**DOLLS**



Original Shirley Temple w/box



China head dolls  
(her parents' dolls)

**TOYS SCALE MODEL TRACTORS & TRUCKS SELL AFTER PEDAL TRACTORS**



Early 1940s tin cars, trucks, etc



Snoopy pull toy



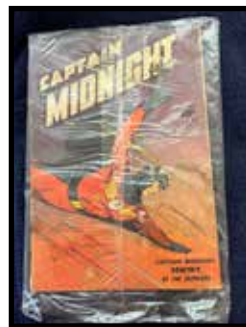
IH tractors

- Musical duck
- Bones jointed dog
- Tyco Grave Digger toy, in box
- Rd Builders crank track hoe
- Lot toy tractors; Ford, John Deere, AC
- Ertl toys
- Scale model planes, trucks, banks
- AC 440, in box
- Fisher Price toys
- Lot story books & coloring books
- Lot puzzles
- Oil tanker
- Shirley Temple coloring books
- Mr. Peanut baby
- Little Orphan Annie toy cookstove
- Partial list

Approx. 45 minutes of Toys



Jolly Bear w/box



Captain Midnight;  
Sentry of the  
Skyways #47 Dec.  
10¢ comic book

**THORNHILL AUCTION**  
& REAL ESTATE COMPANY

We will sell the following personal property of the Late Mary Jo Broyles at Public Auction on:  
**SATURDAY OCTOBER 25, 2025**  
**BEGINNING AT 9:30 A.M.**

SALE SITE: 4155 Hwy C; Moscow Mills, MO 63362  
DIRECTIONS: Take Hwy 61 to Moscow Mills Hwy C Exit, go east on Hwy C approx. 3 miles to farm on left #4155 homestead at end of lane. From Hwy 79 & Old Monroe go west on Hwy C approx. 7 miles to farm on right #4155.



**OWNER:**  
**LATE MARY JO (EDDIE) BROYLES**

AUCTIONEERS NOTE: Mary Jo was 95, Eddie & Mary Jo were married in 1948. This was the Maggie Leitman farm, Mary Jo was the 3rd generation Leitman to live on this Century Farm. She lived a long & full life. She was a homemaker & active 4H leader. Everything is very neat & clean but full. See you at the sale. David, Dusty & Bill  
NOTE: We will be selling in two rings, bring a buddy. Beautiful family farm. Plenty of field parking.

**AUCTIONEERS:**



DAVID THORNHILL  
Troy, MO



DUSTY THORNHILL  
Troy, MO



BILL UNSELL  
Frankford, MO



On any item purchased through our auctions, we are not experts on description or authenticity of item, buyers, it is your decision to purchase item as it appears day of auction.

**Troy Office: 636-366-4206.**  
**For Full Listing, visit**  
**www.thornhillauction.com**



Lunch will be served. All buyers will be photographed. Terms: Cash or Good Check with Current Photo I.D. Out of State Photo I.D.s and Out of State Checks must be accompanied with a Bank Letter of Credit, call for details. We do not accept Cashier Checks. Items sold with no warranty. They stand sold AS IS. Owner & Auction personnel not responsible for accidents day of sale! Announcements made day of sale take precedence over any advertisement!  
David Thornhill - 314-393-7241 Dusty Thornhill - 314-393-4726 Bill Unsell - 573-470-0037  
Troy Office: 636-366-4206 For full listing & terms of this auction - www.thornhillauction.com

*Celebrating 62 Years In Business*

**TRACTORS & FARM EQUIPMENT**

**SELL AT 1:00 P.M. 2ND RING  
(SKID LOADER DAY OF SALE TO LOAD OUT)**



*1953 Allis Chalmers WD45 wide front end, snap coupler hitch, runs good*



*1953 Allis Chalmers WD45 tri front end, runs good*



*7'x14' flatbed farm wagon w/rail sides, good wagon*



*Farm King 72", 3 pt. rear discharge finish mower*

- Land Pride 3 pt. 5' finish mower
- AC coupler hitch 3 bottom plow
- Brillion 8' pull type roller, cultipacker
- Dearborn 3 pt. 2 bottom plow
- 3 pt. 6 ft. adjustable blade
- 3 pt. 2 row field cultivator
- Dan Hauser 3 pt. post hole digger
- Trip bucket loader, fits WD45
- David Bradley wagon running gear
- AC 1 row, 3 pt. planter (Homemade)

- 3 pt. 6 ft. brush hog
- 3 pt. 5 ft. disk
- AC 4 row corn planter
- AC 2 row cultivator
- Skid
- 2 pickup bed trailers; 1 IH
- Misc. AC parts
- Set 18.4-38 clamp on duals
- 1 section harrow
- Tractor tire chains

**FARM SUPPLIES**

- 150 used T Post
- 250 gallon plastic water tank
- 2 new green farm gates; 4' & 6'
- CO-OP hot spark electric fencer
- Log chains
- Sway bars
- Come along
- Chicken wire
- Barbed wire
- Woven wire
- Spool rope
- Baling wire
- Pitch forks
- Scoop shovels
- 2 wheel dolly
- 50 gallon barrel w/pump
- 500 gallon fuel tank & stand
- Misc. barn tin

**SHOP TOOLS**

- Lincoln 225 amp welder
- Coleman Pulse 1850 generator
- Portable generator
- Craftsman table saw
- 12v air compressor
- 15 sections; 24"x30" shelving
- Portable air tank
- Bolt cutters
- Hammers, hatchets
- Lot wrenches, tools
- Very Partial list

**GOOD BIG HORN TYPE FULL SIZE WESTERN SADDLE**

**SELLS AT 12:00 NOON**

**HOMEMADE TRAILER TYPE BBQ GRILL**

**PORTABLE STORAGE SHEDS**

**SELL AT 12:00 NOON**



*8'x12' portable barn type storage building w/electric (Diamond Built), good building*



*12'x16' portable building on skids w/rollup door, nice building*

**LAWN & GARDEN**



*Land Pride Accu Z, Zero-turn 25hp., 6' cut, gas lawn mower, bought new*



*Snapper SR1030, 10hp., 30" cut riding lawn mower, runs good*



*Troy Bilt Pony rear tine tiller*

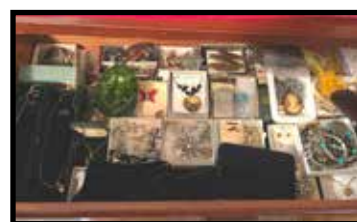
- Mini cultivator
- Homelite chainsaw
- Lawn Boy push mower
- 18hp. B & S motor
- Werner step ladder

- Comet Snapper riding lawn mower, AS IS
- 2 Husqvarna chainsaws; #350 & #136
- Husqvarna 125B 2 cycle blower
- Earthway garden planter
- Wooden extension ladders
- Wheelbarrow
- Live traps
- Shovels, rakes, forks, hoes, axes, sharp shooter, etc.
- Firewood ring rack
- 2 wheel yard trailer
- 2 iron wheel garden plows

**ARROWHEADS (11)  
SELL AT 10:00 A.M.**



**LOT COSTUME JEWELRY**



**LARGE COLLECTION TUPPERWARE, SOME VINTAGE**



*Oak S type rolltop desk*

**ANTIQUES, COLLECTABLES & FARM PRIMITIVES**



*Quilts*



*Bundy trombone w/case*



*Brown Mercantile Co. Ethlyn, MO 1928 Advertising bowl*

- Advertising Thermometer; Old Monroe Elevator, Standard Shell & Oil
- 10+ piece cast iron; 1 Griswold #7 & Dutch oven, skillet, muffin
- Advertising Fans; O'Garlan Ricks Winfield, MO
- Advertising New Quik-Heat-Oil Burners
- Trunks; camel back, flat top, shipping trunks
- Dr. W.B. Caldwell's Monticello ILL. bottle
- St. Louis Dairy cream top milk bottle
- Aprons, scarf, needlework, pot holders
- Tucker Corp Class A Common Stock
- Walnut 3 draw marble top chest
- 5 drawer oak chest of drawers
- Spinning wheel (Family piece)
- Copper apple butter kettle & stand
- Monmouth pottery crock
- Lot crock jugs & jars; 1 blue band
- Antique blue jars, some dated
- Grey granite lunch buckets
- Wall mount comb & brush holder
- Paragon treadle sewing machine
- Universal counter scale
- Advertising yard sticks
- 1950s Frigidaire refrigerator
- Mar Crest pots & pans
- Doll baby bed, high back
- Set Old Hickory butcher knives
- Shapleigh knife sharpener
- St. Charles Dairy bottle
- Pevely cottage cheese bottle
- Horse tack, harness, saddles
- Wooden handle flatware
- Millie-Willie Salt & Pepper
- 1950s kitchen utility cabinet
- Henry Depping Attorney General, political advertising
- Aydelotts Men's Shop Troy, MO mans hat & box
- 2 Quartz Regulator wall clocks
- Oak washstand
- Oak lamp table
- Piano stool
- Youth chair
- Cow bells
- Lot clock parts
- Smoke stand
- S & K 8" skillet
- Washboard
- Kodak Duaflex II
- Lot cameras
- Watch bob
- 2 wizard fans
- Lot early books
- Fold up ruler
- Hanging scale
- Match boxes
- 2 well pumps
- Pipe stand
- Meat cleaver
- Model T light
- Oil lamps
- Retro lamps
- Rag rugs
- Oak wall telephone
- 10 & 15 gallon crocks
- Bentwood arm rocker
- Swan hood ornament
- Pictures & frames
- Lodge cast ash tray
- Winchester flashlight
- The Coca-Cola ruler
- 5 gallon gas cans
- Metal lawn chairs
- 1 man & 2 man saws
- Model T windshield
- Lot Pink Depression
- Lot Green Depression
- Hobnail opalescent
- Advertising; AG, Morton
- Cast implement seats



*Oak store cabinet (Brown Mercantile Ethlyn piece)*



*Vess salt & pepper*

- Lot clear Depression glass
- Crock bowls, most colors
- Wheat pattern butter mold
- Shirley Temple creamer
- Galvanized washtubs
- MF 2 wheel hog oiler
- Pedal grind stone
- Lot stoneware
- Lot graniteware
- Serving piece
- Set 8 retro kitchen chairs
- Stoneware pitchers
- 1950s glassware
- Lighters; Camel, etc.
- Pocket knives
- 4 qt. butter churn
- Hens on Nest
- Hull Pottery
- Old Thresher pins
- IH & JD straw hats
- Vintage ladies hats
- Chalk figurals
- Coffee tins
- Green Jadeite
- Lot Pyrex
- Rolling pins
- Coffee jars
- Blondie thermos
- Wooden ladles
- Flour sifter
- Tinware glasses
- Salt & Pepper
- Wooden bowl
- Partial list, cabinets are full

**HOUSEHOLD & MISC.**



*Whirlpool upright deep freeze large box, nice & Kenmore 90 series auto washer & matching LP gas dryer, white, nice*

- Kenmore 2 door refrigerator/freezer w/water & ice dispenser
- Whirlpool LP gas cookstove, 4 burner, white, nice
- Kenmore 2 door refrigerator/freezer
- Kenmore 23 chest type deep freeze
- Kenmore upright deep freeze
- 3 Vizio flatscreen TVs
- Handmade microwave cabinet
- Solid oak entertainment center
- Lot chest of drawers (5 drawer)
- Hamilton beach crockpot
- Lot pots, pans, bakeware
- Lot sewing supplies
- Under cabinet radio
- Power heater Duraflame
- Panasonic 1100w high power microwave
- Kitchen table
- Bookcase
- Sleeper sofa
- Full size bed
- Library table
- Bar stools
- Child's bench

- Deep fryer
- Broilers
- Picnic basket
- Corning ware
- Totes material
- Porch swing
- Fish fryer
- Bird houses
- Fans
- Heaters
- Lot bedding
- Sewing machine
- Lot crafts
- Sunbeam mixer
- Lot flatware
- Rocker recliner
- Lot cookie sheets
- Living room chairs
- End & side tables
- Lot garden pots
- Blackstone grill
- Card tables & chairs
- Hand meat saw
- Buddy heater
- Large lot Christmas
- Large lot glassware
- Sky 2954 keyboard
- Lot butcher knives
- Lot kitchen appliances
- Lot canning jars