

WEDNESDAY JULY 22, 2026

BEGINNING AT 9:30 A.M.

SALE SITE: 794 Linns Mill Road; Troy, MO 63379

DIRECTIONS: From Hwy 61 & 47 at Troy, MO, go west on Hwy 47 4.6 miles to left on Linns Mill Rd, go 1.4 miles to right on Linns Mill Rd. & go 0.9 miles to farm on left. #794

HOUSEHOLD & MISC.



Cast patio bench & chair

- Wire mesh patio furniture
- Handicap walker
- Ice cream maker
- Partial list

ANTIQUES & COLLECTABLES

- 5 sets ice tongs
- Block pulleys; wood & cast iron
- Galvanized buckets
- Breast drills
- Single trees
- Milk crates
- Wooden boxes
- Lot blue quart jars
- Draw knife
- Meat grinder

CANNING SUPPLIES

- Approx. 18 cases quart Kerr canning jars
- Lot canning supplies

OWNER:

KENNETH & JOANN VESTAL

AUCTIONEERS:



DAVID THORNHILL
Troy, MO



DUSTY THORNHILL
Troy, MO



BILL UNSELL
Frankford, MO



On any item purchased through our auctions, we are not experts on description or authenticity of item, buyers, it is your decision to purchase item as it appears day of auction.

Troy Office: 636-366-4206.

For Full Listing, visit
www.thornhillauction.com



Lunch will be served. All buyers will be photographed. Terms: Cash or Good Check with Current Photo I.D. Out of State Photo I.D.s and Out of State Checks must be accompanied with a Bank Letter of Credit, call for details. We do not accept Cashier Checks. Items sold with no warranty. They stand sold AS IS. Owner & Auction personnel not responsible for accidents day of sale! Announcements made day of sale take precedence over any advertisement!
David Thornhill - 314-393-7241 Dusty Thornhill - 314-393-4726 Bill Unsell - 573-470-0037
Troy Office: 636-366-4206 For full listing & terms of this auction - www.thornhillauction.com

THORNHILL AUCTION

63rd YEAR IN BUSINESS

& REAL ESTATE COMPANY

Due to our health, we are selling our farm & will sell the following at Public Auction on:

WEDNESDAY JULY 22, 2026

BEGINNING AT 9:30 A.M.

SALE SITE: 794 Linns Mill Road; Troy, MO 63379

DIRECTIONS: From Hwy 61 & 47 at Troy, MO, go west on Hwy 47 4.6 miles to left on Linns Mill Rd, go 1.4 miles to right on Linns Mill Rd. & go 0.9 miles to farm on left. #794



OWNER:

KENNETH & JOANN VESTAL

AUCTIONEERS NOTE: Kenneth & JoAnn have made the hard decision that it's time to move closer to town. They've shared 65 years of marriage & lived on the farm for 40 years. Kenneth retired from McDonald Douglas after 37 1/2 years. His shop is full, everything is very neat & clean. See you at the sale, David, Dusty & Bill.
Note: Plenty of shade with field parking

Celebrating 63 Years In Business

TRACTOR, CHUCK WAGON & 4 WHEELER SELLS AT 12:00 NOON



John Deere 400 gas tractor (yellow), wide front end, Hi low trans, 3 pt., PTO, power steering, with canopy, shows 1,018 hours



Chuck Wagon 340cc, 11 hp gas powered by Honda, positive traction w/manual dump bed, bought new



Honda 300 4x4 4 wheeler, bought new, adult driven



Pro Tech 1000 m/m wood lathe, floor model w/accessories, 38", 4 speed, 7" height

SHOP & WOODWORKING TOOLS

- Oliver Quality wood lathe, approx. 18" bed
- Lot wood lathe tools
- Magna Force Sanborn 4 hp. Portable air compressor
- Lincoln Pro Core 125 electric welder, same as new
- Craftsman 2/3 hp. Laser trac bench type drill press
- Craftsman toolboxes
- Craftsman 10" table saw, like new
- 3/4 drive socket set
- Craftsman power miter saw
- 2 Craftsman shop stools
- Craftsman 1/2" breaker bar
- 1.5 ton roll around floor jack
- Craftsman 16 gallon 5.25 hp. Shop vac
- B&D power caulk
- Adjustable worktable w/electric
- Lot C clamps, large & small
- Large lot screws, bolts, hardware & bins
- Chicago electric chainsaw sharpener
- Lot Craftsman sockets & ratchets
- Machinist vice
- Large lot machinist drill bits
- 6" bench grinder
- Lot bench vices
- Buffalo 5" bench grinder
- Tin snips
- Adjustable wrenches, channel locks, wire cutters, pliers, side cutters
- Speedway Series 3/4 hp. 8" 110V bench grinder
- Partial list; approx. 3 – 20' trailer loads of tools
- Large lot Craftsman open end & box end wrench sets
- Large number of his wrenches are Craftsman



Craftsman wrenches; 1 1/4", 1 1/8" & down, open end box wrenches

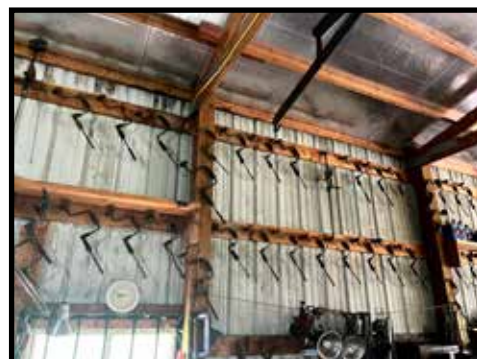
- Shop fan
- Lot toolboxes
- Lot screwdrivers
- Lot vices
- Levels
- Drop cords
- Lot wood clamps
- Lot grip clamps
- Chisels, punches
- Power hand tools
- Craftsman sawzall
- Lot crow bars
- Jack stands
- Utility carts
- Lot grinders
- B&D 5" bench grinder

TRAILER SELLS AT 12:00 NOON



66" w x 10' single axle trailer, ball hitch w/sides, winch & dump bed, with title

BRACE & BIT COLLECTION 200+



MONKEY WRENCH COLLECTION 30-40



PLANES (25+; STANLEY, SEARS, ACE, ETC.)



OIL CAN COLLECTION 75+



STIHL EQUIPMENT

- Stihl MS 360 Pro 18" chainsaw
- Stihl MS 170, 16" chainsaw
- Stihl MM 55 tiller w/2 tiller heads
- Stihl BG 50 blower

HAMMER COLLECTION – 200+

HATCHET COLLECTION – 25+

YARD & GARDEN TOOLS



LVS-33 Poly Vac system trailer type 9 hp. Leaf vac

- Scotts 3000 spreader
- Mesh type garden wagon
- Yard cart
- 22" Excalibur 2 cycle edger
- Solo backpack sprayer
- 4 pipe firewood racks

- Craftsman 17" rear tine tiller 900 series, 9 hp.
- Craftsman Edger, new in crate
- Wheelbarrow
- Lot large flower pots
- B&D edger
- Step ladders; 1-10' Louisville
- 12' fiberglass (Cuprum) step ladder
- 22' aluminum extension ladder
- Axes, shovels, forks, rakes, tamp, sharp shooter, brush cutter, limb saw, pruners
- Tarps
- Lot gas cans
- Garden hose & caddies
- Lot 2x4s & misc. lumber
- Lot extension cords
- Lot yard & garden tools

FARM SUPPLIES

- 3 ton chainsaw
- Lot log chains
- Lot load binders
- Lot clevises
- Lot Reese hitches & balls
- Wire stretchers
- Adjustable top links
- Tie downs
- Lot oil; 10W40, 15W40, etc.
- Wedges
- Log roller
- Oil spouts

PIPE WRENCH COLLECTION 75-100

FISHING - CAMPING

- Lot rods & reels
- 2 tackle boxes & tackle
- 5 coolers
- Coleman lantern
- Coleman cookstove